



## **Retail Solution**

LED High Bay | LED Strip | Troffer | Troffer Retroffer Kit | Flat Panel |  
Downlight | Wall Pack | Area Light | Post Top | Bollard

# START SAVING

Our comprehensive suite of lighting offerings include:

- 1 LED High Bay**
- 2 LED Strip**
- 3 LED Troffer/ LED Troffer Retrofit Kit/ LED Flat Panel**
- 4 LED Downlight**
- 5 LED Wall Pack**
- 6 LED Area Light / Post Top / Bollard**





## LED High Bay

1



LED UFO High Bay Light



LED MOON SERIES LOW BAY

## LED Strip

2



VISION LED Strip Light

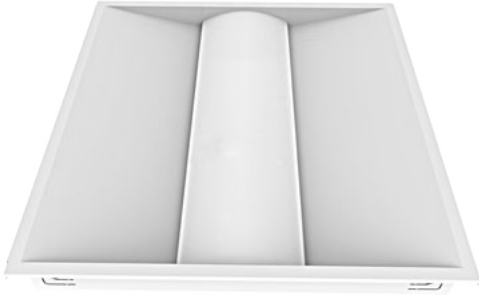


LED STD Strip



**LED Troffer / LED Flat Panel /  
LED Troffer Retrofit Kit**

**3**



DLC P LED Center Basket Troffer



LED Flat Panel



LED Troffer Retrofit Kit-DL 2x2



LED Troffer Retrofit Kit-DL 2x4

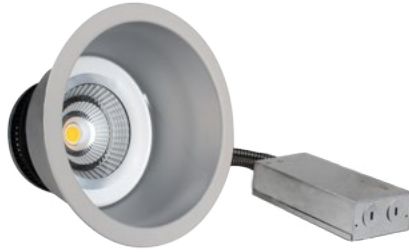






## LED Downlight

4



LED Commercial Downlight Retrofit Kit 6 inch & 8 inch



LED Commercial Downlight Retrofit Kit 4 inch



LED Commercial Downlight Retrofit Kit 5 inch



LED Commercial Downlight Retrofit Kit 6 inch



## LED Wall Pack

5



V-Line Wall Pack



Leopard Series Mini Wall Pack

## Security Light

5



LED TR Security Light



LED Security Light







**LED Area Light / Post Top / Bollard**

**6**



LED MOON SERIES POST TOP



PAVILION LED POST TOP



MT LED Area Light 100W  
150W 200W



SMT LED Area Light



SKY LIGHT



Standard LED Bollards

# SAVING **EXAMPLE**



## Energy Savings:

At \$0.10 per kWh, energy savings is estimated at \$90 per fixture, based on saving approximately 200 Watts per fixture for 12 hours per day. If your facility has 48 outdoor fixtures (conservative for many retail establishments), this annualized savings would be \$4,320.



## Maintenance Savings:

The average cost to maintain a typical outdoor fixture is \$100 (lamp cost + labor/trip charge). This does not factor in any inconveniences or service interruptions caused by unlit areas. Over the extended 100,000 space rated life of an LED fixture compared with an HID lamp, this saves approximately \$500 per fixture in labor.  $48 \text{ fixtures} \times \$500 = \$24,000$ .

**ABOVE ALL Lighting, Inc.**

**Add:** 1501 Industrial Way N. Toms River, NJ 08755

**Phone:** 866-222-8866

**Web:** [www.AboveAllLighting.com](http://www.AboveAllLighting.com)

©2019 ABOVE ALL all rights reserved