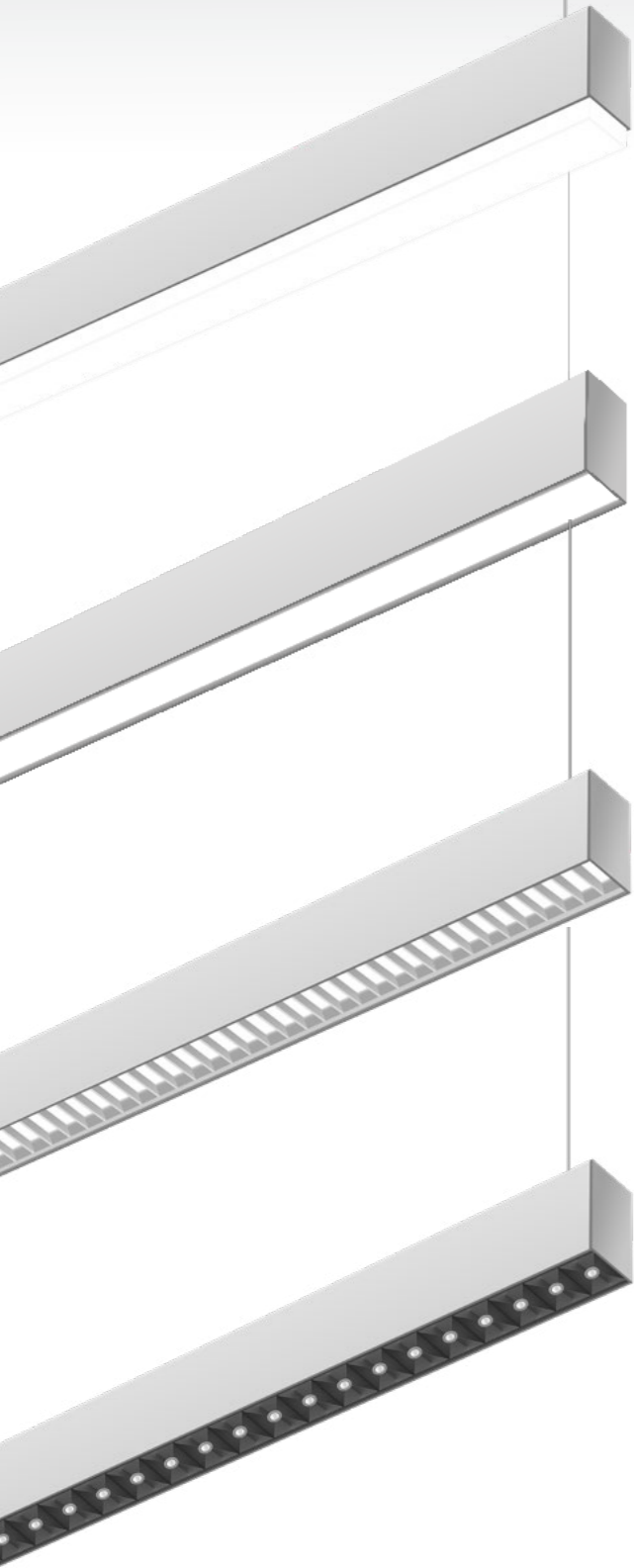




Pendant & Surface Fixtures

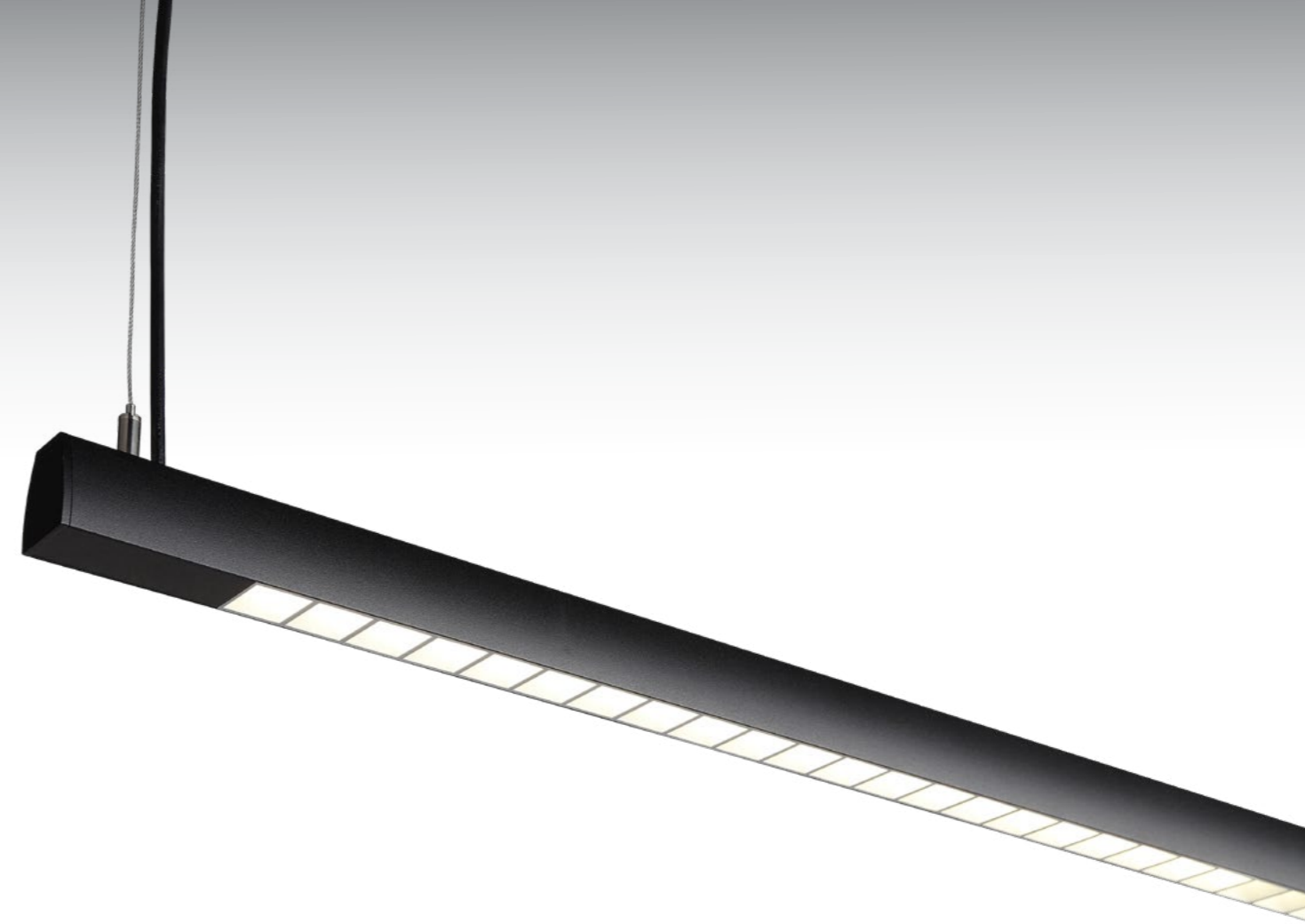
1501 Industrial Way N,
Toms River, NJ 08755
©2021 ABOVE ALL Lighting, Inc.
All rights reserved

866-222-8866
info@aboveallighting.com
www.AboveAllLighting.com



Magic Linear Series

- Comes in lengths of 2FT, 4FT, and 8FT.
- Direct and indirect available
- Available with several lit joiner accessories for unlimited lighting pattern design
- Flush diffused, louver, micro reflector and drop lens
- Surface, pendant and wall mount optional
- Microwave sensor and EBU are available



Art-Line Pendant Light

- Simple and sleek appearance
- Anti-glare louver lens
- Direct and indirect distributions
- UGR<19
- 0-10V Dimming



Cuboid Pendant Light

- Aluminum alloy body
- Diffused lens and louver lens
- Large and asymmetric small beam angles
- Deep anti-glare cup optics
- 0-10V Dimming

Canoe Pendant Light

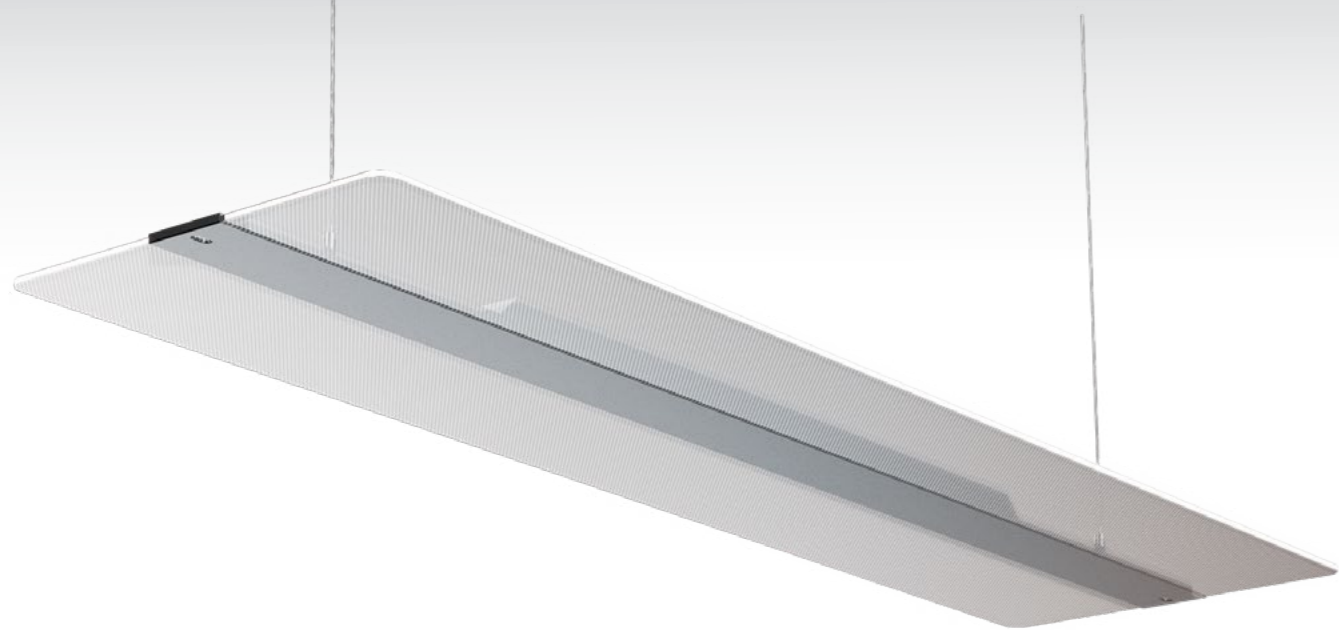
- A tasteful and charming appearance
- Three-dimensional arc design of the end
- Honeycomb lens
- UGR<19
- The lamp body is wrapped with cloth to achieve unique charm
- Various finish colors available





Corrugated Acoustic Light

- Corrugated surface design
- Sound absorbing polyester fiber materials adopted
- Deep anti-glare cup optics
- UGR<19
- Various finish colors available



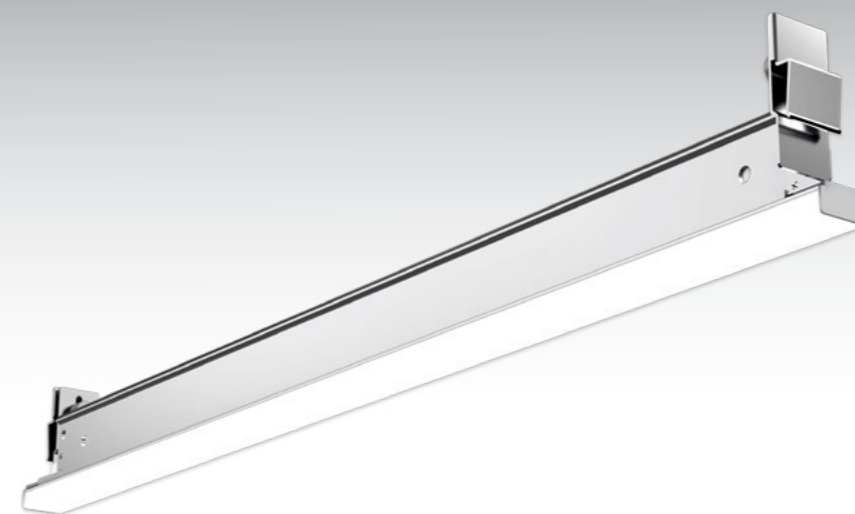
SOAR Pendant Light

- Mitsubishi light guide plates
- Sturdy and corrosion-resistant aerometal structure
- Elegant flashing wings appearance
- Direct and indirect distribution
- 0-10V Dimming



Wingsuit Pendant Light

- Wingsuit flying appearance
- Sound absorbing polyester fiber materials adopted
- Direct and indirect distribution
- UGR<19
- Various finish colors available



Integrate T-grid Linear

- Various standard 15/16" or 9/16" ceiling mount compatible
- Triple-side unique optic design
- Mounting brackets and led module are detachable
- Seamless continuous runs
- Flexible lighting patterns achievable
- RJ45 terminals for easy driver connection





FOCUS Round

- Fixtures in diameters from 13.8" through 47.2"
- Perfect glare control with UGR <19
- Edge-lit technology and non-yellowing optical PMMA
- Pendant, surface, and wall mounted
- Direct and indirect light distributions.



