

LED SECURITY LIGHT



PRODUCT DESCRIPTION

LED Security Light is the ideal for security entrance, stairways, and storage area. Integral Photocell is preinstalled for more efficient operation and energy savings. Available in 120V only.

FEATURE

- Intergrated photocell
- Uniform color consistency

ELECTRICAL SYSTEM

- Input Voltage: 120V
- 50/60Hz
- Minimum Ambient -40°C
- Power Factor: > 0.98 at full load
- Total Harmonic Distortion: < 20% at full load

PERFORMANCE

CRI

80+

CCT

3000K, 3500K, 4000K, 5000K

Projected Lifetime

L70 - 175,000 Hours

Working Temperature

-40-104°F (-40-40°C)

Certifications

- cETLus Listed
- IP65 rated
- DLC qualified
- RoHS compliant

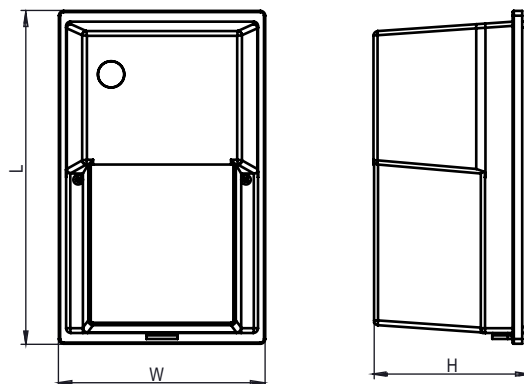
SPECIFICATION

Length: 10.9"

Width: 6.8"

Height: 5.2"

Max. Weight: 3.39 lbs



Ordering Information

Example: ABBSEC14504

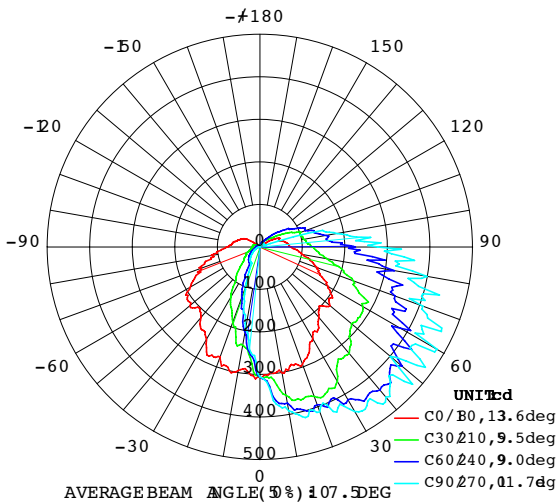
ABOVE ALL	Security Light	Watts	CCT	Voltage
ABB	SEC	14 - 14 Watts	30 - 3000K 35 - 3500K 40 - 4000K 50 - 5000K	4 - 120V

Notice:

* Standard Finish as Dark Bronze. Special Order as other finish color - Please Ask Customer Service for Details.

PHOTOMETRY

All published luminaire photometric testing performed to IESNA LM-79-08 standards by a NVLAP certified laboratory.



PERFORMANCE DATA

LUMEN OUTPUT

Lumen values are measured by third party certified laboratories performed in accordance with IESNA LM-79-08 as well as Lighting Facts listed.

Watts	Lumen Output	AC Input 120V	Measured Watts	CRI	CCT	LPW
13W	1296	0.13A	11.38W	>70	2972K	113.8

Lumen Ambient Temperature (LAT) Multipliers

Use these factors to determine relative lumen output for average ambient temperature from -40-104°F (-40-40°C)

Ambient		Multiplier
Celsius	Fahrenheit	
0	32	1.02
10	50	1.01
20	68	1.00
25	77	1.00
30	86	1.00
40	104	0.99

Projected LED Lumen Maintenance

Data references the extrapolated performance projections for the LED Security Light in a 77°F ambient, (tested per IESNA LM-80-08 and projected per IESNA TM-21-11).

Operating Hours	0	4,000	7,000	30,000	175,000
Lumen Maintenance Factor	1.0	0.98(L98)	0.96(L96)	0.92(L92)	0.70(L70)

Ref#: 10488-10924

System Wattage	Max THD (%)	Power Factor	Power Efficiency	Replaces/ Equiv.(MH)
13W	20	>0.98	90%	70W

BUG RATING

Model	BUG Rating
ABBSEC14504	B0-U3-G2

Warranty

Five year limited warranty. Full warranty terms located at www.aboveallLighting.com/warrantystatements

Note:

Specifications subject to change without notice.