



# **VISION** Strip Light

---



# ABOVE ALL

[www.AboveAllLighting.com](http://www.AboveAllLighting.com)



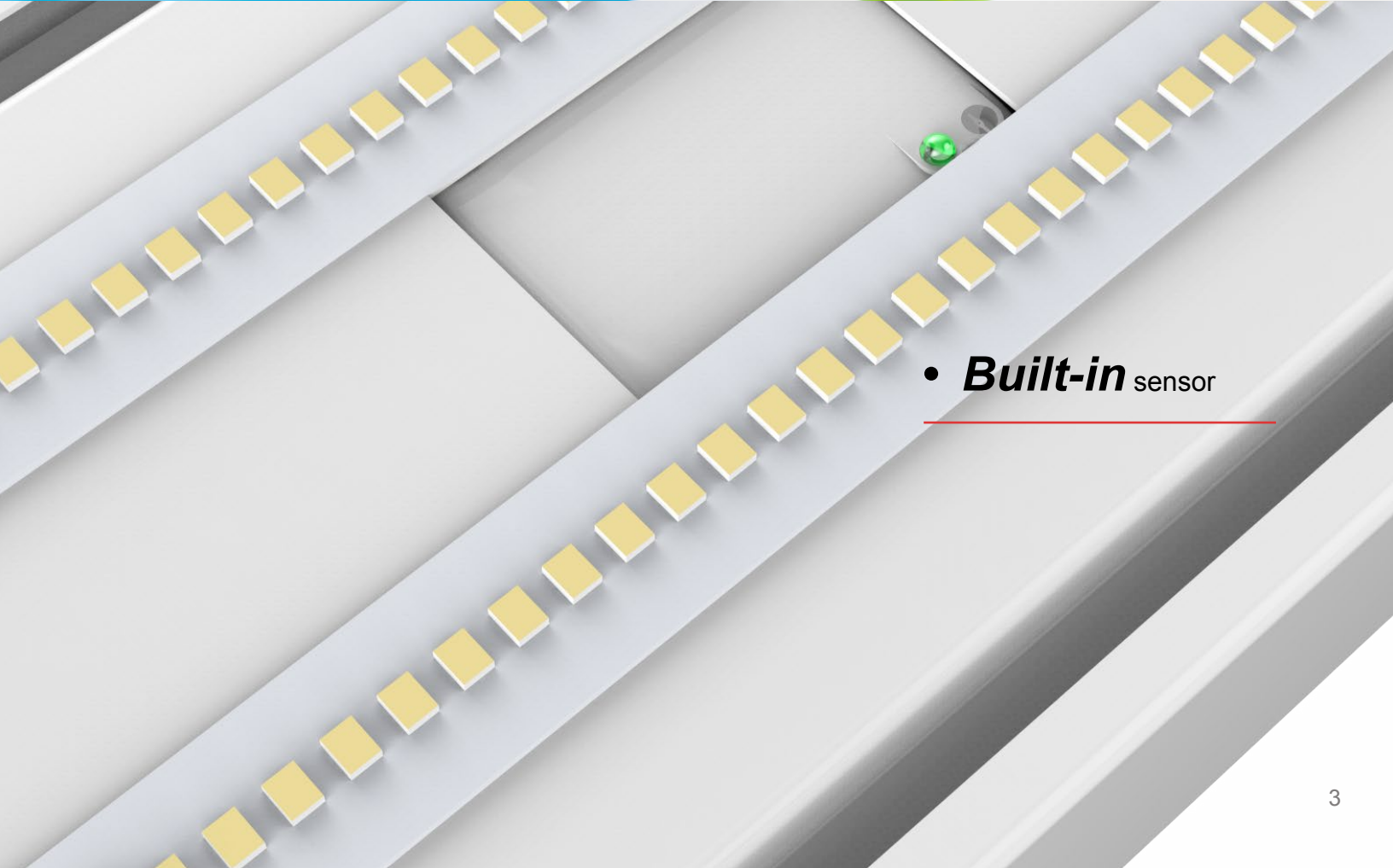
***Vision LED strip Light*** have a sleek design with diffuser lens. Optional accessories include, EBU and motion sensors. It can be used in stairwell, warehouse, office, garage, display shop and other commercial applications.

# FEATURE

- ***No glare***



- ***Built-in*** sensor

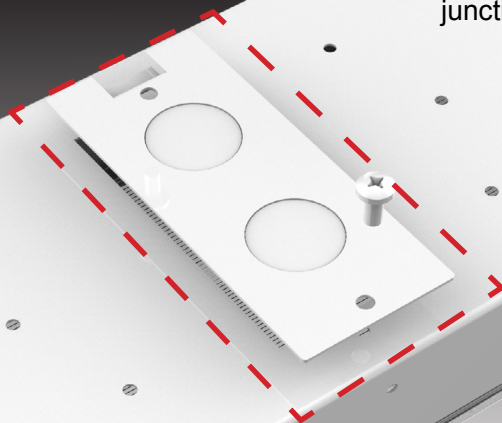




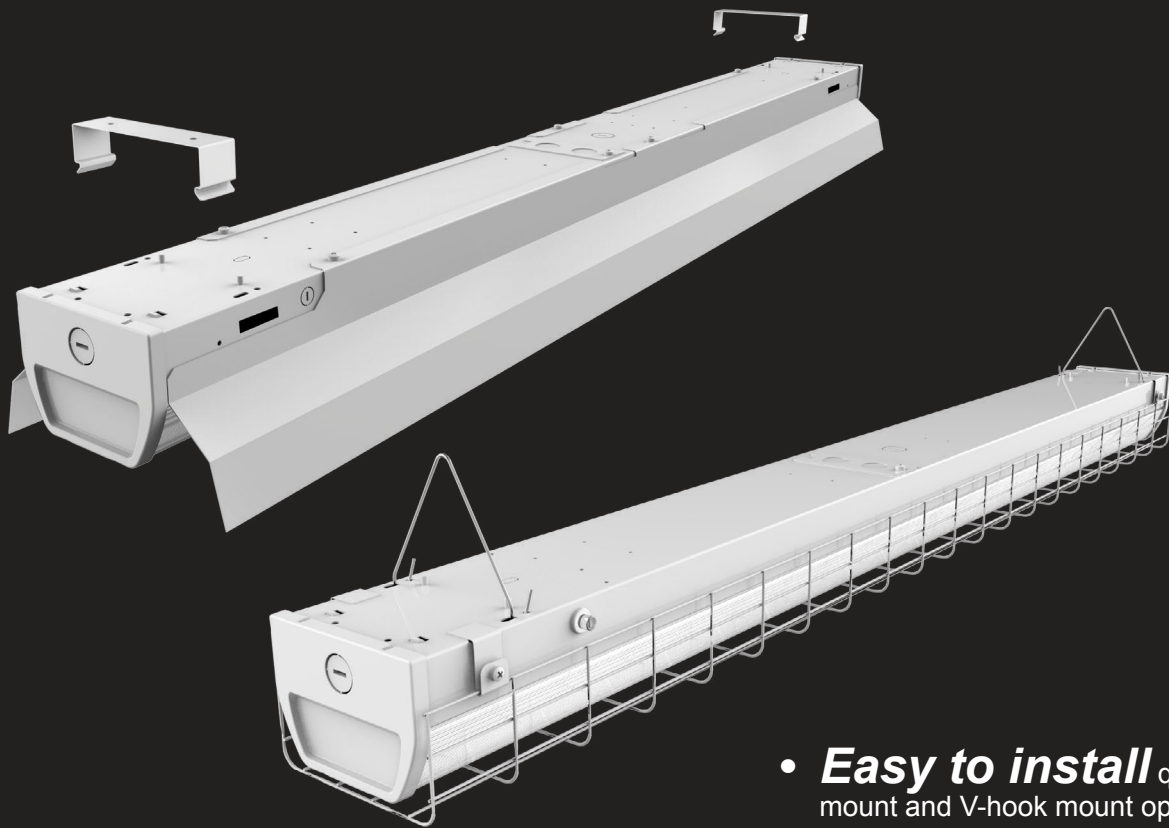
- ***EBU*** backup available



- ***Easy to wire*** end and back side wire entries available, meet different junction box locations.





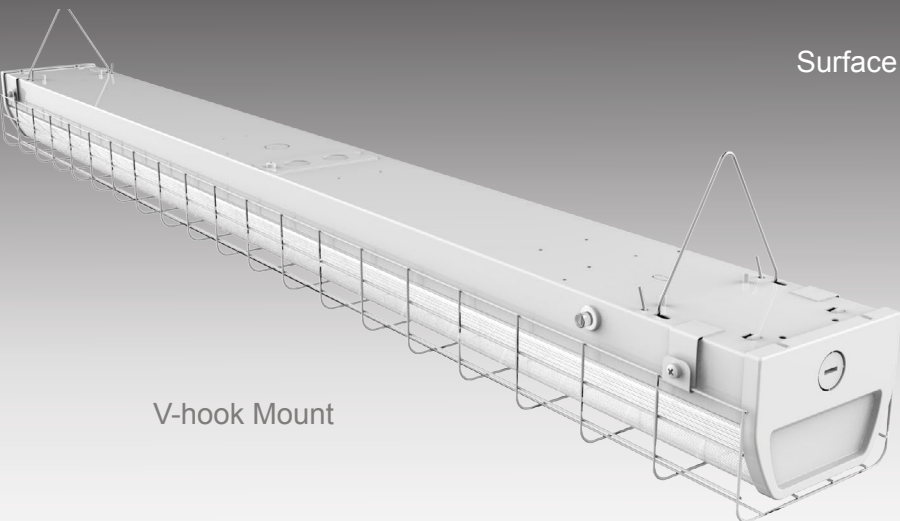


- ***Easy to install*** quick surface mount and V-hook mount optional, no need to open the housing.

## MOUNTING

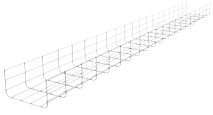


Surface Mount



V-hook Mount

## ACCESSORIES (ORDERED SEPARATELY)



**90237**

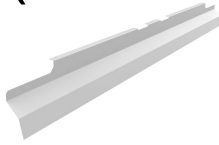
STRP06-WG

Wire guard for 2ft strip

**90238**

STRP12-WG<sup>1</sup>

Wire guard for 4ft and  
8ft strip



**90240**

STRP06-RF

Reflector 2ft strip

**90242**

STRP12-RF<sup>2</sup>

Reflector 4ft and  
8ft strip



**90243**

STRP-VH<sup>4</sup>

V-hooks for strip



**90264**

STRP-QSMK<sup>3</sup>

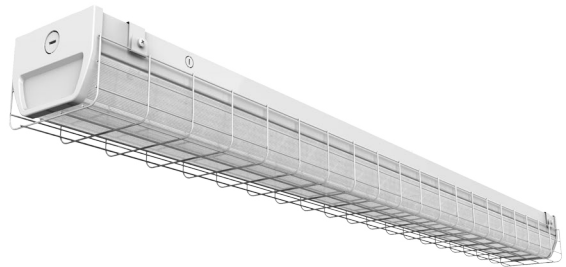
Quick surface mount kit for vision strip

### Notes:

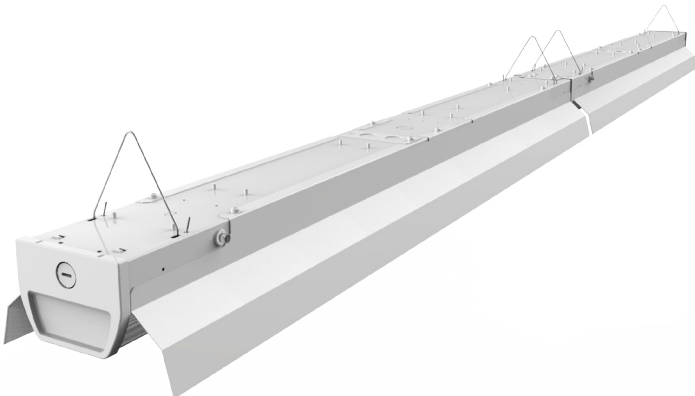
1. If for 8ft please order two pieces.
2. If this reflector will be installed at one side, then one piece for 4ft and two pieces for 8ft. If this reflector will be installed at both two sides, then two pieces for 4ft and four pieces for 8ft.
3. Two pieces are needed for 2ft, 3ft and 4ft . If for 8ft please order three pieces.
4. Soft chain mount with V-hooks is the best choice if fixture is with MSW or MSWO and needed to be installed on a ceiling of long time vibration.



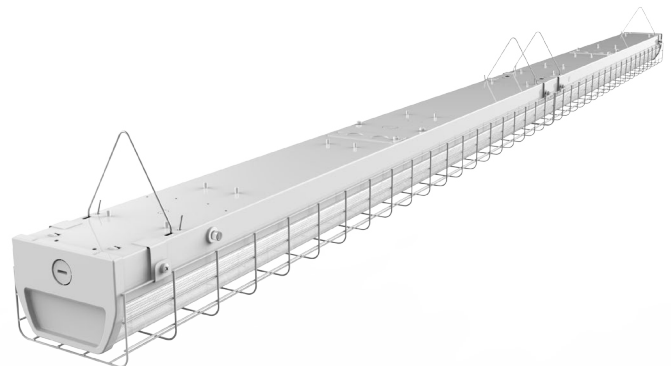
4FT Reflector with EBU



4FT Wire guard with EBU



8FT Reflector with EBU



8FT Wire guard with EBU

# PERFORMANCE DATA

## Frosted Lens

Watts	Lumen Output	Measured Watts	Size	CRI	AC Input 120V	CCT	LPW
20	3000	20	2FT	80	0.18A	5000K	150
30	4500	30	3FT	80	0.24A	5000k	150
30	4500	30	4FT	80	0.28A	5000K	150
45	6900	46	4FT	80	0.41A	5000K	150
60	9000	60	8FT	80	0.50A	5000K	150
85	11600	80	8FT	80	0.67A	5000K	145

## Clear Lens

Watts	Lumen Output	Measured Watts	Size	CRI	AC Input 120V	CCT	LPW
20	3160	20	2FT	80	0.18A	5000K	158
30	4740	30	3FT	80	0.24A	5000K	158
30	4740	30	4FT	80	0.28A	5000K	158
45	7268	46	4FT	80	0.41A	5000K	158
60	9480	60	8FT	80	0.50A	5000K	158
85	12240	80	8FT	80	0.67A	5000K	153

## 347V Frosted Lens

Watts	Lumen Output	Measured Watts	Size	CRI	AC Input 347V	CCT	LPW
20	3000	20	2FT	80	0.06A	5000K	150
30	4500	30	3FT	80	0.07A	5000k	150
30	4500	30	4FT	80	0.09A	5000K	150
45	6900	42	4FT	80	0.12A	5000K	150
60	9000	60	8FT	80	0.17A	5000K	150
85	11600	80	8FT	80	0.23A	5000K	145

# ORDERING INFORMATION

Example: STR12D30LED401F

Strip Fixture	Dimension	Dimmable	Watts	LED	CCT	Voltage	Series	Controls
STR	06 - 2FT	D - 0-10V Dimmable	20 - 20 Watts	LED	30 - 3000K	1 - 120-277V	F-Frosted lens <sup>4</sup>	Blank - None
	09 - 3FT <sup>5</sup>		26-30 Watts		35 - 3500K	2 - 347V <sup>1,3</sup>	C-Clear Lens <sup>4</sup>	MSWO - Microwave ON/OFF Sensor <sup>1</sup>
	12 - 4FT		30 - 30 Watts 45 - 45 Watts		40 - 4000K	8 - 120-347V <sup>1,3,6,7</sup>		MSW-Microwave Dimming sensor <sup>2</sup>
					50 - 5000K			EBU - Emergency Battery Back-up <sup>3</sup>
	24 - 8FT		60 - 60 Watts <sup>6</sup> 85 - 80 Watts <sup>7</sup>					

## Option



### 2ESCI

2ft End-side Cable Installed, white, no plug

Note: Standard product does not include the end-side cable. If need end-side cable installed please ask Customer Service.

1. Microwave ON/OFF sensor, for mounting height 20ft (6m) max. Microwave ON/OFF sensor is not available for 347V.
  2. Microwave dimming sensor, for mounting height 20ft (6m) max. Dimming default setting is Bi-Level dim and dimming to 50% and none Cut Off. Besides, daylight sensor default setting is disable. If need other dimming levels such as 20% or 30%, ON/OFF function and daylight sensor function, please consult with customer service in advance.
  3. The emergency test button is pre-installed on fixture. If need a remote test switch please contact factory. Emergency battery back-up is not available for 347V.
  4. Frosted lens is standard. Please contact Customer Service for the lead time of clear lens.
  5. 3ft is without DLC. Please contact Customer Service for lead time of 3ft vision strip.
  6. For 60W, only 120-347V is available.
  7. For 80W, only 120-277V and single voltage 347V are available. 120-347V is not available for 80W.
- \* Surface mount is standard. If need quick surface mount and V-hook mount please order the mounting brackets separately. Please check the accessory table for details.
- \* MSW and MSWO can not be installed in the room of long-time vibration because the vibration signal will be regarded as the moving signal to trigger sensor.
- \* White finish is standard. Custom color is available for a premium setup fee. Consult customer service for additional information.








## ABOVE ALL Lighting, Inc.

---

 1501 Industrial Way N.  
Toms River, NJ 08755

 866-222-8866

 [info@abovealllighting.com](mailto:info@abovealllighting.com)

 [www.AboveAllLighting.com](http://www.AboveAllLighting.com)

©2019 ABOVE ALL all rights reserved