



## HEAVENLY LINEAR HIGH BAY



## PRODUCT DESCRIPTION

The HEAVENLY Linear High Bay is an attractive, durable and high efficient solution for a variety of industrial and commercial applications. The extruded aluminum construction enables optimal thermal control and longer system life in complex environments such as 65°C ambient temperature. Motion sensor wireless control unit, emergency battery backup are available. Modular design, multiple lens configurations and numerous mounting options allow for precise light positioning putting the light exactly where you need it.

## FEATURE

- Textured lens options minimizes high glare.
- Achieves up to 149 °F (65 °C) ambient rating.
- Performs at up to 180 lm/W
- 10kV surge suppression protection optional.

## ELECTRICAL SYSTEM

- Input Voltage: 120-277V, 347/480V
- 50/60Hz
- 0-10V dimming
- Power Factor: > 0.98 at 120Vac
- Total Harmonic Distortion: < 20%
- Integral 6kV surge suppression protection standard
- Minimum Ambient -20°C, maximum Ambient is 65°C

## SPECIFICATION

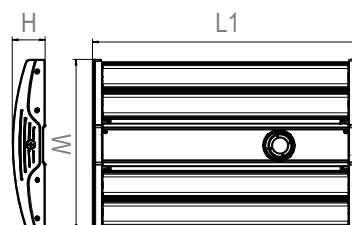
### 2FT HLHB

L1: 24"  
 W: 16.25"  
 H: 3.15"

### 4FT HLHB

L1: 45.5"  
 W: 16.25"  
 H: 3.15"

For MS-L7W



## PERFORMANCE

CRI

80

CCT

3500K、 4000K、 5000K

Dimming

0-10V Dimming Standard

Projected Lifetime

L70 - 292,000 Hours

Working Temperature

-4-149°F (-20-65°C)

Certifications

- cETLus
  - Damp location
  - DLC Premium<sup>1</sup>
  - RoHS compliant
1. DLC is not available for 440W.

## Ordering Information

### Example: HLHB02-175501-G

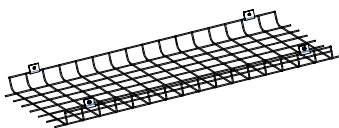
Series	Length	Watts	CCT	Voltage	Controls	Distribution	LENS
HLHB	02 - 2FT <sup>1</sup>	65 - 65 Watts	35-3500K	1 - 120V-277V	Blank - None	G - General <sup>8</sup>	Ordered and shipped separately <sup>9</sup>
		95 - 100 Watts	40-4000K	6 - 347/480V	MS-L7W - Wattstopper Sensor with White L7 Lens <sup>7</sup>		
		135 - 135 Watts	50-5000K				PCL - Polycarbonate Clear Lens <sup>4</sup>
		175 - 175 Watts			EBU - Emergency Battery Backup <sup>3</sup>		PFL - Polycarbonate Frosted Lens
		220 - 210 Watts			MOD3-Enlighted 0-10V <sup>10</sup>		AFL - Acrylic Frosted Lens <sup>5</sup>
	04 - 4FT <sup>2</sup>	220 - 210 Watts					ACL - Acrylic Clear Lens <sup>6</sup>
		270 - 270 Watts					
		350 - 350 Watts					
		420 - 420Watts					

#### Notice:

- 2FT HLHB is available from 65W to 210W
- 4FT HLHB is available from 210W to 420W
- Emergency battery backup is available in 10W with 1800lm @ 120-277V and works for a minimum of ninety (90) minutes. For ambient temperatures of 32°F-104°F (0°C-40°C). The emergency test button is pre-installed on fixture. 347/480V is not for emergency battery backup. The EBU is Title 20 compliant.
- Polycarbonate clear lens is standard. If for polycarbonate frosted lens, acrylic clear and frosted lens, please contact customer service for lead time firstly.
- Acrylic frosted lens is not available with Narrow and Medium distribution
- Acrylic clear lens is not available with Narrow and Medium distribution
- Dimming default setting is Bi-Level dim and dimming to 50%. Besides, daylight sensor default setting is disable. If need other dimming levels such as 20% or 30%, ON/OFF sensor and daylight sensor functions please contact the Customer Service or please change the settings by yourself at site.
- General distribution is standard. Medium and narrow distributions are available, please contact Customer Service if needed.
- Lens for general distribution are ordered and shipped separately. Please refers to the accessory table for details.
- Enlighted control is only for 120-277V and will take long time. Luminaire will be shipped with Sensors installed on the luminaire, allowing for individual luminaire control. Luminaires will be ready to be integrated with designated control systems. "Gateway program" need to be purchased separately. Please Ask Customer Service in advance for Details.

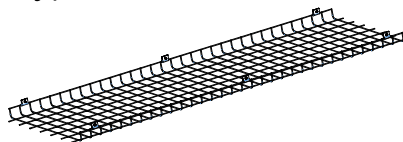
\* White end cap and aluminum finish body is standard. Custom color is available for a premium setup fee. Consult customer service for additional information

## Accessories (Ordered separately)



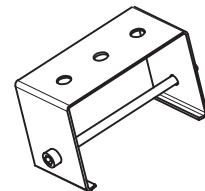
#### 90205

HLHB02-WG  
Wire guard for 2ft heavenly  
linear high bay



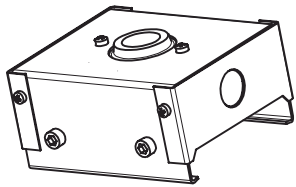
#### 90206

HLHB04-WG  
Wire guard for 4ft heavenly  
linear high bay



#### 90207

HLHB-CMK  
Channel mounting kits for  
heavenly linear high bay



**90208**

**HLHB-PMK**

Pendant mounting kits for heavenly linear high bay



**N/A**

**V-clip pair**

A pair of V-clips for heavenly linear high bay

Notices: V-clip mounting kits is standard and shipped together. All the other Accessories need to be ordered separately.



**90097**

**LHB 120V Plug and Cord**

6 feet 120V molded plug and cord for LHB with pipe clamp for strain relief



**90098**

**LHB 277V Plug and Cord**

6 feet 277V molded plug and cord for LHB with pipe clamp for strain relief



**90252**

**HLHB04-G-PFL**

4 pieces of polycarbonate frosted lens for 4ft HLHB, general distribution



**90258**

**HLHB02-G-PFL**

4 pieces of polycarbonate frosted lens for 2ft HLHB, general distribution



**90255**

**HLHB04-G-PCL**

4 pieces of polycarbonate clear lens for 4ft HLHB, general distribution

**90259**

**HLHB02-G-PCL**

4 pieces of polycarbonate clear lens for 2ft HLHB, general distribution

**90308**

**AC10-HK-300YF**

Gripple Aircraft cable 10' with lock and hook, Y-fit (**one piece**)

Notices:

1. Please order two pieces for one fixture.
2. Please check a separate manual for details of Gripple Aircraft Cable.

**90256**

**HLHB04-G-AFL**

4 pieces of acrylic frosted lens for 4ft HLHB, general distribution

**90260**

**HLHB02-G-AFL**

4 pieces of acrylic frosted lens for 2ft HLHB, general distribution

**90257**

**HLHB04-G-ACL**

4 pieces of acrylic clear lens for 4ft HLHB, general distribution

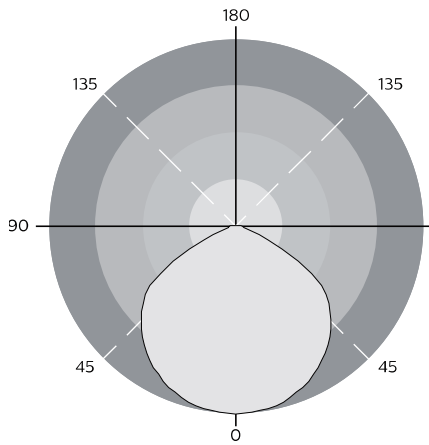
**90261**

**HLHB02-G-ACL**

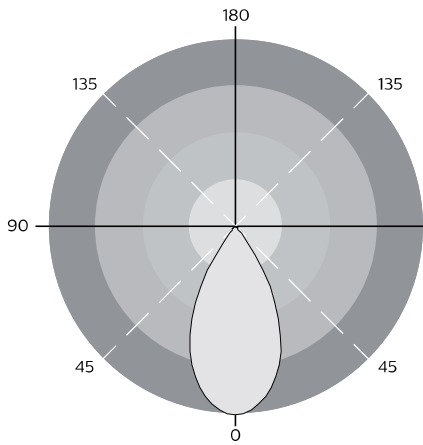
4 pieces of acrylic clear lens for 2ft HLHB, general distribution

## PHOTOMETRY

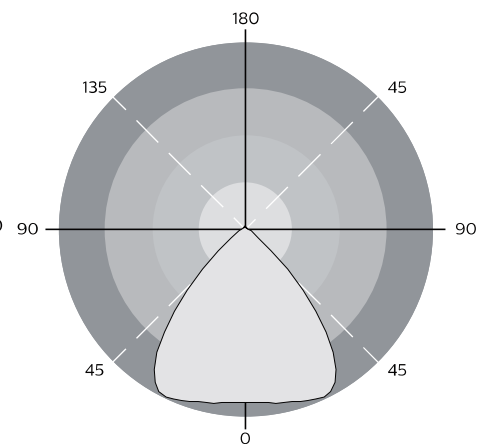
Distribution types for reference only



General



Narrow



Medium

## PERFORMANCE DATA LUMEN OUTPUT

Lumen values are measured by third party certified laboratories performed in accordance with IESNA LM-79-08. Lumen efficacy is based on the ambient temperature of 77°F.

Series	Nominal Watts	Measured Watts	Lumen	CCT, Ra	Distribution	Lens	Efficacy	Maximum Ambient
2FT HLHB	65	65	11400	5000, 80	General	None	175	65°C
	95	100	17500	5000, 80	General	None	175	65°C
	135	135	23600	5000, 80	General	None	175	65°C
	175	175	31500	5000, 80	General	None	180	65°C
	220	210	37800	5000, 80	General	None	180	60°C
4FT HLHB	220	210	37800	5000, 80	General	None	180	65°C
	270	270	47300	5000, 80	General	None	175	65°C
	350	350	63000	5000, 80	General	None	180	65°C
	420	420	75600	5000, 80	General	None	180	65°C

Lens	Lumen Multiplier
None	1
Clear Polycarbonate (PCL)	0.91
Acrylic Clear (ACL)	0.93
Polycarbonate Frosted (PFL)	0.88
Acrylic Frosted (AFL)	0.89

Series	Nominal Watts	Measured Watts	Lumen	CCT, Ra	Distribution	Lens	Efficacy	Maximum Ambient
2FT HLHB	65	65	10340	5000, 80	General	PCL	159	65°C
	95	100	15900	5000, 80	General	PCL	159	65°C
	135	135	21470	5000, 80	General	PCL	159	65°C
	175	175	28700	5000, 80	General	PCL	164	65°C
	220	210	34440	5000, 80	General	PCL	164	65°C
4FT HLHB	220	210	34440	5000, 80	General	PCL	164	65°C
	270	270	42930	5000, 80	General	PCL	159	65°C
	350	350	57400	5000, 80	General	PCL	164	65°C
	420	420	68880	5000, 80	General	PCL	164	60°C

### Lumen Ambient Temperature (LAT) Multipliers

Use these factors to determine relative lumen output for average ambient temperature from -4-149°F (-20-65°C)

Ambient		Multiplier
Celsius	Fahrenheit	
0	32	1.02
25	77	1.00
40	104	0.98
50	122	0.97
60	140	0.95
65	149	0.94

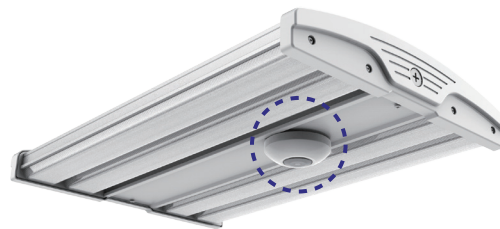
### Projected LED Lumen Maintenance

Data references the extrapolated performance projections for the Heavenly Linear High Bay in a 77°F ambient, (tested per IESNA LM-80-08 and projected per IESNA TM-21-11).

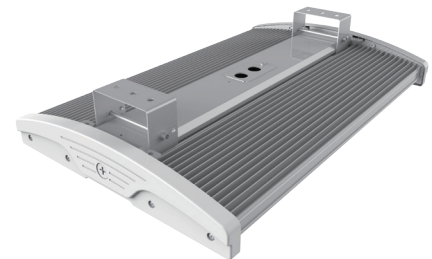
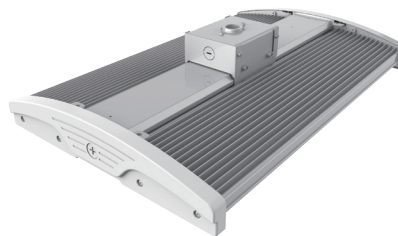
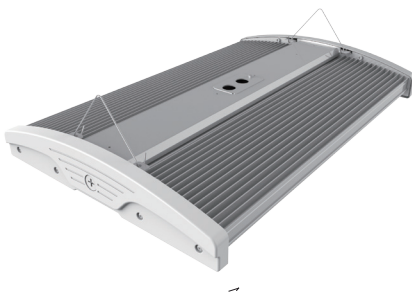
Operating Hours	23,000H	39,000H	73,000H	292,000H
Lumen Maintenance Factor	0.98(L98)	0.96(L96)	0.92(L92)	0.70(L70)



- **Wattstopper**  
Multi-level Motion Sensor



- **Enlighted** Sensor



- **V Hook** Mounting

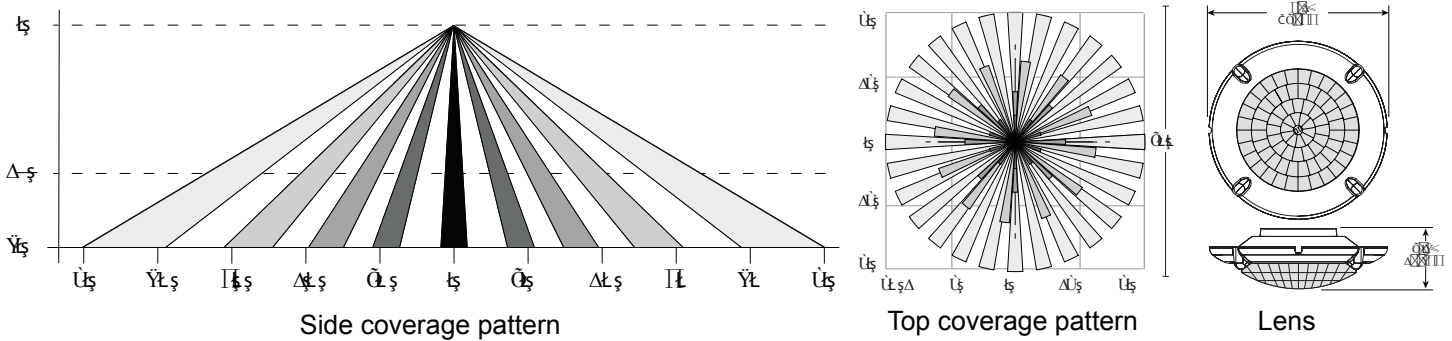
- **Pendant** Mounting

- **Channel** Mounting

## MULTI-LEVEL MOTION SENSOR (MS-L7W)

The fixture with occupancy sensor raises or lowers the electric lighting level to high, low or off based on motion and/or daylight contribution. Typically, once the sensor stops detecting movement and the time delay elapses, lights will first fade to low mode, and eventually switch off. When motion is detected, the sensor ramps the light level to high mode unless the daylight contribution is sufficient. The integral photocell can also switch the lights on and off for dusk to dawn control, so that lighting remains on overnight even without motion detection.

The L7 lens provides maximum coverage of 100 feet diameter mounted at 40 feet height. Please see below drawing for lens side and top coverage and dimensionn.



## Warranty

Five year limited warranty. Full warranty terms located at [www.aboveallLighting.com/warrantystatements](http://www.aboveallLighting.com/warrantystatements)

## Note:

Specifications subject to change without notice.