

**ABOVE ALL**

[www.AboveAllLighting.com](http://www.AboveAllLighting.com)

# The Urban Line





# Urban Line

Above All Lighting The Urban line family includes urban post top series and bollard, The VERSATILE series has the high-performance solution for the most demanding applications with an universal body and different shades. The Standard LED bollard with modern circular column shape provides downlight via various different tops including dome top, flat top and peak top.



# THE VERSATILE LED POST TOP *(None & Acorn Shade)*



The **VERSATILE series** has the high-performance solution for the most demanding applications with an universal body and different shades. It can be used in many applications such as pedestrian street, factory, schools, garden, courtyard, hotel, parking lot, public parks etc.

- None or acorn shade.
- Photocontrol and microwave motion sensor optional.
- Tempered glass lens doesn't fade and discolor.
- IES distribution Types I, II & VN for various applications.





◆ TECHNOLOGIES CENTRE  
CENTRE for BUSINESS & ACC...

# THE VERSATILE LED LUMINAIRE

*(Bell & Petunia Shade)*



The **VERSATILE series** has the high-performance solution for the most demanding applications with an universal body and different shades. It can be used in many applications such as pedestrian street, factory, schools, garden, courtyard, hotel, parking lot, public parks etc.

- Bell and petunia shades available.
- Photocontrol and microwave motion sensor optional.
- Tempered glass lens doesn't fade and discolor.
- IES distribution Types I, II & VN for various applications.

## Accessories



VPTB-PDL  
Polycarbonate Drop Lens



SGA4  
Single Gooseneck Arm  
for 4" OD Pole



TGA4  
Twin Gooseneck  
Arm for 4" OD Pole





# THE VERSATILE LED AREA LIGHT



The **VERSATILE series** has the high-performance solution for the most demanding applications with an universal body and different shades. It can be used in many applications such as pedestrian street, factory, schools, garden, courtyard, hotel, parking lot, public parks etc.

- Horizontal and vertical slip fitter mount
- Maximum 15° up and down adjustable.
- Photocontrol and microwave motion sensor optional.
- Tempered glass lens will not fade and discolor.
- IES distribution Types I, II & VN for various applications.



VPTD-VSF<sup>1</sup>

Versatile Slip Fitter for VPTD



VPTD-AR<sup>2</sup>

Arm for VPTD

#### Notice:

1. The versatile slip fitter can be mounted horizontally or vertically. Please check the installation manual for more details.
2. VPTD-AR is optional with long lead time.





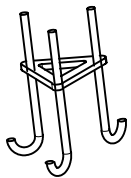
# STANDARD LED BOLLARD



The **Standard LED bollard** with modern circular column shape provides downlight via various different tops including dome top, flat top and peak top. The LED bollard is with high quality extrusion aluminum body and clear polycarbonate lens. The LED bollard is ideal for parks, lawns, plazas and residential applications.

- Dome, flat and peak tops for option
- High quality extrusion aluminum body
- Stainless steel silicone rubber sealing
- IP 66 rated for wet location

## Accessories (ORDER SEPARATELY)



90245

ABMK01

Anchor bolt (M10) mounting

kits for standard bollard







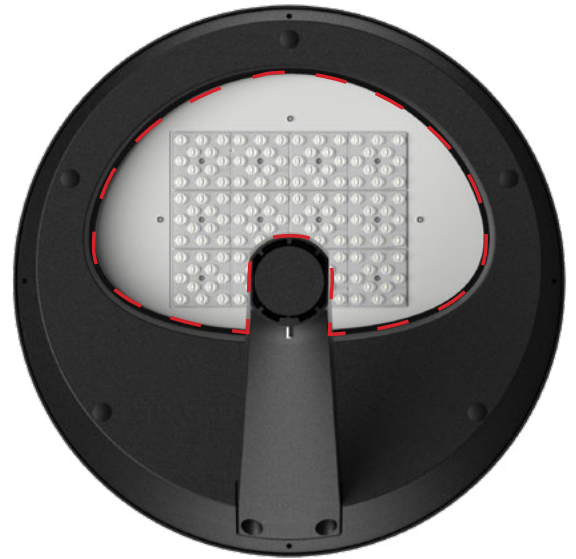
# EUNIKE LED POST TOP

Tempered glass lens doesn't fade and discolor.



**The Eunike LED Post Top** The Eunike LED Post Top brings architectural style to any area or site, impacting pedestrian-scale for improved comfort and security. Sleek single arm design brings a desired organic look into the urban environment. The Eunike optic provides glare-free illumination, with effective coverage on its available distribution patterns.

- Sleek single arm design.
- Photocontrol and microwave motion sensor optional.
- Tempered glass lens doesn't fade and discolor.
- IES distribution Types III, IV and V for various applications.



Photocontrol and microwave motion sensor optional.

Sleek single arm design



## Accessories (ORDER SEPARATELY)



Plug and Play Motion Sensor



# EUNIKE GEN2 LED LUMINARIE



The **Eunike GEN2 LED Luminarie** brings architectural style to any area or site, impacting pedestrian-scale for improved comfort and security. Support the most popular mounting type such as single arm, twins arm, post top and side entry. Various precise optical lenses available. Tool-less maintenance and easy-toinstall design.

- Different mounting arms available
- Three CCT selectable
- 30%, 50%, 75% and 100% power selectable
- Efficiency up to 150LPW
- Various precise optical lenses
- Tool-less maintenance
- Compitable with NEMA socket







Efficiency up to **140LPW**  
No shadows from the brackets

Typical acorn-shaped post top



## CONE LED POST TOP

**The Cone LED Post Top** is supplied with a cast aluminum roof which includes optimized heat sinks to provide maximum life and performance for the LED light sources. Optical design, greatly improved the light utilization and evenness. It can be widely used for outdoor lighting applications such as lawn, courtyards, roadways.

- Typical acorn-shaped post top
- Efficiency up to 140LPW
- No shadows from the brackets
- 10KA surge suppression protection
- IP65 rating









# CONE LED BOLLARD

**The Cone LED Bollard** has a round appearance for good decorative effect, sized in 3.5ft height. Optical design, greatly improves the light efficiency and uniformity. Efficiency is higher than 115 lm/W. This bollard is an excellent choice for walkways, entrances, promenades, plazas, courtyards, driveways, bridges, and landscaped areas.



- Simple and sleek design
- Efficiency is higher than 115 lm/W
- IP65 rated for wet location






## The Urban Line


---




### ABOVE ALL Lighting, Inc.

---

 1135 Thomas Busch Highway,  
Pennsauken, NJ 08110

 866-222-8866

 [info@abovealllighting.com](mailto:info@abovealllighting.com)

 [www.AboveAllLighting.com](http://www.AboveAllLighting.com)

©2021 ABOVE ALL all rights reserved