



To reduce the risk of electrical shock, turn off power supply before installation or servicing.

ACCESSORY LIST



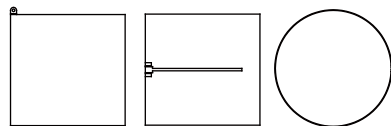
Wrench



Cylindrical Hexagon
Socket Screw

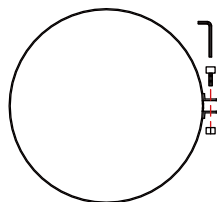


Nut

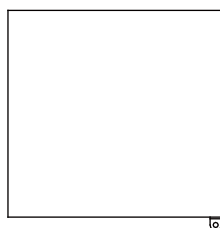


Full visor

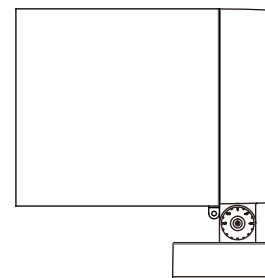
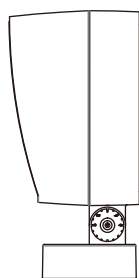
INSTALLATION



1. Insert the screw into
the full visor hole.



2. Insert the Full Visor onto the
light fixture.



3. Lock the screw tightly.