



The SCOTT Square Bollard has shielded light distribution. This bollard has UV powder coated die cast high quality aluminum body, moulded silicone gasket and stainless steel screws. This bollard is an excellent choice for walkways, entrances, plazas, courtyards, driveways, bridges, and landscaped areas.

TECHNICAL DATA

Wattage	10W, 20W, 40W
CCT	3000K, 4000K
Diver	0-10V Dimming
CRI	80
Input Voltage	120-277V, 50/60Hz
Projected Lifetime	L70-100,000 Hours
Operating Temp.	-30°C to 40°C (-22°F to 104°F)
Certifications	cETL listed
	RoHS compliant
Power Factor	>0.9 @120Vac
Harmonic Distortion	<20% at full load
IP Rating	IP65

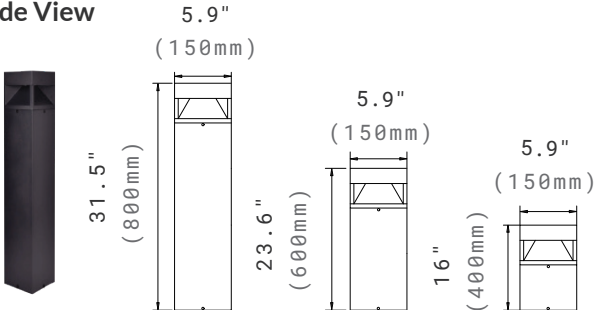
FEATURES

- Die cast aluminum.
- Shielded light distribution.
- IP65 rated for wet location.

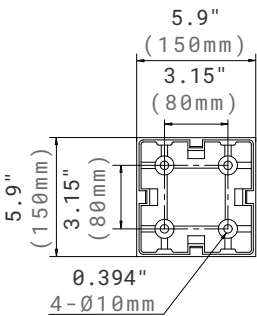
SPECIFICATION

Dimension

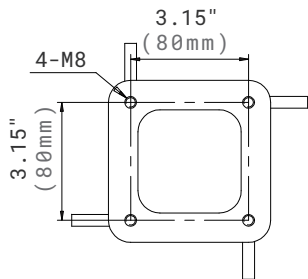
Side View



Base Plate



Anchor Bolts



ORDERING INFORMATION

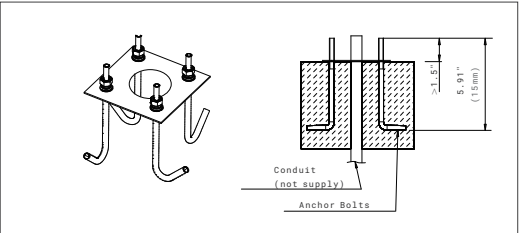
EXAMPLE: SSBD-32H-20301-SD-BK

SSBD						
Series	Height	Wattage	CCT	Voltage	Distribution	Finish
SSBD	16H	10	30	1	SD	BK ¹
Scott Square	16"	10W	3000K	120-277V		Black
Bollard	Height	20	40			Optional
	24H	20W	4000K			Finish
	23.6"	40				Colors
	Height	40W				(Additional
	32H					Charge
	31.5"					applied) ¹
	Height					

NOTE:

1. Black finish is standard. Custom finish colors are available at an additional charge. Please contact Customer Service for premium options.

ACCESSORIES(ORDERED SEPARATELY)



ABMK-SSBD-S
Anchor Bolts Mounting Kits.

PERFORMANCE DATA

Lumen values are measured by third party certified laboratories performed in accordance with IESNA LM-79-08 as well as Lighting Facts listed.

Wattage	Lumen Output	AC Input 120V	CRI	CCT
10W	660lm	0.12A	80	4000K
20W	1280lm	0.17A	80	4000K
40W	2560lm	0.33A	80	4000K

BUG RATING TABLE

Performed to IESNA LM-79-08 standards by a NVLAP accredited laboratory.

Model	BUG Rating
STBD-S-XXH-20401	B1-U2-G0
STBD-S-XXH-24401	B1-U2-G1

WARRANTY

5 year limited warranty.

Specifications subject to change without notice.