



VAGARY PENDANT LIGHT



PRODUCT DESCRIPTION

The Vagary pendant lights exceptionally minimalist design incorporates our ultra-thin, semi-transparent vertical optics. Optional seamless row mounting for continuous light. It is perfect for applications that include conference rooms, open offices, retail settings, anywhere you desire an elegant statement piece.

FEATURES

- Sleek and elegant minimalist Design
- Transparent optic and edge-lit
- Integral driver, isolated circuit
- Seamless continuous row mount
- CCT selectable

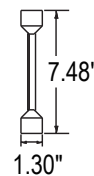
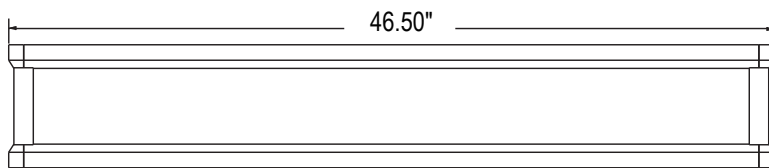
ELECTRICAL SYSTEM

- Input Voltage: 120-277V, 50/60Hz
- Operating temperature range: -4-104°F (-20-40°C)
- Power Factor: > 0.9 at full load
- Total Harmonic Distortion: < 20% at full load

SPECIFICATION

Net Weight: 11 lbs / 5 kg

Max Pendant Cable Length: 3.9ft (1300mm)



PERFORMANCE

CRI

80

CCT

3000K, 3500K, 4000K

Dimming

1-10V Dimming

Projected Lifetime

L70 - 100,000 Hours

Working Temperature

-4-104°F (-20-40°C)

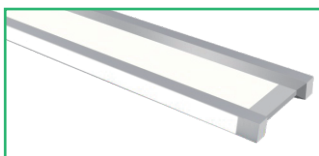
Certifications

- cULus conforms to UL Std. 1598Cert. to CSA Std. C22.2 No.250.0
- Suitable for dry locations
- RoHS compliant

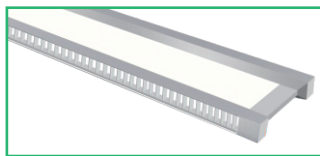
PERFORMANCE DATA

Lumen values are measured by third party certified laboratories performed in accordance with IESNA LM-79-08 as well as Lighting Facts listed.

Flush Diffused Lens



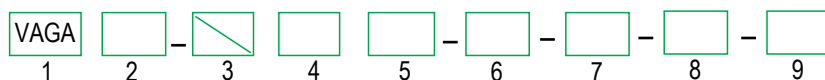
Louver Lens



Lengths	4FT	4FT
Wattage	40W	40W
Voltage	120-277V (Int.Driver)	120-277V (Int.Driver)
Efficacy	105lm/w @ 3500K	90lm/w @ 3500K
Lumen Output	4200lm @ 3500K	3600lm @ 3500K

Ordering Information

Example: VAGA12-SW1-PM-D-FDL



1. Series

☒ VAGA

2. Size

☐ 12 - 4FT

3. Driver

☒ Blank - Integral

4. CCT

☐ SW - 3000K / 3500K / 4000K Selectable

5. Voltage

☐ 1 - 120-277V

6. Mounting Options

☐ PM - Pendant*

* Aircraft Cable pendant mount kits include dry ceiling and drop ceiling and they need to be bought separately. Please refer to the following accessory table to choose the right pendant mounting kits.

7. Light Distribution

☐ D - Direct

☐ ID - Indirect

* Direct distribution is standard.

8. Lens Options

☐ FDL - Flush Diffused Lens¹

☐ LVL - Louver Lens²

1. Flush Diffused Lens is standard.

2. Louver lens is only available for direct distribution.

9. Finish

☐ Blank - White

* White finish is standard. Custom color is available for a premium setup fee. Consult customer service for additional information.

Accessories (ordered separately and field installed)

Drop Ceiling Suspension Mount List



MAG-PMK3-5FT

Aircraft Cable Pendant Mount Kits for Drop Ceiling, with 5ft aircraft cable and 5ft power cord (One set per fixture)

MAG-PMK3-12FT

Aircraft Cable Pendant Mount Kits for Drop Ceiling, with 12ft aircraft cable and 12ft power cord (One set per fixture)

* Suitable for 9/16" and 15/16" Flat Ceiling.
If for 9/16" slot ceiling please contact Customer Service.

Dry Ceiling Suspension Mount List



MAG-PMK1-5FT

Aircraft Cable Pendant Mount Kits for Dry Ceiling, with 5ft aircraft cable and 5ft power cord (One set per fixture)

MAG-PMK1-12FT

Aircraft Cable Pendant Mount Kits for Dry Ceiling, with 12ft aircraft cable and 12ft power cord (One set per fixture)

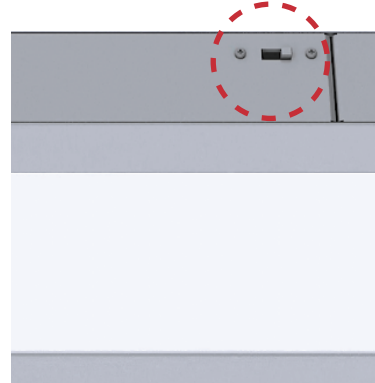
- **Seamless Continuous Row Mount**

Each power feed connections up to 40ft



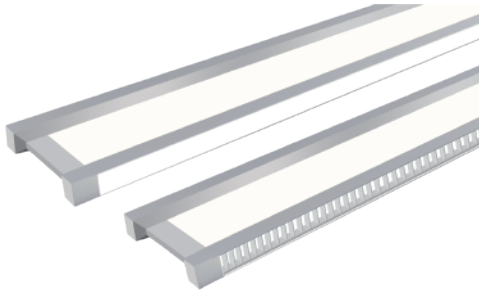
- **CCT Selectable**

3000K / 3500K / 4000K Selectable



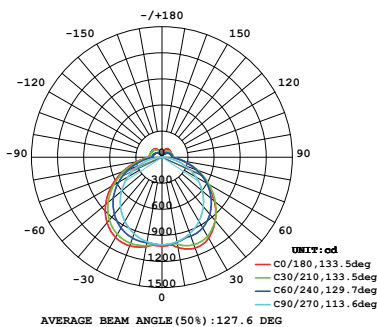
- **Visual Comfort**

Diffused flat lens and Louver lens



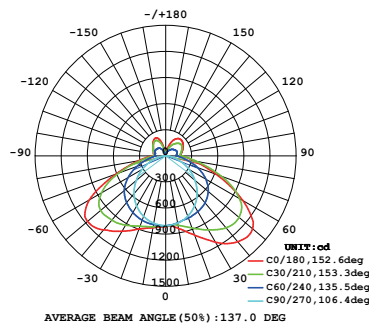
PHOTOMETRY

All published luminaire photo metric testing performed to IESNA LM-79-08 standards by a NVLAP certified laboratory. IESNA LM-79-08 specifies the entire luminaire as the source resulting in a fixture efficiency of 100%. Result may vary per actual order.



Direct

13% uplight / 87% downlight



Indirect

17% uplight / 83% downlight

Warranty

Five year limited warranty. Full warranty terms located at www.abovealllighting.com/warrantystatements.

Specifications subject to change without notice.