



BRIWALL LED WALL PACK



PRODUCT DESCRIPTION

The Briwall led wall pack series is constructed from durable die-cast aluminum. Full cut-off design. Wattage and CCT selectable. Long-lasting, low maintenance, energy efficient replacements for Metal Halide and High Pressure Sodium lamp sources. Designed for commercial and industrial wall applications.

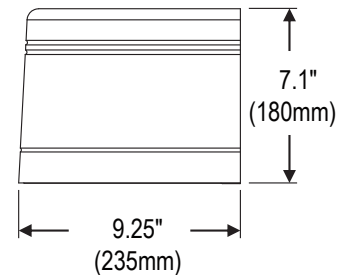
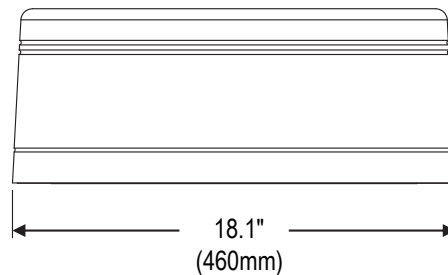
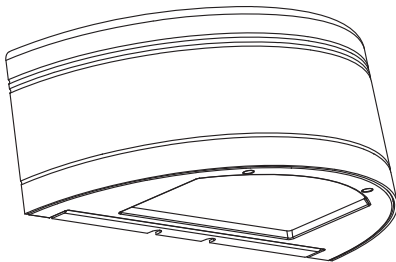
FEATURE

- Cutoff distribution design
- Wattage and CCT selectable
- Emergency back up, photocontrol and sensor available

ELECTRICAL SYSTEM

- Input voltage: 120-277V
- 50/60Hz
- Power Factor: >0.9
- Total Harmonic Distortion: <20% at full load
- Working Temperature: -40 - 104°F (-40 - 40°C)
- 0-10V Dimming Standard

DIMENSION



PERFORMANCE

CRI

70

CCT

4000K, 5000K

Projected Lifetime

L70 -100,000 Hours

Working Temperature

-40 - 104°F (-40 - 40°C)

Certifications

- cUL listed
- Suitable for wet locations
- RoHs compliant

PERFORMANCE DATA

LUMEN OUTPUT

Lumen values are measured by third party certified laboratories performed in accordance with IESNA LM-79-08 as well as Lighting Facts listed.

Nominal Watts	Lumen Output	AC Input 120V	CCT	Distribution	CRI	LPW
25W	3250	0.21A	4000K	Wide Throw	>70	130
45W	5850	0.37A	4000K	Wide Throw	>70	130
65W	8500	0.54A	4000K	Wide Throw	>70	130

Ordering Information

Example: BWP-SPSW1-FT

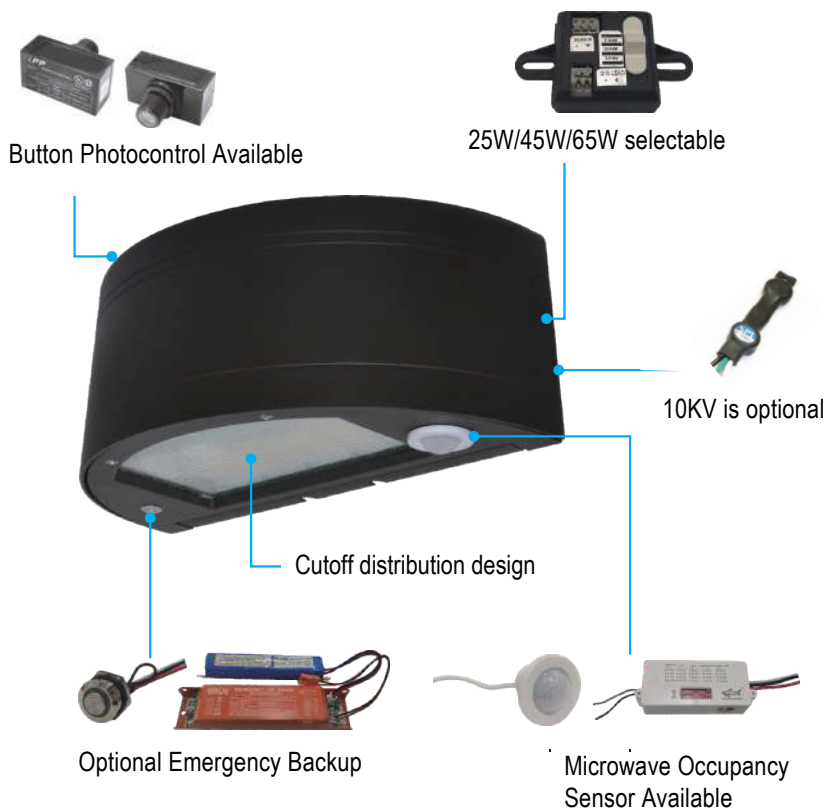
Name	Watts	CCT	Voltage	Control	Distribution	Finish
BWP	SP - 25W/45W/65W selectable ¹	SW - 3000K 4000K 5000K selectable ²	1 - 120-277V	Blank - None PC - Photocontrol MS - PIR Sensor ³ EBU - Emergency Battery Backup ⁴	FT - Forward Throw ⁵ WT - Wide Throw ⁵	Blank - Bronze

Notice:

1. 45W is default setting.
2. 4000K is default setting.
3. Mounting height is 40ft (12m) max. Please check the last page for more sensor setting information.
4. Ambient working temperature for Emergency battery backup is 32°F -104°F (0 °C -40°C).
5. Forward throw is standard. Wide throw is optional.

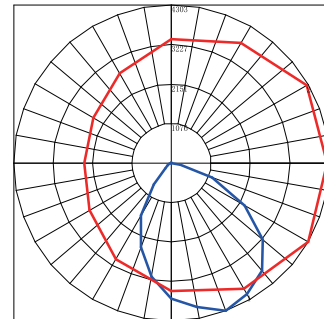
* Custom colors are available at an additional charge.

FEATURE



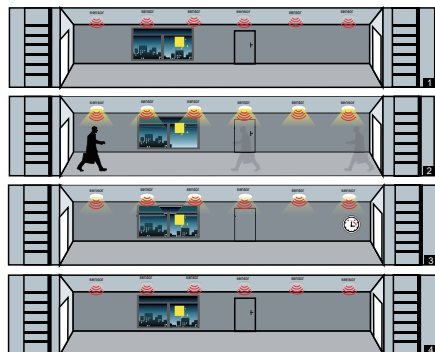
PHOTOMETRY

All published luminaire photo metric testing performed to IESNA LM-79-08 standards by a NVLAP certified laboratory.



PIR DIMMING SENSOR FUNCTION

The sensor is an innovative motion sensor, switch on the light on detection of movement, and switch off after a hold time when there is no motion detected.



1. No motion detected, all lamps switch off.
2. Any movement is detected from any direction, all lamps synchronously switch on.
3. No motion is detected in detection area, all lamps synchronously dim to a low light level after hold time.
4. After stand-by period, the lamps switch off if no movement is detected in the detection zone.

Note: if you choose STAND-BY DIM is 0, the stand-by period is 0, it is ON/OFF function.

PIR DIMMING SENSOR SETTING BRI810-B-M8 (120-277V)

By selecting the combination on the DIP switch, sensor data can be precisely set for each specific application. The sensor setting also can be done by a remote control (RC-100) which need to be bought separately.

	1	2	
I	↓	↓	20%
II	↓	↑	50%
III	↑	↓	75%
IV	↑	↑	100%

Sensitivity

Sensitivity can be reduced by selecting the combination on the DIP switches to fit precisely each application.

Default Setting: 100%

	3	4	
I	↓	↓	10 S
II	↓	↑	1 Min
III	↑	↓	5 Min
IV	↑	↑	15 Min

Hold time

Refers to the time period the lamp remains at 100% illumination after no motion detected.

Default Setting: 1min

	5	6	
I	↓	↓	☀
II	↓	↑	10 Lux
III	↑	↓	30 Lux
IV	↑	↑	50 Lux

Daylight sensor

The sensor can be set to only allow the lamp to illuminate below a defined ambient brightness threshold.

Default Setting: 30lux

	7	8	
I	↓	↓	0%
II	↓	↑	10%
III	↑	↓	30%
IV	↑	↑	50%

Stand-by dimming level

The low light level you would like to have after the hold time in the long absence of people.

Default Setting: 30%

	9	10	
I	↓	↓	+ ∞
II	↓	↑	1 Min
III	↑	↓	30 Min
IV	↑	↑	60 Min

Stand-by time

Refers to the time period the lamp remains at a low light level before it completely switches off in the long absence of people. When set to " + ∞ " mode, the low light is maintained until motion is detected

Default Setting: +∞

WARRANTY

Five year limited warranty.

Note: Specifications subject to change without notice.