



The COPL Column LED Light has elegant, slim and column design. It brings architectural style to any area or site, impacting pedestrian-scale for improved comfort and security. High quality aluminum body, polycarbonate shade, moulded silicone gasket and stainless steel screws. This pole light is an excellent choice for walkways, entrances, promenades, plazas, courtyards, driveways, bridges, and landscaped areas.

TECHNICAL DATA

Wattage	30W
CCT	3000K, 4000K
Dimming	Non-Dimming is standard 0-10V Dimming is optional
CRI	70 is standard 80 is optional
Input Voltage	120-277V, 50/60Hz
Projected Lifetime	L70-100,000 Hours
Operating Temp.	-22°F to 104°F (-30°C to 40°C)
Certifications	cETL Listed RoHS compliant
Power Factor	>0.9
Harmonic Distortion	<20% at full load
IP Rating	IP65

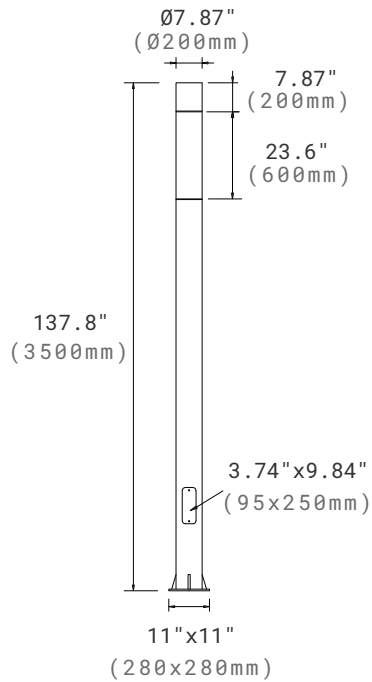
FEATURES

- Die cast aluminum.
- IP65 rated for wet location.

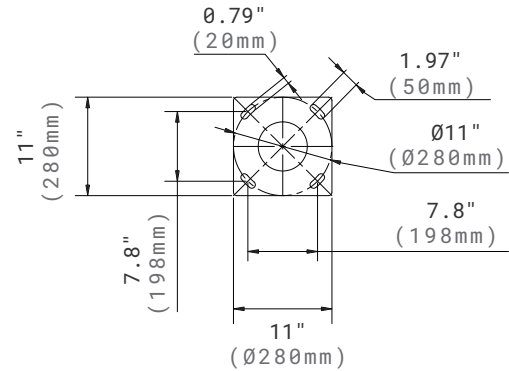
SPECIFICATION

Dimension

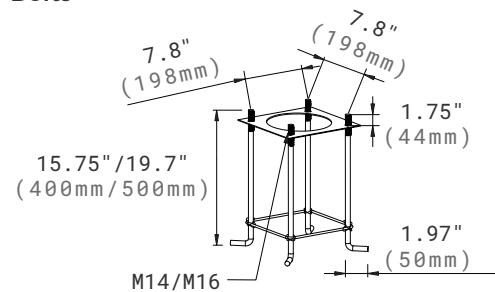
Side View



Base Plate

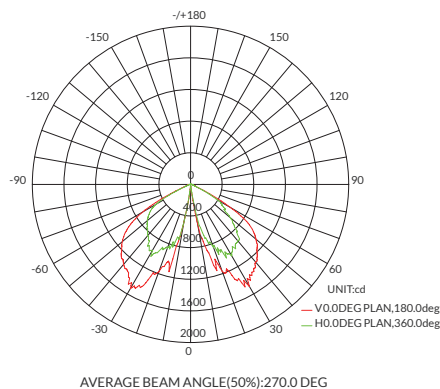


Anchor Bolts



PHOTOMETRY

All published luminaire photometric testing performed to IESNA LM-79-08 standards by a NVLAP certified laboratory. IESNA LM-79-08 specifies the entire luminaire as the source resulting in a fixture efficiency of 100%. Result may vary per actual order.



ORDERING INFORMATION

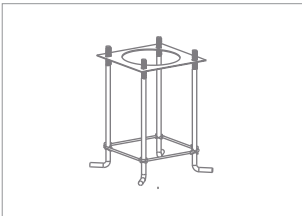
EXAMPLE: COPL-30301-BK

COPL						
Name	Wattage	CCT	Voltage	Control	Finish	Options
COPL	30 30W	30 3000K 40 4000K	1 120-277V	BLANK On/Off	BK ¹ Black Optional Finish Colors (Additional Charge applied) ¹	BLANK Non-Dimming D 0-10V Dimming Driver

NOTE:

1. Black finish is standard. Custom finish colors are available at an additional charge. Please contact Customer Service for premium options.
The pole and anchor bolts need to be bought separately.

ACCESSORIES(ORDERED SEPARATELY)

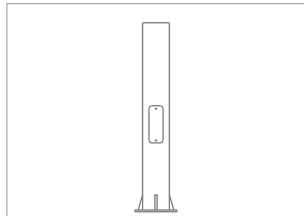


ABMK-COPL-3/4M

Anchor Bolts Mounting
Kits for 3 to 4 meters
height pole M14x400mm.

ABMK-COPL-5/6M

Anchor Bolts Mounting
Kits for 4 to 5 meters
height pole M16x500mm.



COPL-2.7POLE-BK

2.7 meters Pole, Black.

COPL-4.5POLE-BK

4.5 meters Pole, Black.

** Pole length and finish
color can be customized.*

PERFORMANCE DATA

Lumen values are measured by third party certified laboratories performed in accordance with IESNA LM-79-08 as well as Lighting Facts listed.

Wattage	Lumen Output	CCT	CRI
30W	3400lm	4000K	70

BUG RATING TABLE

Performed to IESNA LM-79-08 standards by a NVLAP accredited laboratory.

Model	BUG Rating
COPL-30301	B2-U0-G1

WARRANTY

5 year limited warranty.

Specifications subject to change without notice.