



The MACK LED Bollard comes in simple and modern rectangular design. Fully shielded design used to control unwanted light in residential areas. This bollard has UV powder coated die cast high quality aluminum body, tempered safety glass, moulded silicone gasket and stainless steel screws. This bollard is an excellent choice for walkways, entrances, promenades, plazas, courtyards, driveways, bridges, and landscaped areas.

TECHNICAL DATA

Wattage	10W
CCT	3000K, 4000K
Dimming	Non-Dimming is standard 0-10V Dimming is optional
CRI	80
Input Voltage	120-277V, 50/60Hz
Projected Lifetime	L70-100,000 Hours
Operating Temp.	-86°F to 104°F (-30°C to 40°C)
Certifications	cETL listed RoHS compliant
Power Factor	>0.9 @120Vac
Harmonic Distortion	<20% at full load
IP Rating	IP65

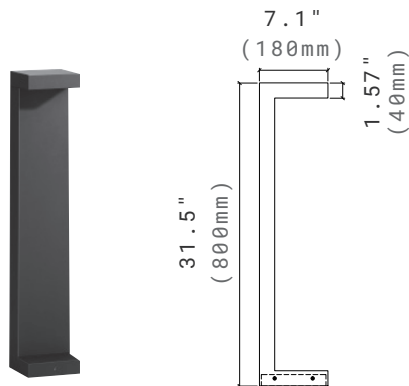
FEATURES

- Fully shielded design.
- Die cast aluminum body.
- Tempered safety glass.
- IP65 rated for wet location.

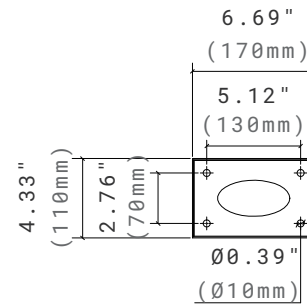
SPECIFICATION

Dimension

Side View



Base Plate



ORDERING INFORMATION

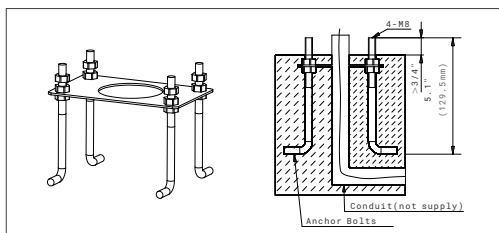
EXAMPLE: MBD32H-LB-10401-V-BK

MBD									
Series	Height	Base	Watts	CCT	Voltage	Controls	Distribution	Finish	Options
MBD Mack Bollard	32H 31.5" Height	LB	10 10W	30 3000K 40 4000K	1 120-277V	Blank On/Off	V Type V	BK Black	BLANK Non- Dimming D 0-10V Dimming Driver

NOTE:

- Standard finish is black. Custom colors might be available for an additional fee. Please check with Customer Service for more information.

ACCESSORIES(ORDERED SEPARATELY)



91309

ABMK-MBD-LB

Anchor Bolts Mounting Kits .

PERFORMANCE DATA

Lumen values are measured by third party certified laboratories performed in accordance with IESNA LM-79-08 as well as Lighting Facts listed.

Wattage	Lumen Output	AC Input 120V	CRI	CCT	LPW
10W	700lm	0.08A	80	3000K	70

BUG RATING TABLE

Performed to IESNA LM-79-08 standards by a NVLAP accredited laboratory.

Model	BUG Rating
MBD32H-LB-10301-V-BK	B0-U0-G0

WARRANTY

5 year limited warranty.

Specifications subject to change without notice.

Ref#: 20250606