



The MACK LED Bollard comes in simple and modern rectangular design. Fully shielded design used to control unwanted light in residential areas. This bollard has UV powder coated die cast high quality aluminum body, tempered safety glass, moulded silicone gasket and stainless steel screws. This bollard is an excellent choice for walkways, entrances, promenades, plazas, courtyards, driveways, bridges, and landscaped areas.

## TECHNICAL DATA

|                            |                                |
|----------------------------|--------------------------------|
| <b>Wattage</b>             | 10W                            |
| <b>CCT</b>                 | 3000K, 4000K                   |
|                            | 3000K-DarkSky Approved         |
| <b>Dimming</b>             | Non-Dimming is standard        |
|                            | 0-10V Dimming is optional      |
| <b>CRI</b>                 | 80                             |
| <b>Input Voltage</b>       | 120-277V, 50/60Hz              |
| <b>Projected Lifetime</b>  | L70-100,000 Hours              |
| <b>Operating Temp.</b>     | -86°F to 104°F (-30°C to 40°C) |
| <b>Certifications</b>      | cETL listed                    |
|                            | RoHS compliant                 |
|                            | DarkSky Approved for CCT of    |
|                            | 3000K and below                |
| <b>Power Factor</b>        | >0.9 @120Vac                   |
| <b>Harmonic Distortion</b> | <20% at full load              |
| <b>IP Rating</b>           | IP65                           |

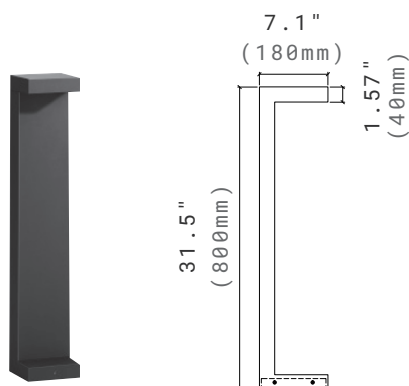
## FEATURES

- Fully shielded design.
- Die cast aluminum body.
- Tempered safety glass.
- IP65 rated for wet location.

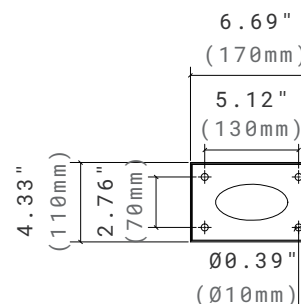
## SPECIFICATION

### Dimension

#### Side View



#### Base Plate



## ORDERING INFORMATION

### Standard Model

EXAMPLE: MBD32H-LB-10401-V-BK

| MBD                    |                        |      |           |                            |               |              |                                       |   |
|------------------------|------------------------|------|-----------|----------------------------|---------------|--------------|---------------------------------------|---|
| Series                 | Height                 | Base | Wattage   | CCT                        | Voltage       | Distribution | Finish                                | Options   |
| MBD<br>Mack<br>Bollard | 32H<br>31.5"<br>Height | LB   | 10<br>10W | 30<br>3000K<br>40<br>4000K | 1<br>120-277V | V<br>Type V  | BK <sup>1</sup><br>Black <sup>1</sup> | BLANK<br>Non-<br>Dimming<br><br>D<br>0-10V<br>Dimming<br>Driver |

### NOTE:

- Standard finish is black. Custom colors might be available for an additional fee. Please check with Customer Service for more information.

## ORDERING INFORMATION

**DarkSky-Approved Model**

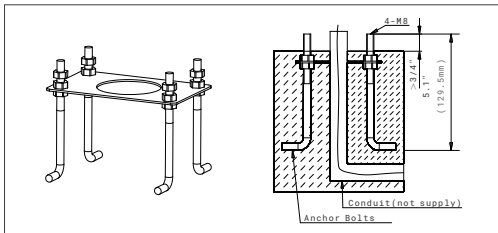
EXAMPLE: MBD32H-LB-10301-V-BK-D

| MBD                    |                        |      |           |             |               |              |                                       |                                 |
|------------------------|------------------------|------|-----------|-------------|---------------|--------------|---------------------------------------|---------------------------------|
| Series                 | Height                 | Base | Wattage   | CCT         | Voltage       | Distribution | Finish                                | Options                         |
| MBD<br>Mack<br>Bollard | 32H<br>31.5"<br>Height | LB   | 10<br>10W | 30<br>3000K | 1<br>120-277V | V<br>Type V  | BK <sup>1</sup><br>Black <sup>1</sup> | D<br>0-10V<br>Dimming<br>Driver |

### NOTE:

- Standard finish is black. Custom colors might be available for an additional fee. Please check with Customer Service for more information.

## ACCESSORIES (ORDERED SEPARATELY)



91309

**ABMK-MBD-LB**

Anchor Bolts Mounting Kits.

## PERFORMANCE DATA

Lumen values are measured by third party certified laboratories performed in accordance with IESNA LM-79-08 as well as Lighting Facts listed.

| Wattage | Lumen Output | AC Input<br>120V | CRI | CCT   | LPW |
|---------|--------------|------------------|-----|-------|-----|
| 10W     | 700lm        | 0.08A            | 80  | 3000K | 70  |

## BUG RATING TABLE

Performed to IESNA LM-79-08 standards by a NVLAP accredited laboratory.

| Model                | BUG Rating |
|----------------------|------------|
| MBD32H-LB-10301-V-BK | B0-U0-G0   |