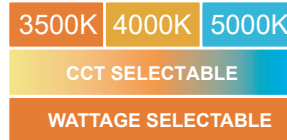




## SELECTABLE EDGE-LIT LED FLAT PANEL



### PRODUCT DESCRIPTION

The selectable flat panel features edge-lit and PMMA light guide plate design, slim and low profile enables superior uniformity. Comes in 2x2, 2x4 and 1x4 configurations. Ideal for standard T-bar and narrow grid drop ceiling to replace the fluorescent troffer in offices, supermarkets, schools and other indoor applications.

### FEATURE

- Wattage and CCT selectable
- 120-347V available
- Low-profile and edge-lit design
- PMMA LGP, never get yellowing

### ELECTRICAL SYSTEM

- Input voltage: 120-277V, 120-347V, 50/60Hz
- Power Factor: >0.9
- Total Harmonic Distortion: <20% at full load
- Working Temperature: -20~40°C (-4~104°F)

### SPECIFICATION

#### 2X2

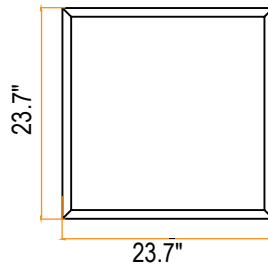
Length: 23.7"

Width: 23.7"

Depth without driver: 0.4"

Depth driver: 1.75"

Max. Weight: 4.4 lbs (2kg)



#### 1X4

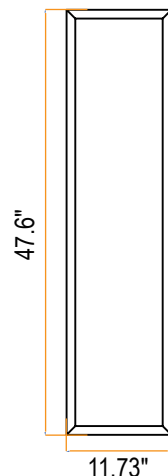
Length: 47.6"

Width: 11.73"

Depth without driver: 0.4"

Depth driver: 1.75"

Max. Weight: 5.07 lbs (2.3kg)



#### 2X4

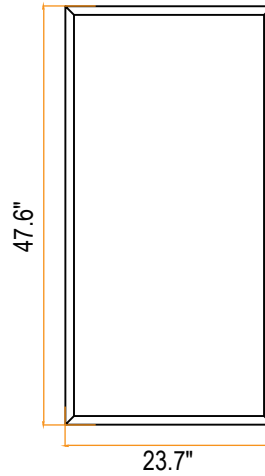
Length: 47.6"

Width: 23.7"

Depth without driver: 0.4"

Depth driver: 1.75"

Max. Weight: 9.04 lbs (4.1kg)



### PERFORMANCE

CRI

80

CCT

3500K、4000K、5000K

Dimming

0-10V Dimming Standard

Projected Lifetime

L70 -100,000 Hours

Working Temperature

-4~104°F (-20~40°C)

Certifications

- cULus conforms to UL Std. 1598Cert. to CSA Std. C22.2 No.250.0
- Suitable for dry locations
- Type IC Rated, suitable for insulated ceilings
- RoHS compliant

## Ordering Information

### Example: SEFLP22D-SP1-SW8

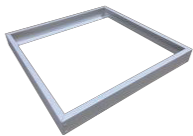
Name	Dimension	Dimmable	Watts	- CCT	- Voltage	- Control
<b>SEFLP</b>	<b>22 - 2x2'</b>	<b>D - 1-10V dimming</b>	<b>SP1 - Selectable Power 25W/30W/40W<sup>1</sup></b>	<b>SW - Selectable White 3500K/4000K/5000K<sup>3</sup></b>	<b>1- 120-277V</b>	<b>Blank - None</b>
	<b>14 - 1x4'</b>		<b>SP1 - Selectable Power 25W/30W/40W<sup>1</sup></b>		<b>8- 120-347V</b>	<b>EBU - Emergency Battery Back-up<sup>4</sup></b>
	<b>24 - 2x4'</b>		<b>SP2 - Selectable Power 30W/40W/50W<sup>2</sup></b>			

#### Notice:

- 40W is default setting, If need other wattage, please contact Customer Service in advance to change the setting in factory or change the setting in the field
- 50W is default setting, If need other wattage, please contact Customer Service in advance to change the setting in factory or change the setting in the field
- 3500K is default setting. If need other CCT please contact Customer Service in advance to change the setting in factory or change the setting in the field.
- Emergency battery back-up is for ambient temperatures of 32°F -95°F (0 °C -35°C ). Emergency battery back-up is for 120-277V.

\* White finish is standard. Additional charge will apply for customized color.

## Accessories (Ordered separately)



**90106K**  
2\*2 Surface Mount Kit  
**90122K**  
1\*4 Surface Mount Kit  
**90123K**  
2\*4 Surface Mount Kit



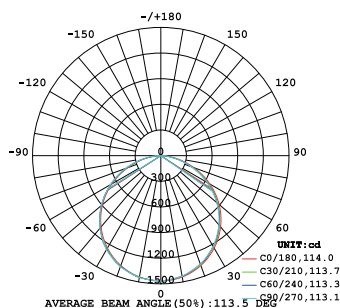
**90139K**  
1\*4 Flange Kit  
**90140K**  
2\*4 Flange Kit  
**90141K**  
2\*2 Flange Kit



**90579**  
FLP-SK  
Suspension Kit for 2\*2, 1\*4  
and 2\*4 FLP (4pcs cables)

## PHOTOMETRY

All published luminaire photo metric testing performed to IESNA LM-79-08 standards by a NVLAP certified laboratory.



## PERFORMANCE DATA

### LUMEN OUTPUT

Lumen values are measured by third party certified laboratories performed in accordance with IESNA LM-79-08 as well as Lighting Facts listed.

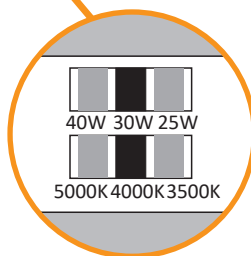
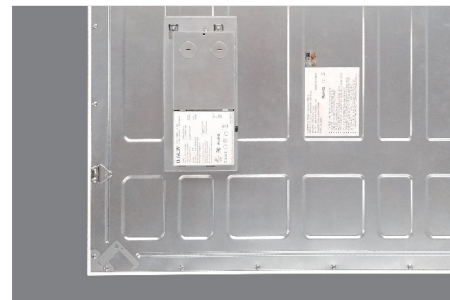
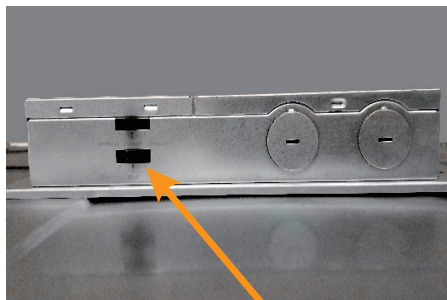
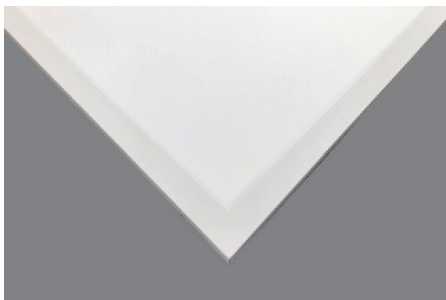
#### Lumen Ambient Temperature (LAT) Multipliers

Use these factors to determine relative lumen output for average ambient temperature from -4-104°F (-20-40°C).

Watts	Size	Nominal Lumen	CCT	CRI	LPW
25W	2x2/1x4	2750lm	4000K	>80	110
30W	2x2/1x4/2x4	3300lm	4000K	>80	110
40W	2x2/1x4/2x4	4400lm	4000K	>80	110
50W	2x4	5500lm	4000K	>80	110

Ambient		Multiplier
Celsius	Fahrenheit	
0	32	1.02
10	50	1.01
20	68	1.00
25	77	1.00
30	86	1.00
40	104	0.99

Note: Actual performance may differ as a result of end-user environment and application. All values are design or typical values, measured under laboratory conditions at 25 °C. Specifications subject to change without notice



## Warranty

Five year limited warranty. Full warranty terms located at [www.aboveallLighting.com/warrantystatements](http://www.aboveallLighting.com/warrantystatements)

## Note:

Specifications subject to change without notice.