



SAFETY INSTRUCTION



READ CAREFULLY BEFORE INSTALLING FIXTURE. PLEASE KEEP THIS MANUAL FOR FUTURE USE.

Fixtures must be wired in accordance with the National Electrical Code and all applicable local codes. Proper grounding is required for safety.

THIS PRODUCT MUST BE INSTALLED IN ACCORDANCE WITH THE APPLICATION CODE BY A PERSON FAMILIAR WITH THE CONSTRUCTION AND OPERATION OF THE PRODUCT AND THE HAZARDS INVOLVED.

MAKE CERTAIN POWER IS OFF BEFORE INSTALLING OR MAINTAINING FIXTURE.

CHECK THAT VOLTAGE IS COMPATIBLE WITH FIXTURE DRIVER. USE APPROVED CONNECTORS FOR ALL ELECTRICAL CONNECTIONS.

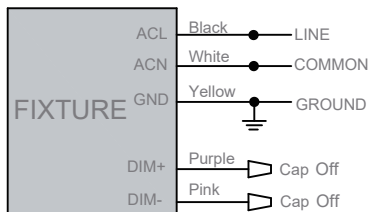
MAINTENANCE CAUTION



1. Review the wire connection before beginning, and make sure fixture is grounded properly.
2. For lighting controls, follow control instructions carefully.
3. Turn power off and wait for fixture to cool before performing maintenance.
4. Maintenance must be done by professionals.

WIRE CONNECTION

Universal Voltage permits operation at 120VAC thru 277VAC, 50 or 60 Hz.



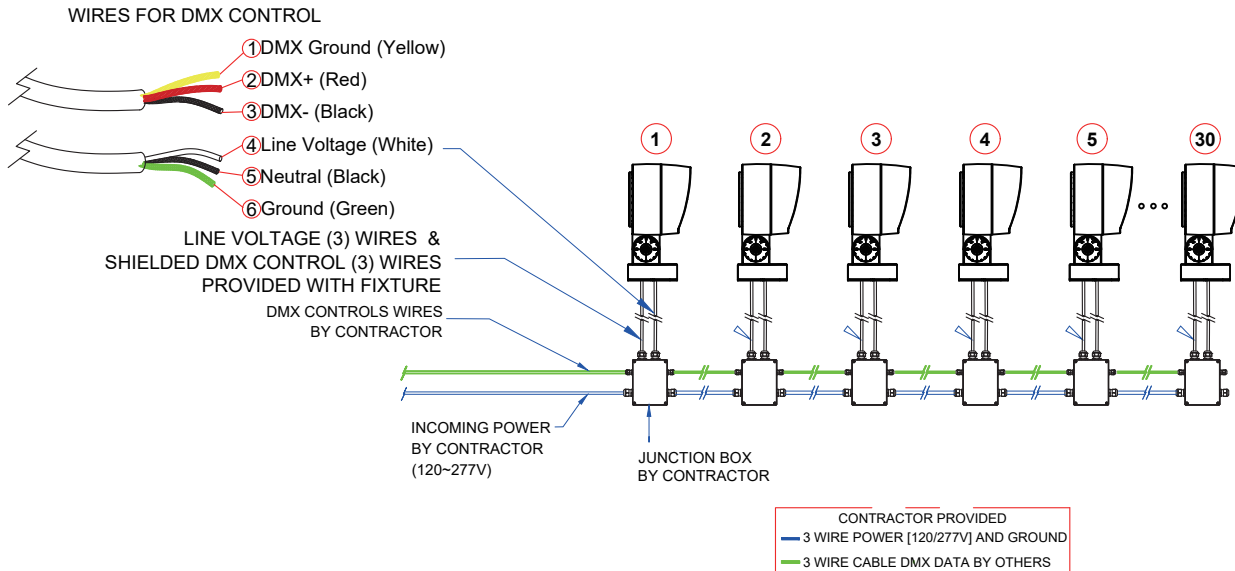
Make the following Electrical Connection:

- a). Connect the voltage supply line to ACL in Black.
- b). Connect the voltage supply Neutral to ACN in White.
- c). Connect Green ground lead to the supply ground lead.
- d). If 0-10V Dimming is used, connect the supply positive dimming lead to our 0-10V (Dim+) terminal.
- e). If 0-10V Dimming is used, connect the supply negative dimming lead to our 0-10V (Dim-) terminal.

WIRING DIAGRAM FOR HOLLY RGBW FLOOD LIGHT

TOTAL LENGTH PER OUT DOES NOT EXCEED 90m. [295ft.]

120 - 277 Vac. MAX: 30 DEVICES PER OUTPUT (MORE USING BOOSTERS OR SPLITTERS)



Installation instructions

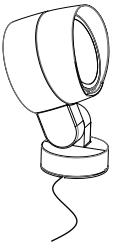

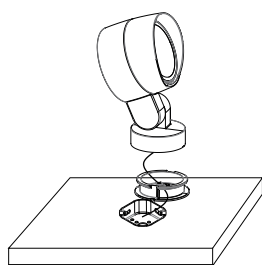
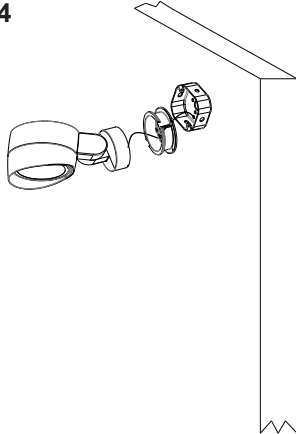
Matters needing attention

- Before the lamp is connected, please carefully check the input voltage, so as not to cause damage to the lamp.
- The installation and removal of lamps require professional technical personnel to operate.
- When you open the package, please check if there are signs of serious damage to the lamps.
- When connected, please cut off all lighting fixtures to connect the power supply, so as not to get an electric shock.
- This product can only be installed in dry or sunny weather.
- Can not remove the original structure, to avoid leakage of light.
- Glass with waterproof and dust, such as the discovery of broken glass, please replace the glass in a timely manner.
- Waterproof grade IP65 lamps, lamps shall not be installed in the low-lying or long-term water, electrical boxes need to be higher than the surface.
- Lighting outlet and on-site power supply cable connection needs to do IP68 protection level, so as not to affect the normal operation of the lamp.
- Please choose according to product appearance specifications corresponding to the power supply, power cable, not led lamp and metal halide lamp, sodium lamp and motor share a power supply circuit.
- Lamps are not recommended to be installed on the beach and corrosive chemical areas, so as not to cause corrosion of lamps and lanterns led to light damage.

Installation Instructions

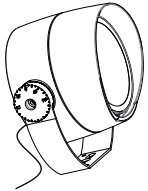
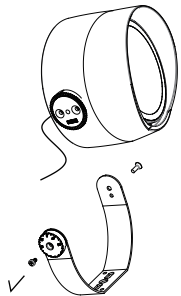




Surface Mount (Fixture with Canopy)

<p>1</p>  <p>Open the packaging and take out the light fixture. The junction box does not have waterproof performance.</p>	<p>2</p>  <p>Disassemble the 4-piece screws on the junction box to remove the mounting chassis.</p>	<p>3</p>  <p>Waterproof connection between lighting cable and on-site cable, with IP68 waterproofing, placed in the junction box.</p>	<p>4</p>  <p>Fix the lamp on the installation surface or Junction Box.</p>
--	---	--	--

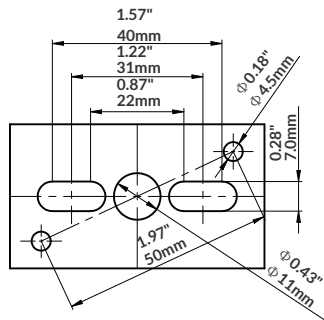


Yoke Mount

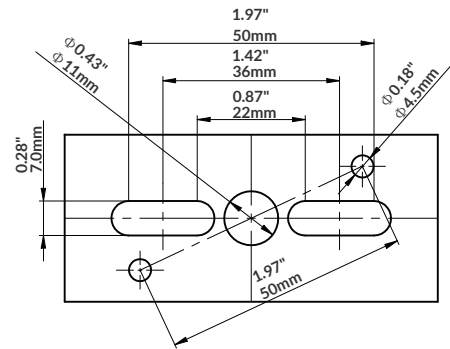
<p>1</p>  <p>Open the packaging and take out the light fixture, Shroud, and hex wrench.</p>	<p>2</p>  <p>Before installing the lighting fixture, it is necessary to remove the mounting bracket.</p>	<p>3</p>  <p>Fix the bracket onto the installation surface.</p>	<p>4</p>  <p>Fix the light fixture on the bracket and waterproof the connection of the power cord.</p>
---	--	--	--

Installation Instructions

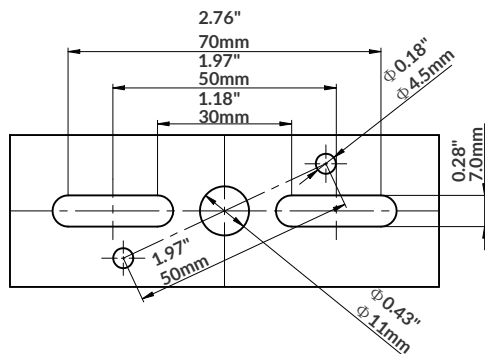
Yoke Mount



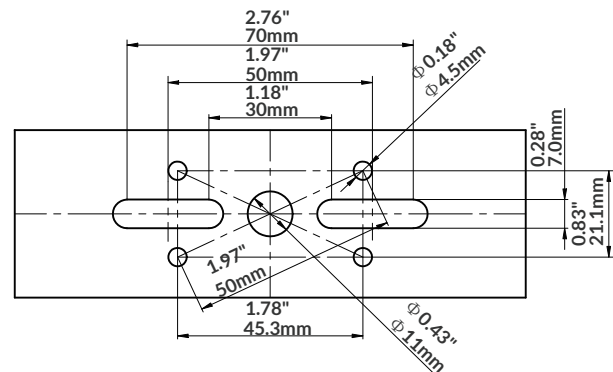
YOKO Mount
Drill Pattern for 26W



YOKO Mount
Drill Pattern for 42W



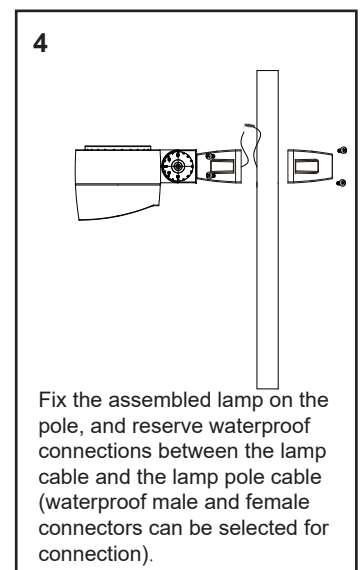
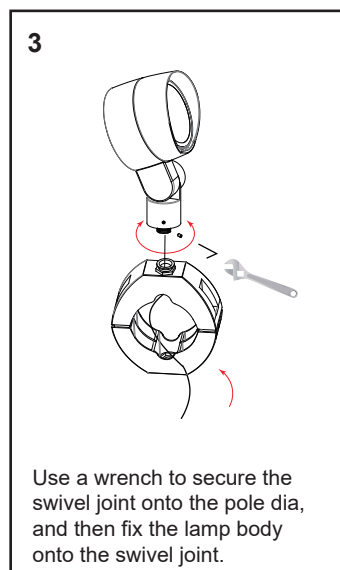
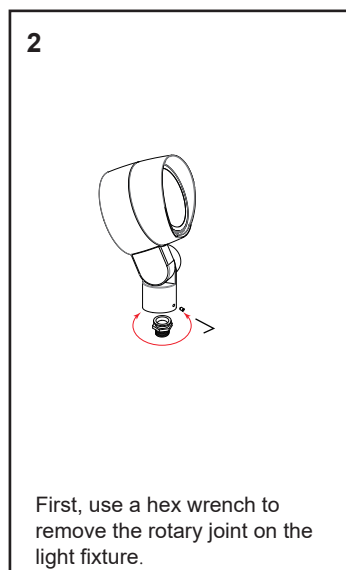
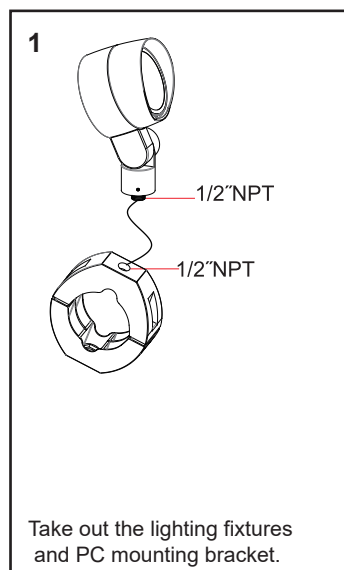
YOKO Mount
Drill Pattern for 80W&86W



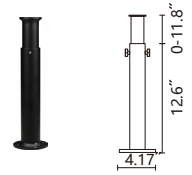
YOKO Mount
Drill Pattern for 112W&120W

Pole Clamp Mounting (Fixture with 1/2 Threaded Stem)

HOFL-PCP-4: Pole clamp for pole dia. 3.7\"-3.9\" for attaching one or two fixtures.
HOFL-PCP-5: Pole clamp for pole dia. 4.72\"-5.12\" for attaching one fixtures.



Installation Instructions



Adjustable Stem Mount (Stem with NPT 1/2" Threaded)

1

Take out the lighting fixtures and mounting bracket.

2

The lighting cable passes through the mounting bracket and is rotated and twisted together.

3

Waterproof connection between lighting cable and on-site cable, with IP68 waterproofing, Optional IP68 waterproof wiring male and female plugs.

4

Retractable stem can be raised up to 11.8.

Ground Stake Mount



1

Take out the lighting fixtures and PC mounting bracket.

2

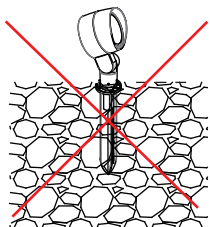
The lighting cable passes through the mounting bracket and is rotated and twisted together.

3

Waterproof connection between lighting cable and on-site cable, with IP68 waterproofing, Optional IP68 waterproof wiring male and female plugs.

4

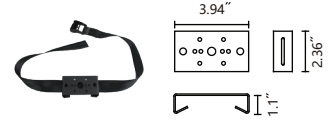
The mounting base must be 2" higher than ground level in case the base gets buried by soil when rainy..



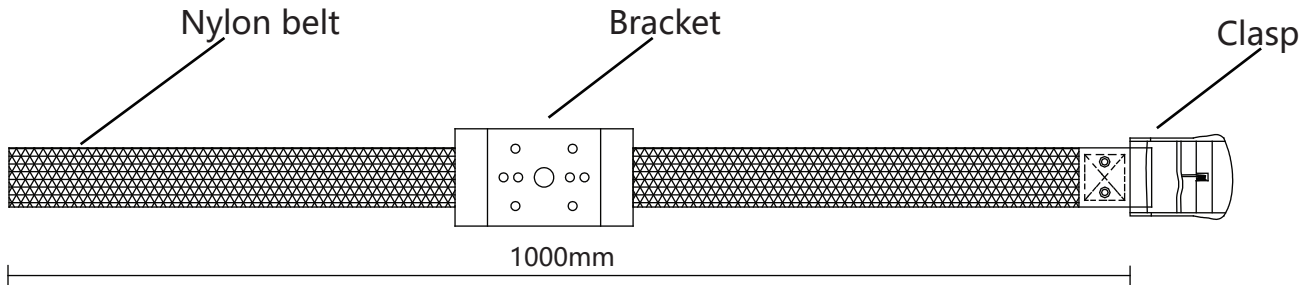
The mounting base must be 2" higher than ground level in case the base gets buried by soil when rainy.
The fixture or it's base can't be installed in pool.

Installation Instructions

Tree Strap Clamping Mount



Ref#: 20251023



Attention:

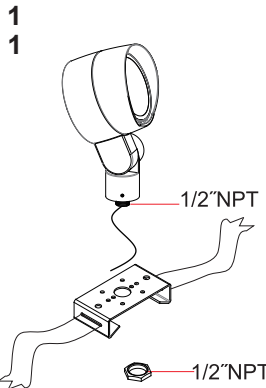
The standard length of the tree strap is 1M, suitable for the tree with a max diameter of 300MM.

Please change immediately when finding any damage or fracture during installation.

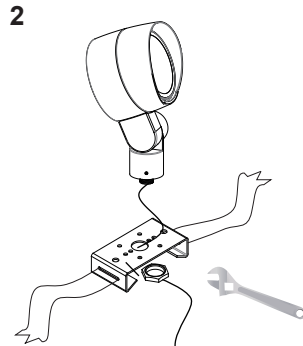
Please change immediately when any product without fastening function is founded during installation.

It can't be directly installed on the combustibles surface.

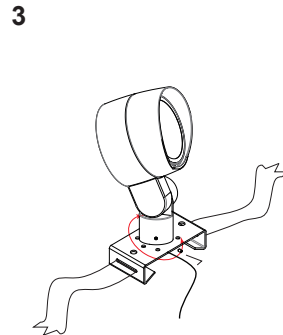
The length of the tree strap can be customized according to the object's diameter.



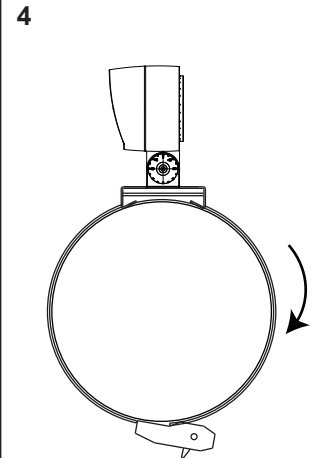
Open the packaging and take out the lamp, bracket, and nut.



The lamp outlet passes through the mounting bracket and nut, and the nut is locked and fixed with a wrench.



You can loosen the headless screw of the connecting seat with a hex wrench and rotate the projection direction.



Tie the assembled lighting fixtures to trees or cylinders, and fasten them with locking straps.