

2.3" MAGIC LED LINEAR LIGHT

Wall Mount, Direct and Indirect



This Magic LED linear fixture is a 2.3" wide linear architectural luminaire with a slim and discreet profile. The Magic is available in standard lengths of 2ft, 3ft, 4ft, 8ft and can be joined together in seamless runs of desired length. The Magic is an affordable indirect/direct linear LED luminaire. Various optical design delivers uniform, continuous lines of light. Different pattern joiners available for unlimited lighting pattern design.

TECHNICAL DATA

Length/Wattage

2ft	Selectable 10W/15W/20W
3ft	Selectable 15W/20W/30W
4ft	Selectable 20W/30W/40W
8ft	Selectable 40W/60W/80W

CRI	80Ra
CCT	Selectable 3000K/3500K/4000K

Driver	1-10V Dimming
Compatible Dimmer	LUTRON: DVSTV LEVITON: IP710

Input Voltage	120-277V, 50/60Hz
---------------	-------------------

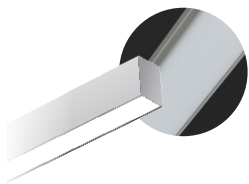
Operating Temp.	-4°F to 104°F (-20°C to 40°C)
-----------------	-------------------------------

Certifications	cULus conforms to UL Std. 1598 Cert. to CSA Std. C22.2 No.250.0 Suitable for damp locations RoHS compliant
----------------	---

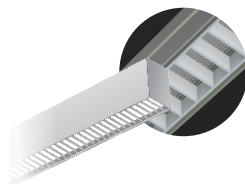
Power Factor	>0.9 at full load
--------------	-------------------

Harmonic Distortion	<20% at full load
---------------------	-------------------

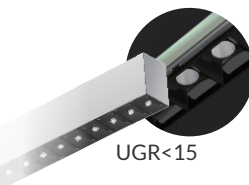
Projected Lifetime	L70 - 100,000 Hours
--------------------	---------------------



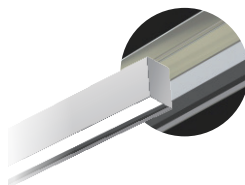
Flush Diffused Lens



Louver Lens



UGR<15
Micro Reflector



Regressed Lens

FEATURES

- Comes in lengths of 2ft, 3ft, 4ft, and 8ft.
- Direct and indirect light.
- Available with several lit joiner accessories for unlimited lighting pattern design.
- Professional lenses available in flush diffused, louver, micro reflector and regress lens.

2.3" MAGIC LED LINEAR LIGHT

Wall Mount, Direct and Indirect

ORDERING INFORMATION

EXAMPLE: MAG1223-SW1-WM-SD-FDL

MAG					
1. Series	2. Length	3. Width	4. Driver	5. CCT	6. Voltage
MAG	06 2ft 09 3ft 12 4ft 24 8ft Option¹ Desired System Length	23 2.3 Inch	BLANK Integral 1-10V Dimming	SW² Selectable 3000K 3500K 4000K ² <i>Single CCT³</i> 30 3000K 35 3500K 40 4000K	1 120-277V
	7. Mounting Options	8. Light Distribution	9. Lens Options	10. Finish	
	WM Wall Mount. <i>Please refer to the following accessory table to choose the mounting kits.</i>	SD <i>Following options available by dip switch</i> 100% Uplight 10% Down, 90% Up 30% Down, 70% Up 50% Down, 50% Up 70% Down, 30% Up 90% Down, 10% Up 100% Downlight ⁴	FDL⁵ Flush Diffused Lens ⁵ RGL⁵ Regressed ⁵ LVL⁵ Louver Lens ⁵ MRF⁵ Micro Reflector ⁵	BLANK White BK Black	

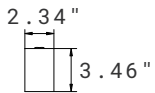
ORDERING INFORMATION

NOTE:

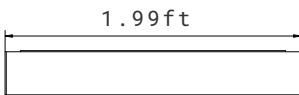
1. Individual fixtures, runs and configurations are supplied in nominal lengths to ensure full, even, illumination. If desired runs and configurations are needed, please tell us the details in advance. Then we can prepare the middle run and end run in factory for easy installation, or end user need to modify the standard individual fixtures into middle run and end run.
2. The default CCT setting is 4000K.
3. Single CCT is only for Micro Reflector.
4. Default setting is 100% downlight.
5. If the joined length exceeds 8ft, only continuous Roll-Out Lens can be used.
RGL, LVL and MRF lens will ask long lead time for 2ft, 3ft and 8ft. Please check with Customer Service in advance.
MRF is only available in 4ft and single CCT.

SPECIFICATION

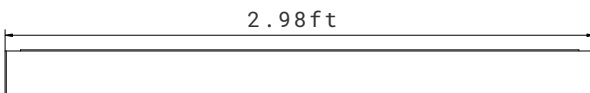
Side View



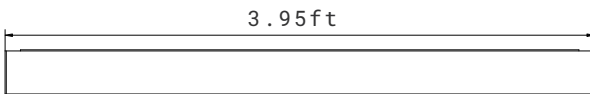
2ft



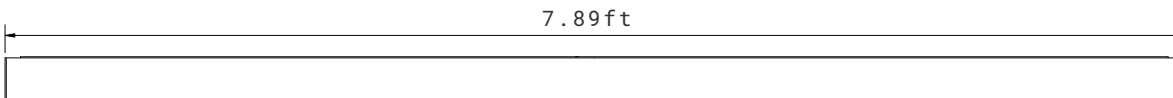
3ft



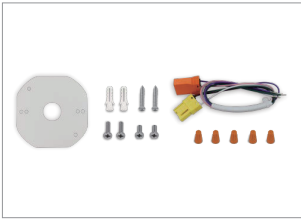
4ft



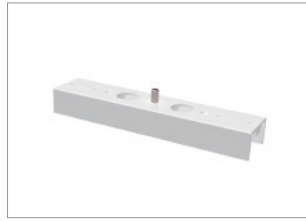
8ft



ACCESSORIES (ORDERED SEPARATELY AND FIELD INSTALLED)



MAG-SMK
Surface and Wall Mount Kits.



MAG23-LINE
Line Shape Joiner.



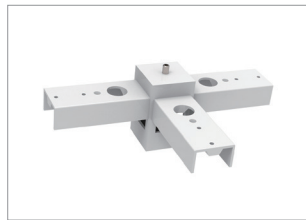
MAG23-ROL¹
Continuous Roll-Out Lens (42ft).¹



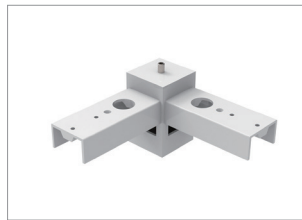
MAG23-Hex Hub
120° Hex-Hub Joiner.



MAG23-CROSS
Cross Shape Joiner.



MAG23-T
T Shape Joiner.



MAG23-L
90° L Shape Joiner.



MAG23-Y
Y Shape Joiner.



RC-100²
Remote Control for Microwave Motion Sensor.²



AAL-EBU-AC08D-YYY³
Remote 8W LED
Emergency Battery
Back-up 120-347VAC.

AAL-EBU-AC25D-YYY³
Remote 25W LED
Emergency Battery
Back-up 120-347VAC.

NOTE:

1. For joined lengths exceeding 8ft, only the Continuous Roll-Out Lens may be used.
2. Microwave dimming sensor, for mounting height 20ft (6m) max. Dimming default setting is Bi-Level dim and dimming to 50%. Besides, daylight sensor default setting is disable. If need other dimming levels such as 10% or 30%, ON/OFF function and daylight sensor function, please consult with customer service in advance.
3. The 8W EBU supports up to 60W total lighting load. The 25W EBU supports up to 150W total lighting load. The dimming control wire must be connected. Emergency battery back-up is for ambient temperatures of 32°F -95°F (0°C -35°C).

PERFORMANCE DATA

Lumen values are measured by third party certified laboratories performed in accordance with IESNA LM-79-08 as well as Lighting Facts listed.

Lens	Length	Width	Wattage Selectable	Voltage	Lumen Output			Installation	Controls (optional)
					Low level	Medium level	High level		
Flush Diffused Lens	2ft/ 3ft/ 4ft/ 8ft	2.3"	10W/15W/20W selectable 15W/20W/30W selectable 20W/30W/40W selectable 40W/60W/80W selectable	120-277V (Int.Driver)	575lm/ft, 5W/ft	860lm/ft, 7.5W/ft	1150lm/ft, 10W/ft	Wall Mount	Emergency Battery Back-up
Louver Lens	2ft/ 3ft/ 4ft/ 8ft	2.3"	10W/15W/20W selectable 15W/20W/30W selectable 20W/30W/40W selectable 40W/60W/80W selectable	120-277V (Int.Driver)	450lm/ft, 5W/ft	675lm/ft, 7.5W/ft	900lm/ft, 10W/ft		
Micro Reflector	4ft	2.3"	10W/15W/20W selectable 15W/20W/30W selectable 20W/30W/40W selectable 40W/60W/80W selectable	120-277V (Int.Driver)	575lm/ft, 5W/ft	860lm/ft, 7.5W/ft	1150lm/ft, 10W/ft		
Regressed Lens	2ft/ 3ft/ 4ft/ 8ft	2.3"	10W/15W/20W selectable 15W/20W/30W selectable 20W/30W/40W selectable 40W/60W/80W selectable	120-277V (Int.Driver)	450lm/ft, 5W/ft	710lm/ft, 7.5W/ft	950lm/ft, 10W/ft		

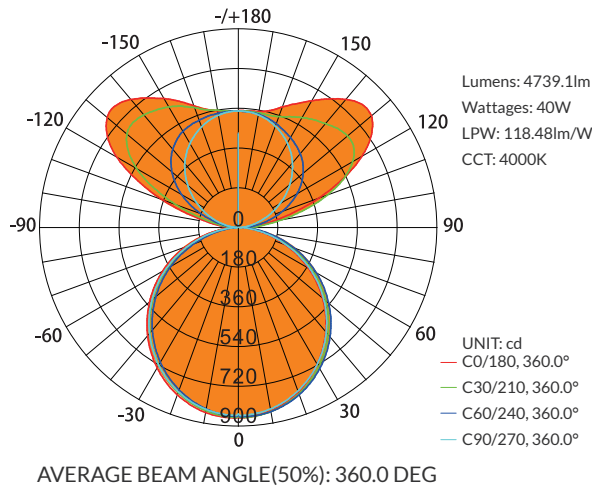
NOTE:

- Above are subject to 3500K with 50% up and 50% down lighting distribution. All efficacy is $\pm 5\%$ base on different CCT and lighting distributions. Check the IES file to gain the accurate data. For 3000K fixtures, use 0.96 multiplier; for 4000K fixtures, use 1.04 multiplier.

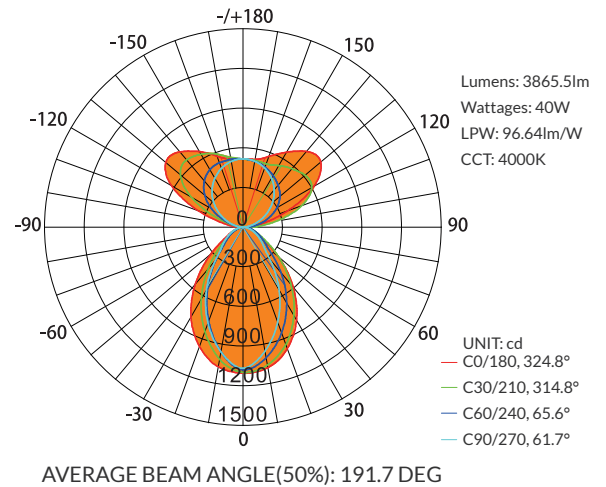
PHOTOMETRY

All published luminaire photometric testing performed to IESNA LM-79-08 standards by a NVLAP certified laboratory. IESNA LM-79-08 specifies the entire luminaire as the source resulting in a fixture efficiency of 100%. Results may vary per actual order.

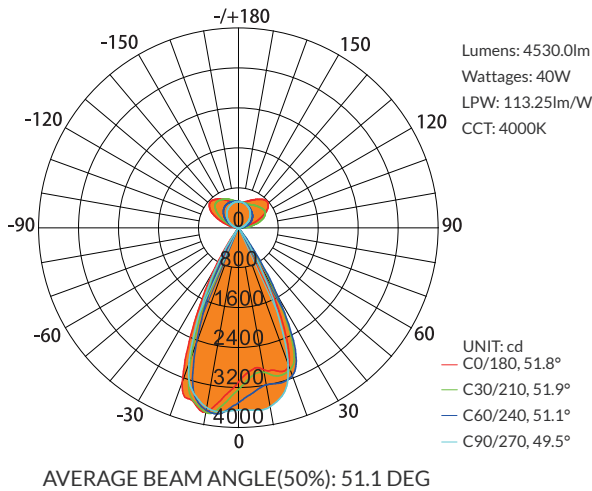
4ft/Diffuser/50% Up and 50% Down/4000K



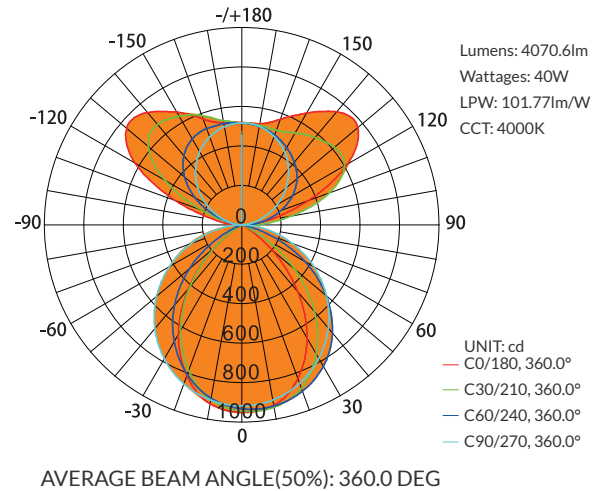
4ft/Louver/50% Up and 50% Down/4000K



4ft/Micro Reflector/50% Up and 50% Down/4000K



4ft/Deep Regressed/50% Up and 50% Down/4000K



NOTE:

1. These distribution diagram is tested based on suspended mount.

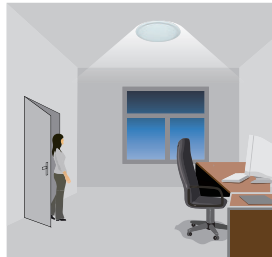
MICROWAVE DIMMING SENSOR SETTING (120-277V)

3-step dimming function

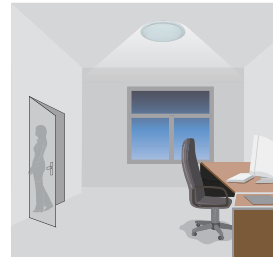
The sensor is an innovative motion sensor, switch on the light on detection of movement, and switch off after a hold time when there is no motion detected.



1. No motion detected, all lamps switch off.



2. Any movement is detected from any direction, all lamps synchronously switch on.



3. No motion is detected in detection area, all lamps synchronously dim to a low light level after hold time.



4. After stand-by period, the lamps switch off if no movement is detected in the detection zone.

MICROWAVE DIMMING SENSOR SETTING (120-277V)

By selecting the combination on the DIP switch, sensor data can be precisely set for each specific application. The sensor setting also can be done by a remote control (RC-100) which need to be bought separately.

	1	2	
I	↓	↓	20%
II	↓	↑	50%
III	↑	↓	75%
IV	↑	↑	100%

Sensitivity

Sensitivity can be reduced by selecting the combination on the DIP switches to fit precisely each application.

Default Setting: 100%

	3	4	
I	↓	↓	10s
II	↓	↑	1min
III	↑	↓	5mins
IV	↑	↑	15mins

Hold time

Refers to the time period the lamp remains at 100% illumination after no motion detected.

Default Setting: 15mins

	5	6	
I	↓	↓	☀
II	↓	↑	10 lux
III	↑	↓	30 lux
IV	↑	↑	50 lux

Daylight sensor

The sensor can be set to only allow the lamp to illuminate below a defined ambient brightness threshold.

Default Setting: ☀ (Disable)

	7	8	
I	↓	↓	0%
II	↓	↑	10%
III	↑	↓	30%
IV	↑	↑	50%

Stand-by dimming level

The low light level you would like to have after the hold time in the long absence of people.

Default Setting: 50%

MICROWAVE DIMMING SENSOR SETTING (120-277V)

	9	10	
I	↓	↓	+∞
II	↓	↑	1min
III	↑	↓	30mins
IV	↑	↑	60mins

Stand-by time

Refers to the time period the lamp remains at a low light level before it completely switches off in the long absence of people. When set to “ +∞ ” mode, the low light is maintained until motion is detected.

Default Setting: 30mins

WARRANTY

5 years limited warranty.

Specifications subject to change without notice.

Ref#: 20251226