

VISION LED STRIP

Wide Size Ideal To Replace The 2 Lamp Fluorescent Strip



Option
End-side Cable Installed.



Above All Lighting's Vision LED Strip Light has a sleek design with a diffuser lens. Optical accessories include EBU and motion sensor. It can be used in stairwells, warehouses, offices, garages, shop displays, and other commercial applications.

TECHNICAL DATA

Length	2ft, 3ft, 4ft, 8ft
Wattage	20W, 30W, 45W, 60W, 80W, 90W
CRI	80
CCT	3000K, 3500K, 4000K
Driver	0-10V Dimming, Class 2 driver
Input Voltage	120-347V, 50/60Hz
Operating Temp.	-4°F to 104°F (-20°C to 40°C) * Maximum temperture is 95°F (35°C) for 4ft, 90W
Certifications	cETLus conforms to UL Std. 1598 Cert. to CSA Std. C22.2 No.250.0 Suitable for damp locations DLC Premium ¹ RoHs compliant
Power Factor	>0.9 at full load
Harmonic Distortion	<20% at full load
Projected Lifetime	L70 - 156,000 Hours
IK Rating	IK10 rated

Notes:

1. DLC premium is for 4ft 30W and 45W with frosted lens.

FEATURES

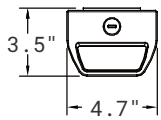
- 8% up-light and no glare.
- Quick and Easy to wire and install.
- Seamless connection.
- Built-in sensor.
- EBU backup available.
- Ceiling & wall surface mounted, suspension mounted.

VISION LED STRIP

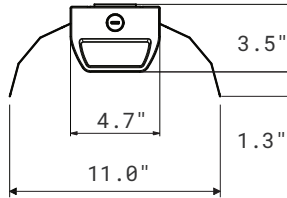
Wide Size Ideal To Replace The 2 Lamp Fluorescent Strip

SPECIFICATION

Side View

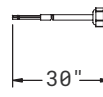


With Two Reflectors



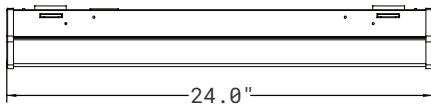
Option

End-side cable installed.



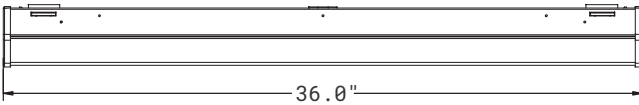
2ft

Net. Weight: 4.5 lbs



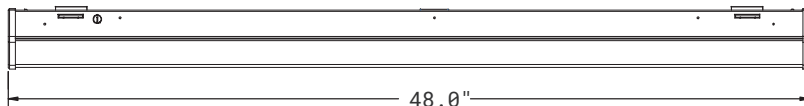
3ft

Net. Weight: 5.9 lbs



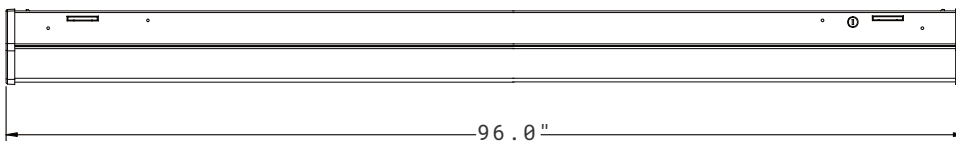
4ft

Net. Weight: 7.5 lbs



8ft

Net. Weight: 13.5 lbs



Wide Size Ideal To Replace The 2 Lamp Fluorescent Strip



ABOVE ALL
www.AboveAllLighting.com

ORDERING INFORMATION

EXAMPLE: SSTR12D40358-MSW

Strip					
1. Series	2. Dimension	3. Dimmable	4. Wattage	5. LED	6. CCT
STR	06 2ft	D 0-10V Dimmable	20 20W	LED	30 3000K
	09 3ft ⁴	D 0-10V Dimmable	26 30W		35 3500K
	12 4ft	D 0-10V Dimmable	20 20W 30 30W 45 45W 60 60W ⁵ 90 90W ⁵		40 4000K
	24 8ft	D 0-10V Dimmable	60 60W 85 80W		
	7. Voltage	8. Lens	9. Control		
	8 120-347V	F Frosted lens ³ C Clear lens ³	BLANK None MSW Microwave Dimming Sensor ^{1&7} EBU Emergency Battery Back-up ²		

VISION LED STRIP

Wide Size Ideal To Replace The 2 Lamp Fluorescent Strip

Option



2ESCI

2ft End-side Cable Installed, white, no plug.

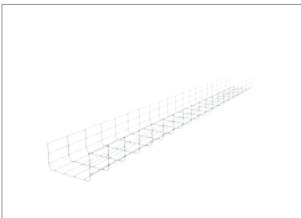
NOTE:

1. Standard product does not include the end-side cable. If need end-side cable installed please ask Customer Service.

NOTE:

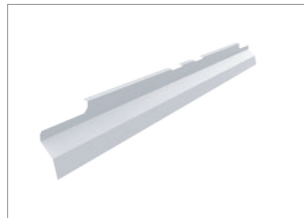
1. Microwave dimming sensor for mounting height 20ft max. Dimming default setting is Bi-Level dim, 50% on vacancy and 100% on Occupancy. Daylight sensor default set to disabled. Other settings such as ON/OFF function can be set by the remote controller. Please consult with customer service for details.
2. Emergency battery back-up is not available for 4ft@ 90W. It is for ambient temperatures of 32°F to 95°F (0°C to 35°C). The emergency test button is pre-installed on the fixture. The standard emergency test button is plastic. Metal emergency test button is optional. The EBU is Title 20 compliant. Emergency battery backup is available in 8W with 1360lm and works for a minimum of ninety (90) minutes.
3. Frosted lens is standard. Please contact Customer Service for the lead time of clear lens.
4. 3ft is without DLC. Please contact Customer Service for lead time of 3ft vision strip.
5. 4ft @ 90W are not available for Emergency Battery Back-up. Maximum temperature is 86°F (30°C) for 4ft@ 60W Emergency Battery Back-up.
6. Surface mount is standard. If quick surface mount or V-hook mount is needed, please order the mounting brackets separately. Please check the accessory table for details.
7. MSW can read vibration as movement and trigger the sensor despite no physical movement in the sensor field. As such, MSW should not be installed in rooms that experience significant levels of vibration.
8. Standard Finish is White. Custom colors might be available for an additional fee. Please check with Customer Service for more information.

ACCESSORIES (ORDERED SEPARATELY)



90237
STRP06-WG
Wire guard for 2ft strip.

90238
STRP12-WG¹
Wire guard for 4ft and 8ft strip.



90240
STRP06-RF
Reflector 2ft strip.

90242
STRP12-RF²
Reflector 4ft and 8ft strip.



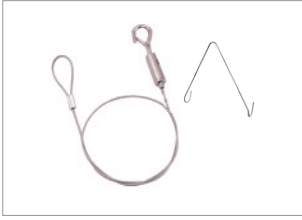
90243
STRP-VH⁴
V-hooks for strip.



90264
STRP-QSMK³
Quick surface mount kit for ceiling and wall mount (a pair).

VISION LED STRIP

Wide Size Ideal To Replace The 2 Lamp Fluorescent Strip



90759
STR-PMK
Pendant Mount Kits for
strip (a pair).



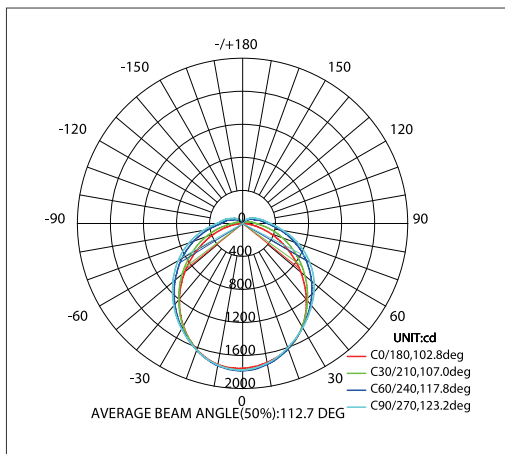
90576
MH10
Remote control for MSW.

NOTE:

1. If for 8ft please order two pieces.
2. If this reflector will be installed at one side, then one piece for 4ft and two pieces for 8ft. If this reflector will be installed at both two sides, then two pieces for 4ft and four pieces for 8ft.
3. Soft chain mount with V-hooks is the best choice if fixture is with MSW or MSWO and needed to be installed on a ceiling of long time vibration.

PHOTOMETRY

All published luminaire photometric testing performed to IESNA LM-79-08 standards by a NVLAP certified laboratory. IESNA LM-79-08 specifies the entire luminaire as the source resulting in a fixture efficiency of 100%. Results may vary per actual order.



PERFORMANCE DATA

Lumen values are estimated with LED data sheet.

Frosted Lens

Wattage	Lumen Output	Measured Wattage	Size	CRI	AC Input 120V	CCT	LPW
20W	3000lm	20W	2ft	80	0.18A	5000K	150
30W	4500lm	30W	3ft	80	0.24A	5000K	150
20W	3000lm	20W	4ft	80	0.18A	5000K	150
30W	4500lm	30W	4ft	80	0.28A	5000K	150
45W	6900lm	46W	4ft	80	0.41A	5000K	150
60W	9000lm	60W	4ft	80	0.50A	5000K	150
90W	14000lm	92W	4ft	80	0.77A	5000K	152
60W	9000lm	60W	8ft	80	0.50A	5000K	150
80W	11600lm	80W	8ft	80	0.67A	5000K	145

Clear Lens

Wattage	Lumen Output	Measured Wattage	Size	CRI	AC Input 120V	CCT	LPW
20W	3160lm	20W	2ft	80	0.18A	5000K	158
30W	4740lm	30W	3ft	80	0.24A	5000K	158
20W	3160lm	20W	4ft	80	0.18A	5000K	158
30W	4740lm	30W	4ft	80	0.28A	5000K	158
45W	7268lm	46W	4ft	80	0.41A	5000K	158
60W	9480lm	60W	4ft	80	0.50A	5000K	158
90W	14500lm	92W	4ft	80	0.77A	5000K	158
60W	9480lm	60W	8ft	80	0.50A	5000K	158
80W	12240lm	80W	8ft	80	0.67A	5000K	153

Projected LED Lumen Maintenance

Data references the extrapolated performance projections for the LED strip in a 77°F ambient, (tested per IESNA LM-80-08 and projected per IESNA TM-21-11).

Operating Hours	10,000	19,000	38,000	156,000
Lumen Maintenance Factor	0.98(L98)	0.96(L96)	0.92(L92)	0.70(L70)

Lumen Ambient Temperature (LAT) Multipliers

Use these factors to determine relative lumen output for average ambient temperature from -4°F to 104°F (-20°C to 40°C).

Ambient		
Celsius	Fahrenheit	Multiplier
0	32	1.06
10	50	1.03
20	68	1.01
25	77	1.00
30	86	0.99
40	104	0.97



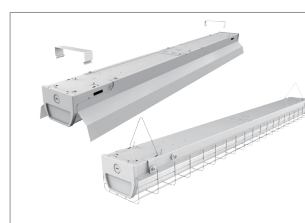
Built-in sensor.



EBU backup available. The standard emergency test button is plastic. Metal emergency test button is optional.



Easy to wire. End and back side wire entries available, meet different junction box locations.



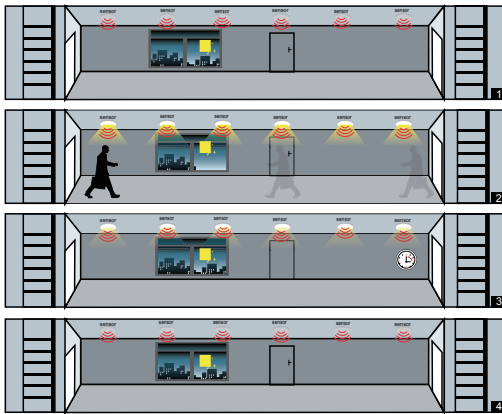
Easy to install. Quick ceiling & wall surface mount and V-hook mount optional, no need to open the housing.

MICROWAVE DIMMING SENSOR

Dimming Function

3-Step Dimming Function

The sensor is an innovative motion sensor, switch on the light on detection of movement, and switch off after a hold time when there is no motion detected.



1. No motion detected, all lamps switch off.
2. Any movement is detected from any direction, all lamps synchronously switch on.
3. No motion is detected in detection area, all lamps synchronously dim to a low light level after hold time.
4. After stand-by period, the lamps switch off if no movement is detected in the detection zone.

MICROWAVE DIMMING SENSOR SETTING

Sensor data can be precisely set for each specific application by a remote controller which need to be bought separately.

Detection area

Detection area can be reduced by selecting the combination on the remote controller to fit precisely each application.
Optional Setting: 100%/75%/50%/25%.

Default Setting: 100%

Hold time

Refers to the time period the lamp remains at 100% illumination after no motion detected.
Optional Setting: 5s/30s/1min/3min/5min/10min/20min/30min.

Default Setting: 20mins

Stand-by period

Refers to the time period the lamp remains at a low light level before it completely switches off in the long absence of people.
When set to "+∞" mode, the low light is maintained until motion is detected.
Optional Setting: 0s/10s/1min/3min/5min/10min/30min/+∞.

Default Setting: +∞

Notes: If just need ON/OFF function, please set the stand-by period in "OS" mode by the remote controller.

VISION LED STRIP

Wide Size Ideal To Replace The 2 Lamp Fluorescent Strip



ABOVE ALL

www.AboveAllLighting.com

Daylight sensor

The sensor can be set to only allow the lamp to illuminate below a defined ambient brightness threshold. When set to Disable mode, the daylight sensor will switch on the lamp when motion is detected regardless of ambient light level. 50lux, 30lux: twilight operation, 10lux, 5lux: darkness operation only. Note that daylight sensor is active only when lamp totally switches off.

Optional Setting: 5lux/15lux/30lux/50lux/100lux/150lux/Disable.

Default Setting: Disable

Stand-by dimming level

The low light level you would like to have after the hold time in the long absence of people.

Optional Setting: 10%/20%/30%/50%.

Default Setting: 50%

WARRANTY

5 years limited warranty.

Specifications subject to change without notice

Note:

Please refers to the instruction manual for motion sensor default setting.

Ref#: 20251209