



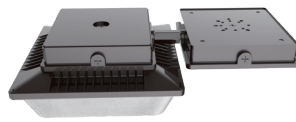
The LS series garage lights are the high-performance solution for the most demanding applications within a patented air cooling design. With an expected service life of L70-175,000 hours and an easy-install design, it provides an affordable initial cost and low total cost of ownership. With high lumen packages and precision refractive optics, the LS series can meet superior illumination performance requirements.

## TECHNICAL DATA

CRI	80
CCT	3000K, 4000K, 5000K
Input Voltage	120-277VAC, 50/60Hz 347/480VAC, 50/60Hz
Operating Temp.	-40°F to 104°F (-40°C to 40°C)
Driver	
Standard	0-10V Dimming
Certifications	cETLus listed RoHS compliant Suitable for wet locations DLC premium listed
Power Factor	>0.98
Harmonic Distortion	<20% at full load
Projected Lifetime	L70 - 175,000 Hours
IP Rating	IP65 rated



**FSP-211**  
Multi-level Motion Sensor.



**EBU**  
Emergency battery back-up.



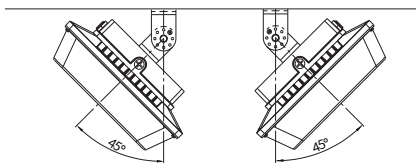
Surface Mount



1/2 NPT  
Pendant Mount



Trunnion Mount



15-degree increments  
Fully adjustable to 45 degrees.

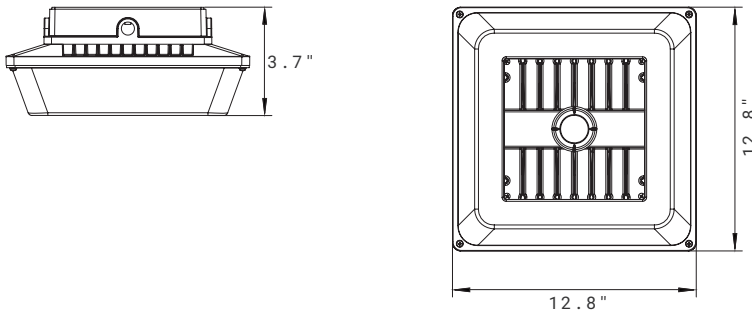
## FEATURES

- **Superior Optical Performance:** Provides 11% uplight and superior low-glare illumination with efficacy up to 136 LPW.
- **Flexible Installation & Control:** Includes a junction box for easy surface or pendant mounting and offers optional sensors and EBU.

## SPECIFICATION

Dimension: L12.8" W12.8" H3.7"

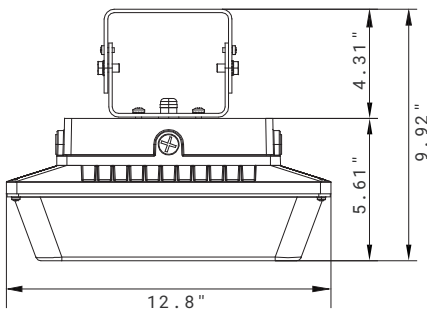
Max. Weight: 13.5 lbs



### With Trunnion

Dimension: L12.8" W12.8" H9.92"

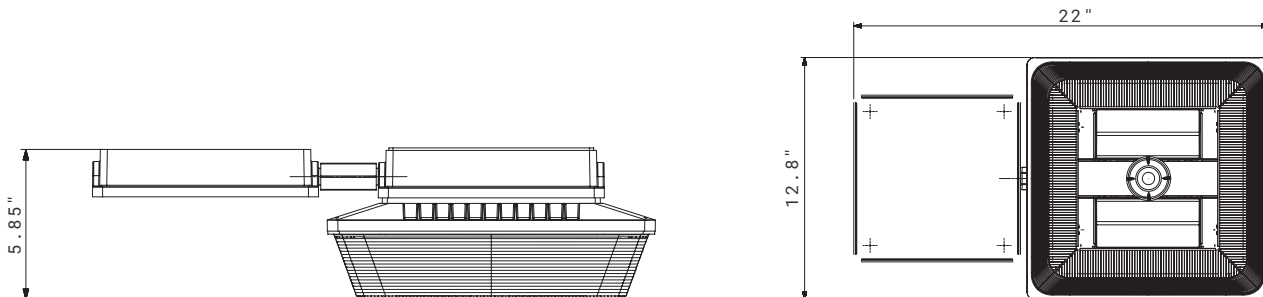
Max. Weight: 14.3 lbs



### With EBU

Dimension: L22" W12.8" H5.85"

Max. Weight: 17.3 lbs



## ORDERING INFORMATION

EXAMPLE: LSPKG35501P-MS-L2B

LSPKG						
1. Series	2. Wattage	3. CCT	4. Voltage	5. Series	6. Controls	7. MS Lens <sup>7</sup>
LSPKG	<b>35</b> 35 W  <b>65</b> 70 W	<b>30</b> 3000K  <b>40</b> 4000K  <b>50</b> 5000K	<b>1</b> 120-277 V  <b>6</b> 347/480V <sup>4</sup>	<b>P</b> DLC Premium	<b>MS</b> Wattstopper Sensor <sup>5</sup>  <b>EBU8</b> Emergency Battery Backup <sup>1</sup>  <b>EBU6</b> Emergency Battery Backup <sup>6</sup>	<b>L2B</b> L2 Lens Black <sup>2</sup>  <b>L7B</b> L7 Lens Black <sup>3</sup>

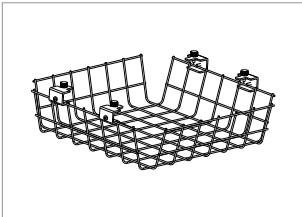
### NOTE:

- EBU8 is for 70W. In the event of a power failure, the battery backup units switch to emergency mode (about 1050 lumen output) and operates the fixture for a minimum of 90 minutes. The EBU is Title 20 compliant.
- Default setting for 35W.
- Default setting for 70W.
- 347/480V is not available for 35W.
- Wattstopper Sensor is not available for 347/480V.
- EBU6 is for 35W. In the event of a power failure, the battery backup units switch to emergency mode (about 780 lumen output) and operates the fixture for a minimum of 90 minutes. The EBU is Title 20 compliant.
- Dark Bronze finish is standard. Custom colors might be available for an additional fee. Please check with Customer Service for more information.

ACCESSORIES (ORDERED SEPARATELY AND FIELD INSTALLED)



**90420**  
**LSPKG-TR**  
Trunion for LSPKG.



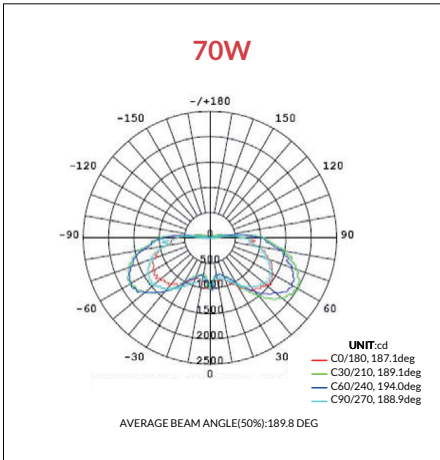
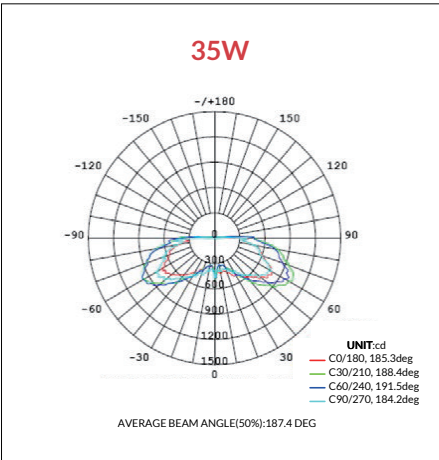
**90196**  
**LSPKG Wire Guard**



**90137**  
**FSIR-100**  
Wattstopper Remote Controller.

PHOTOMETRY

All published luminaire photometric testing performed to IESNA LM-79-08 standards by a NVLAP certified laboratory. IESNA LM-79-08 specifies the entire luminaire as the source resulting in a fixture efficiency of 100%. Results may vary per actual order.



PERFORMANCE DATA

Lumen values are measured by third party certified laboratories performed in accordance with IESNA LM-79-08 as well as Lighting Facts listed.

Nominal Wattage	Lumen Output	AC Input 120V	Measured Wattage	CRI	CCT	LPW
35W	4528lm	0.32A	35W	>80	5000K	130
70W	9172lm	0.60A	68W	>80	4000K	136

## Lumen Ambient Temperature (LAT) Multipliers

Use these factors to determine relative lumen output for average ambient temperature from -40°F to 104°F (-40°C to 40°C).

Ambient		
Celsius	Fahrenheit	Multiplier
0	32	1.02
10	50	1.01
20	68	1.00
25	77	1.00
30	86	1.00
40	104	0.99

## Projected LED Lumen Maintenance

Data references the extrapolated performance projections for the LED LS garage light in a 77°F ambient, (tested per IESNA LM-80-08 and projected per IESNA TM-21-11).

Operating Hours	0H	5,000H	10,000H	30,000H	175,000H
Lumen Maintenance Factor	1.0	0.99(L99)	0.98(L98)	0.92(L92)	0.70(L70)

## LS GARAGE LIGHT RATED LIFE (BASED ON ISTMT TEST REPORT)

Ambient Temp in	73°F	104°F	113°F	122°F
36W Rated Life	78,000H	76,000H	57,000H	40,000H
70W Rated Life	78,000H	65,000H	63,000H	50,000H

## BUG RATING TABLE

Performed to IESNA LM-79-08 standards by a NVLAP accredited laboratory.

Model	BUG Rating
LSPKG35501P	B2-U3-G3
LSPKG65501P	B3-U4-G4

CONTROL

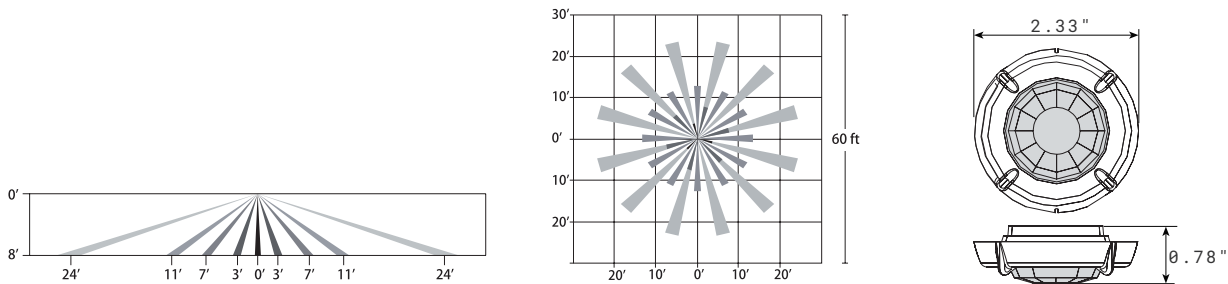
Motion Sensor:

The passive infrared (PIR) outdoor sensor raises or lowers the electric lighting level to high, low or off based on motion and/or daylight contribution.

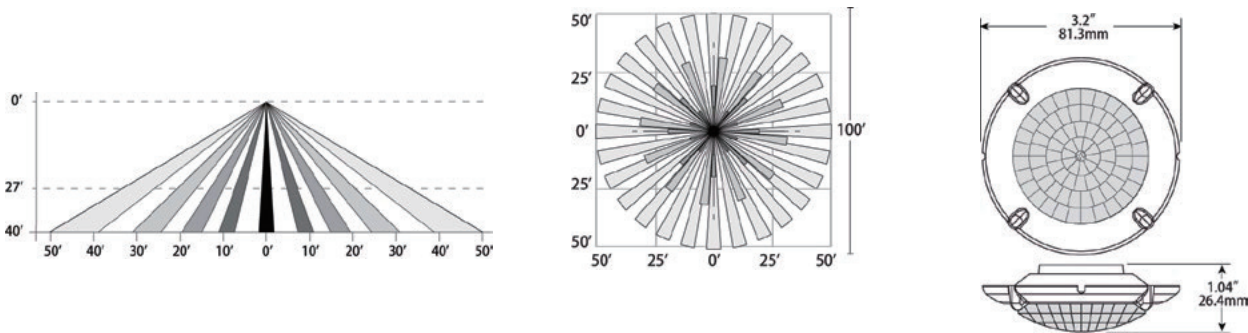
Typically, once the sensor stops detecting movement and the time delay elapses, lights will first fade to low mode, and eventually switch off. When motion is detected, the sensor ramps the light level to high mode unless the daylight contribution is sufficient. The integral photocell can also switch the lights on and off for dusk to dawn control, so that lighting remains on overnight even without motion detection.

COVERAGE CHOICE

L2



L7



L2B	Black	360° lens, maximum coverage 48' diameter from 8' height
L7B	Black	360° lens, maximum coverage 100' diameter from 40' height

NOTE:

- 1. The default configuraion of ABOVE ALL is L28 for 35W and L78 for 65W (Special request for coverage choice, please ask customer service).

WARRANTY

5 years limited warranty.  
Specifications subject to change without notice.