



The NOVA LED Commercial Downlights are available in 4ft, 6 ft, 8 ft and 10 ft with up to 40W. The integral junction box and choice of trim feature, adds to the flexibility of this downlight. Butterfly clips make for easy-fit installation whether new construction or retrofit. The integral junction box eliminates the need for a traditional recessed housing and the complete fixture mounts directly into the ceiling. It is suitable for commercial and public places and elegantly decorates the ambience, such as shopping mall, hospital, airport, hotel lobby etc.

TECHNICAL DATA

Wattage	
20SP	Selectable 10W/15W/20W
40SP	Selectable 27W/34W/40W
CCT	
Selectable 3000K/3500K/4000K	
default setting: 3000K	
Driver	1-10V dimming is standard
CRI	80
Input Voltage	120-347V, 50/60Hz
Projected Lifetime	L70-100,000 Hours
Operating Temp.	-4°F to 104°F (-20°C to 40°C)
Certifications	
cULus conforms to UL Std. 1598	
Cert. to CSA Std. C22.2 No.250.0	
RoHS compliant	
Suitable for damp locations	
Power Factor	>0.9 at full load
Harmonic Distortion	<20% at full load

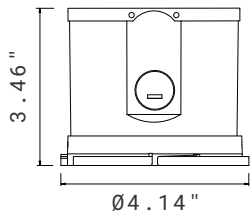
FEATURES

- 4ft, 6ft, 8ft and 10ft trim size options.
- Various changable trim design.
- Available in round, square, round wall wash and square wall wash trims.
- Twist-lock modular design.
- Integrated J-box for direct wire, eliminated recessed can.
- CCT and wattage selectable.
- New construction frame kit available.

SPECIFICATION

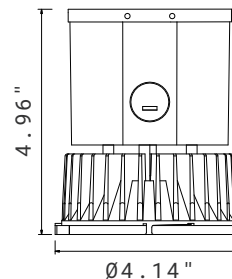
Engine Dimension

20SP



10W IC, 15W IC, 20W IC

40SP



40W NON-IC

Trim Dimension

Color Treatment

1. For white and metal ring, the other part of trim including reflector is aluminum natural color with anodizing treatment.
2. The front ring and reflector are rose color treatment for rose trim.

Round Trims

4"

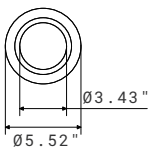
Cut-hole Dimensions: 4.7"-5.2"



White Ring

Metal Ring

Rose Trim



6"

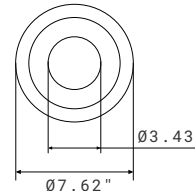
Cut-hole Dimensions: 6"-7.3"



White Ring

Metal Ring

Rose Trim



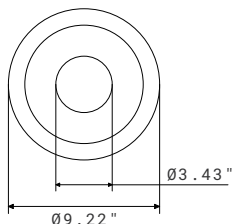
8"

Cut-hole Dimensions: 7.4"-8.9"



White Ring

Metal Ring

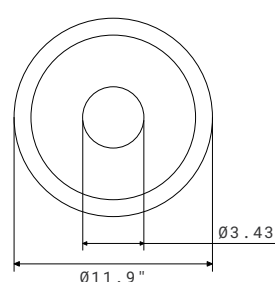


10"

Cut-hole Dimensions: 9.5"-10.8"



White Ring



SPECIFICATION

Trim Dimension

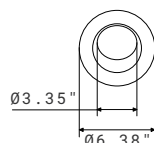
Round Wall Wash Trims

4"

Cut-hole Dimensions: 5.3"-6"



White Ring

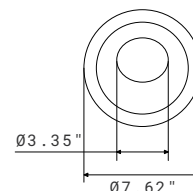


6"

Cut-hole Dimensions: 6"-7.3"



White Ring



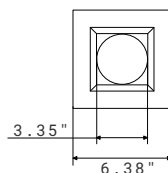
Square Trims

4"

Cut-hole Dimensions: 5.3"-6"

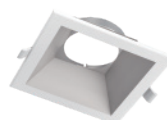


White Ring

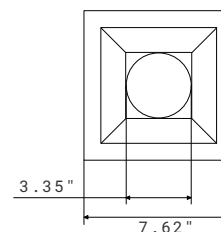


6"

Cut-hole Dimensions: 6"-7.3"



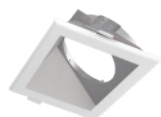
White Ring



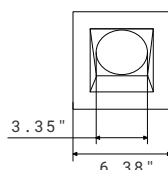
Square Wall Wash Trims

4"

Cut-hole Dimensions: 5.3"-6"



White Ring

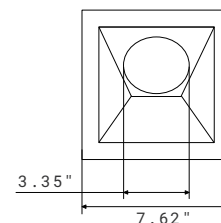


6"

Cut-hole Dimensions: 6"-7.3"



White Ring



ORDERING INFORMATION

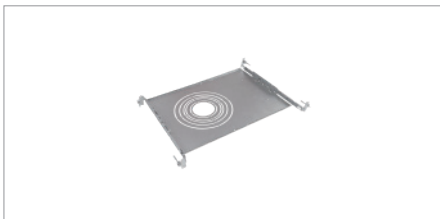
EXAMPLE: NOVA-20SPSW8

NOVA				
Series	Wattage	CCT	Voltage	OPTIONAL ORDERING GUIDE ³
NOVA	20SP Selectable 10W/15W/20W ¹ 40SP Selectable 27W/34W/40W ¹	SW Selectable 3000K ² /3500K /4000K	8 120-347V	Trim Shape Round Trim White Ring Metal Ring Rose Trim Square Trim Round Wall Wash Trim Square Wall Wash Trim

NOTE:

1. 20W and 40W are default setting.
2. 3000K is default setting.
3. Different trims need to be bought separately and field installed. More details are in the following accessory table.
Custom trim colors are available at an additional charge. Please contact the Customer Service for details.

ACCESSORIES (ORDERED AND SHIPPED SEPARATELY)



NOVA-3/8-R-RIP

New Construction.
Round Pre-mounting Plate.
Opening for 3" to 8".



NOVA-4/6-S-RIP

New Construction.
Square Pre-mounting Plate.
Opening for 4" to 6".



EBU-H08170

8W Emergency Battery.
Back-up for MAX.60W fixture¹.

NOTE:

1. Emergency battery back-up is for ambient temperatures of 32°F -95°F (0 °C -35°C).

ACCESSORIES (ORDERED AND SHIPPED SEPARATELY)**Round Trim****NOVA4-RT-WH**

Round Trim with White Ring
Reflector is Aluminum Natural
color Anodizing Treatment for
4" NOVA.

NOVA4-RT-MT

Round Trim with Metal Ring
Reflector is Aluminum Natural
Color Anodizing Treatment for
4" NOVA.

NOVA4-RT-RS

Rose Round Trim for 4" NOVA.

NOVA6-RT-WH

Round Trim with White Ring
Reflector is Aluminum Natural
Color Anodizing Treatment for
6" NOVA.

NOVA6-RT-MT

Round Trim with Metal Ring
Reflector is Aluminum Natural
Color Anodizing Treatment for
6" NOVA.

NOVA6-RT-RS

Rose Round Trim for 6" NOVA.

NOVA8-RT-WH

Round Trim with White Ring
Reflector is Aluminum Natural
Color Anodizing Treatment for
8" NOVA.

NOVA8-RT-MT

Round Trim with Metal Ring for
8" NOVA.

NOVA10-RT-WH

Round Trim with White Ring
for 10" NOVA.

Round Trim Wall Wash**NOVA4-RWWT-WH**

Round Wall Wash Trim with
White Ring for 4" NOVA. Tilt
10°-20°.

NOVA6-RWWT-WH

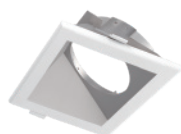
Round Wall Wash Trim with
White Ring for 6" NOVA. Tilt
10°-20°.

Square Trim**NOVA4-ST-WH**

Square Trim with White Ring
for 4" NOVA.

NOVA6-ST-WH

Square Trim with White Ring
for 6" NOVA.

Square Trim Wall Wash**NOVA4-SWWT-WH**

Square Wall Wash Trim with
White Ring for 4" NOVA. Tilt
10°-20°.

NOVA6-SWWT-WH

Square Wall Wash Trim with
White Ring for 6" NOVA. Tilt
10°-20°.

PERFORMANCE DATA

Lumen values are measured by third party certified laboratories performed in accordance with IESNA LM-79-08 as well as Lighting Facts listed.

Wattage	Lumen Output			Type
	High	Medium	Low	
Maximum 20W	20W, 75lm/W	15W, 78lm/W	10W, 80lm/W	IC
Maximum 40W	40W, 80lm/W	34W, 85lm/W	27W, 90lm/W	NON-IC

NOTE:

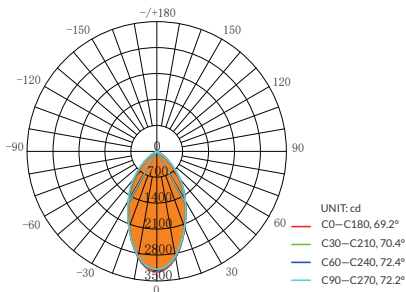
All efficacy is $\pm 5\%$ base on different CCT and Trims. Check the IES file to gain the accurate data.

PHOTOMETRY

All published luminaire photometric testing performed to IESNA LM-79-08 standards by a NVLAP certified laboratory. IESNA LM-79-08 specifies the entire luminaire as the source resulting in a fixture efficiency of 100%. Results may vary per actual order.

6" 40W Round Trim

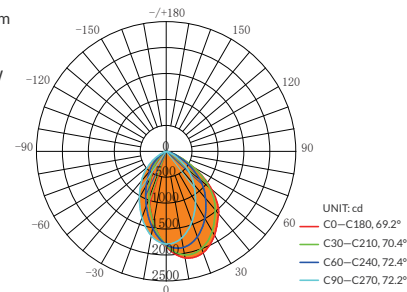
Lumens: 3328.0lm
 Watts: 40 W
 LPW: 83.2lm/W
 CCT: 4000K



AVERAGE BEAM ANGLE(50%): 57.4 DEG

6" 40W Round Wall Wash

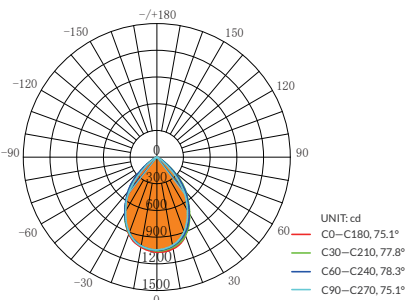
Lumens: 2949.1lm
 Watts: 40 W
 LPW: 73.73lm/W
 CCT: 3000K



AVERAGE BEAM ANGLE(50%): 71.0 DEG

6" 20W Square Trim

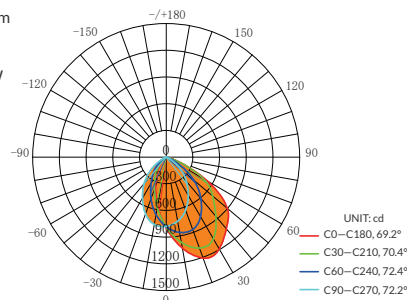
Lumens: 1515.4lm
 Watts: 20 W
 LPW: 75.77lm/W
 CCT: 4000K



AVERAGE BEAM ANGLE(50%): 76.6 DEG

6" 20W Square Wall Wash

Lumens: 1590.6lm
 Watts: 20 W
 LPW: 79.53lm/W
 CCT: 4000K



AVERAGE BEAM ANGLE(50%): 71.0 DEG

WARRANTY

5 years limited warranty.

Specifications subject to change without notice.