



The Selectable Flat Panel Features Back-lit design. Comes in 2ftx2ft, 2ftx4ft and 1ftx4ft configurations. Ideal for standard T-bar and narrow grid drop ceiling to replace the fluorescent troffer in offices, supermarkets, schools and other indoor applications.

TECHNICAL DATA

Wattage

2ftx2ft Selectable 25W/30W/40W

1ftx4ft Selectable 25W/30W/40W

2ftx4ft Selectable 30W/40W/50W

CCT Selectable 3500K/4000K/5000K

Driver 0-10V Dimming is standard

CRI 80

Input Voltage 120-347V, 50/60Hz

Projected Lifetime L70-100,000 Hours

Operating Temp. -4°F to 104°F (-20°C to 40°C)

Certifications cULus conforms to UL Std. 1598Cert. to CSA Std. C22.2 No.250.0

RoHS compliant

Suitable for dry locations

Type IC Rated, suitable for insulated ceilings

Tested in accordance with

ISO 14644-1

Suitable for ISO Class 1 to 5

Power Factor >0.9

Harmonic Distortion <20% at full load

FEATURES

- Wattage and CCT selectable.
- 120-347V available.
- No LGP, never yellowing.
- High efficacy up to 125lm/W, meet DLC 5.1 premium version.

DIMENSION

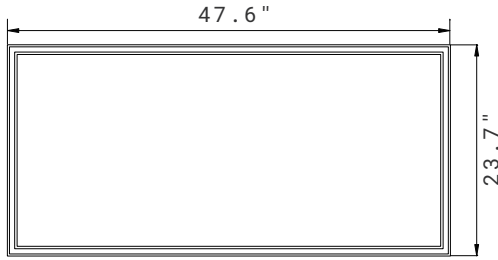
2'X4'

Length: 47.6"

Width: 23.7"

Depth: 1.5"

Max. Weight: 9lbs



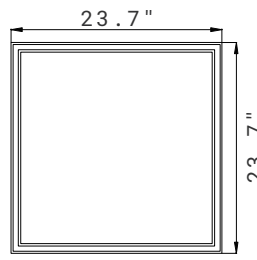
2'X2'

Length: 23.7"

Width: 23.7"

Depth: 1.5"

Max. Weight: 4.40lbs



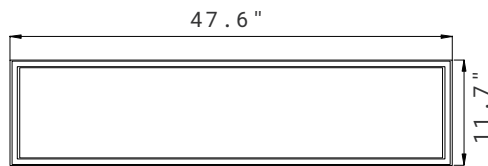
1'X4'

Length: 47.6"

Width: 11.7"

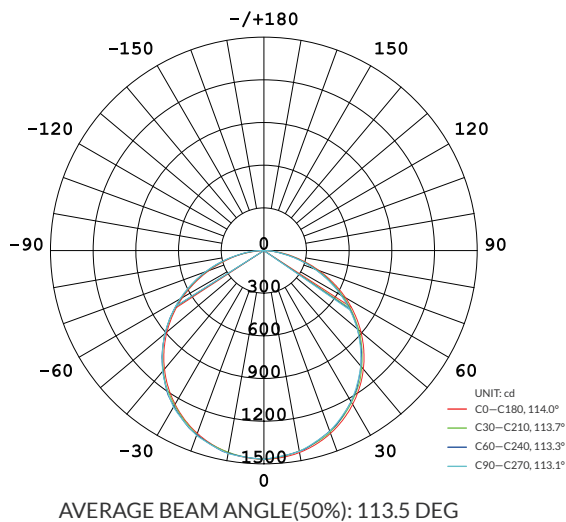
Depth: 1.5"

Max. Weight: 5lbs



PHOTOMETRY

All published luminaire photometric testing performed to IESNA LM-79-08 standards by a NVLAP certified laboratory. IESNA LM-79-08 specifies the entire luminaire as the source resulting in a fixture efficiency of 100%. Results may vary per actual order.



ORDERING INFORMATION

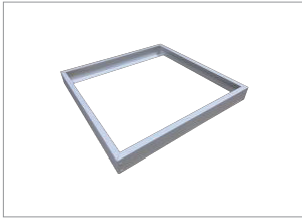
EXAMPLE: SBFLP24D-SP2-SW8-P

SBFLP							
Series	Size	Dimmable	Wattage	CCT	Voltage	LPW	Control
SBFLP	22 2'x2'	D 0-10V Driver	SP1 Selectable 25W/30W/40W ¹	SW Selectable White 3500K ³ /4000K /5000K	8 120-347V	P Premium	BLANK None
	14 1'x4'	D 0-10V Driver	SP1 Selectable 25W/30W/40W ¹				EBU Emergency Battery Back-up ⁴
	24 2'x4'	D 0-10V Driver	SP2 Selectable 30W/40W/50W ²				MSW Microwave Motion Sensor ⁵

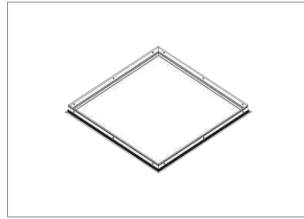
NOTE:

- 40W is default setting for 2ftX2ft and 1ftx4ft.
- 50W is default setting for 2ftx4ft.
- 3500K is default setting.
- Emergency back-up can only be used @120-277V.
- Microwave dimming sensor, for mounting height 20ft (6m) max. Dimming default setting is Bi-Level dim, 50% on vacancy and 100% on occupancy. Other dimming levels such as 10% or 30% can be set by the remote controller RC100. Daylight sensor is disable.
- White finish is standard. Custom color is available for a premium setup fee. Consult Customer Service for additional information.

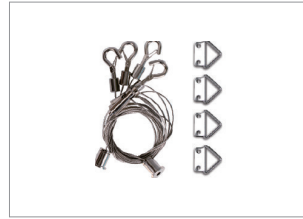
ACCESSORIES (ORDERED SEPARATELY)



90106K
2'x2' Surface Mount Kit.



90139K
1'x4' Flange Kit.



90579
FLP-SK
Suspension Kit for 2'x2', 1'x4'
and 2'x4' FLP (a set).



90535
AAL-RC-100
Remote Control for sensor.

90122K
1'x4' Surface Mount Kit.

90140K
2'x4' Flange Kit.

90123K
2'x4' Surface Mount Kit.

90141K
2'x2' Flange Kit.

PERFORMANCE DATA

Lumen values are measured by third party certified laboratories performed in accordance with IESNA LM-79-08 as well as Lighting Facts listed.

Lumen Output

Premium

Wattage	Size	Nominal Output	CCT	CRI	LPW
25W	2'x2'/1'x4'	3125lm	4000K	>80	125
30W	2'x2'/1'x4'/2'x4'	3750lm	4000K	>80	125
40W	2'x2'/1'x4'/2'x4'	5000lm	4000K	>80	125
50W	2'x4'	6250lm	4000K	>80	125

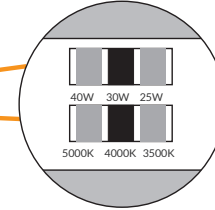
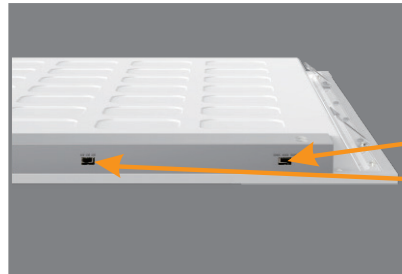
Lumen Ambient Temperature (LAT) Multipliers

Use these factors to determine relative lumen output for average ambient temperature from -4-104°F (-20-40°C).

Ambient		Multiplier
Celsius	Fahrenheit	
0	32	1.02
10	50	1.01
20	68	1.00
25	77	1.00
30	86	1.00
40	104	0.99

Note: Actual performance may differ as a result of end-user environment and application. All values are design or typical values, measured under laboratory conditions at 25°C. Specifications subject to change without notice.

FEATURES



MICROWAVE DIMMING SENSOR SETTING

Sensor data can be precisely set for each specific application by a remote controller which need to be bought separately.

Detection area

Detection area can be reduced by selecting the combination on the remote controller to fit precisely each application.

Optional Setting: 100%/75%/50%/25%

Default Setting: 100%

Hold time

Refers to the time period the lamp remains at 100% illumination after no motion detected.

Optional Setting: 10S/1min/10min/15min

Default Setting: 15min

Stand-by period

Refers to the time period the lamp remains at a low light level before it completely switches off in the long absence of people. When set to “ +∞ ” mode, the low light is maintained until motion is detected.

Optional Setting: 1min/30min/60min/+∞

Default Setting: +∞

Stand-by dimming level

The low light level you would like to have after the hold time in the long absence of people.

Optional Setting: 0%/10%/30%/50%

Default Setting: 50%

WARRANTY

5 year limited warranty.

Specifications subject to change without notice.