



This Magic LED Linear Fixture is a 1.5" wide, linear architectural luminaire with a slim and a discrete profile. Available in standard lengths of 2ft, 4ft, and 8ft that can be joined together in seamless runs of desired length. The Magic Linear is wattage and CCT selectable. A selection of pattern creating joiners are available for unlimited lighting pattern designs.

TECHNICAL DATA

Length/Wattage

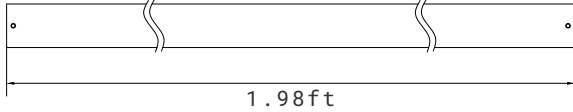
2ft	Selectable 10W/15W/20W
4ft	Selectable 20W/30W/40W
8ft	Selectable 40W/60W/80W
CRI	80Ra
CCT	Selectable 3000K/3500K/4000K
Driver	1-10V Dimming
Compatible Dimmer	LUTRON: DDTV LEVITON: IP710
Input Voltage	120-277V, 50/60Hz
Operating Temp.	-4°F to 104°F (-20°C to 40°C)
Certifications	cULus conforms to UL Std. 1598 Cert. to CSA Std. C22.2 No.250.0 Suitable for damp locations RoHS compliant
Power Factor	>0.9 at full load
Harmonic Distortion	<20% at full load
Projected Lifetime	L70 - 100,000 Hours

FEATURES

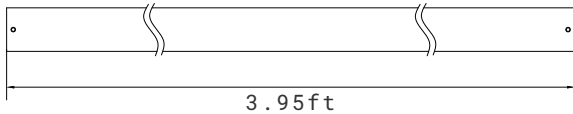
- Comes in lengths of 2ft, 4ft, and 8ft.
- 3000K, 3500K and 4000K selectable.
- Wattage selectable.
- Available with several lit joiner accessories for unlimited lighting pattern design.
- Surface and pendant mount.
- Microwave sensor and EBU are available.

SPECIFICATION

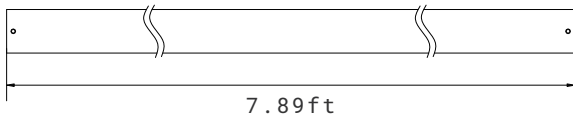
2ft



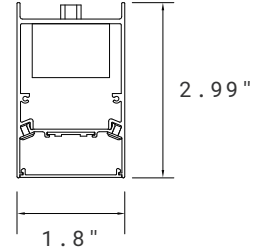
4ft



8ft



Side View



PERFORMANCE DATA

Lumen values are measured by third party certified laboratories performed in accordance with IESNA LM-79-08 as well as Lighting Facts listed.

Finish	Length	Wattage Selectable	Lumen (25% Up/ 75% Down)			Lumen (100% Down)			Efficacy
			3000K	3500K	4000K	3000K	3500K	4000K	
White	2ft	10W/15W/20W	1120~2240lm	1220~2440lm	1170~2340lm	1050~2100lm	1150~2300lm	1100~2200lm	580~ 1170lm/ft
	4ft	20W/30W/40W	2240~4480lm	2440~4880lm	2340~4680lm	2100~4200lm	2300~4600lm	2200~4400lm	
	8ft	40W/60W/80W	4480~8960lm	4880~9760lm	4680~9360lm	4200~8400lm	4600~9200lm	4400~8800lm	
Black	2ft	10W/15W/20W	920~1840lm	1020~2040lm	970~1940lm	850~1700lm	950~1900lm	900~1800lm	480~ 970lm/ft
	4ft	20W/30W/40W	1840~3680lm	2040~4080lm	1940~3880lm	1700~3400lm	1900~3800lm	1800~3600lm	
	8ft	40W/60W/80W	3680~7360lm	4080~8160lm	3880~7760lm	3400~6800lm	3800~7600lm	3600~7200lm	

NOTE:

1. Please check the IES file to gain the accurate data.

ORDERING INFORMATION

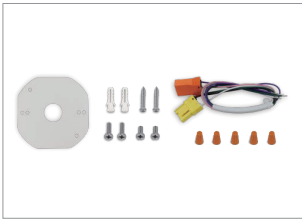
EXAMPLE: MAG1218-SW1-PSM-SD-FDL

MAG					
1. Series	2. Length	3. Width	4. Driver	5. CCT	6. Voltage
MAG	06 2ft 12 4ft 24 8ft Option¹ Desired System Length ¹	18 1.8 Inch	BLANK Integral 1-10V Dimming	SW² Selectable 3000K 3500K 4000K ²	1 120-277V
	7. Mounting Options	8. Light Distribution	9. Lens Options	10. Finish	
	PSM Suspended and Surface Mounted WM Wall Mounted Please refer to the following accessory table to choose the right mounting kits.	SD³ 2 Lighting Distributions Selectable 75% Down, 25% Up 100% Downlight ³	FDL⁴ Flush Diffused Lens ⁴	BLANK White BK Black	

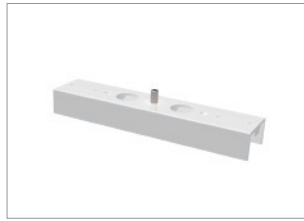
NOTE:

- Individual fixtures, runs and configurations are supplied in nominal lengths to ensure full, even, illumination. If desired runs and configurations are needed, please tell us the details in advance. Then we can prepare the middle run and end run in factory for easy installation, or end user need to modify the standard individual fixtures into middle run and end run.
- The default CCT setting is 4000K.
- Default setting is 100% downlight.
- Please specify the Continuous Roll-Out Lens from the accessory table below for joined lengths exceeding 8ft.

ACCESSORIES (ORDERED SEPARATELY AND FIELD INSTALLED)



MAG-SMK
Surface and Wall Mount
Kits.



MAG18-LINE
Line Shape Mount Bracket
(standard).



MAG18-ROL¹
Continuous Roll-Out Lens
(43ft).¹



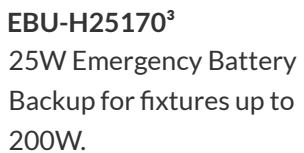
MAG-MSW-PM/SM²
Microwave Motion Sensor
Kit for Pendant and
Surface Mount.



ACGP
Aircraft Cable Gripper
(a pair)
Suitable for Ø 0.06"-0.08"
(1.5mm-2mm)
Aircraft Cable including
two pieces.



EBU-H08170³
8W Emergency Battery
Backup for fixtures up to
60W.



EBU-H25170³
25W Emergency Battery
Backup for fixtures up to
200W.



RC-100
Remote Control for
Microwave Motion Sensor.

NOTE:

1. For joined lengths exceeding 8ft, only the Continuous Roll-Out Lens may be used.
2. Microwave dimming sensor, for mounting height 20ft (6m) max. Dimming default setting is Bi-Level dim and dimming to 50%. Besides, daylight sensor default setting is disable. If need other dimming levels such as 10% or 30%, ON/OFF function and daylight sensor function, please consult with customer service in advance.
3. Emergency battery backup operates within ambient temperatures of 32°F to 95°F (0°C to 35°C).

ACCESSORIES (ORDERED SEPARATELY AND FIELD INSTALLED)



Drop Ceiling Suspension Mount List¹

MAG-PMK3-5FT

Aircraft Cable Pendant Mount Kits for Drop Ceiling, with 5ft aircraft cable and 5ft power cord (One set per fixture).

MAG-PMK3-12FT

Aircraft Cable Pendant Mount Kits for Drop Ceiling, with 12ft aircraft cable and 12ft power cord (One set per fixture).

NOTE:

1. Suitable for 9/16" and 15/16" Flat Ceiling. If for 9/16" Slot Ceiling please contact Customer Service.



Dry Ceiling Suspension Mount List.

MAG-PMK1-5FT

Aircraft Cable Pendant Mount Kits for Dry Ceiling, with 5ft aircraft cable and 5ft power cord (One set per fixture).

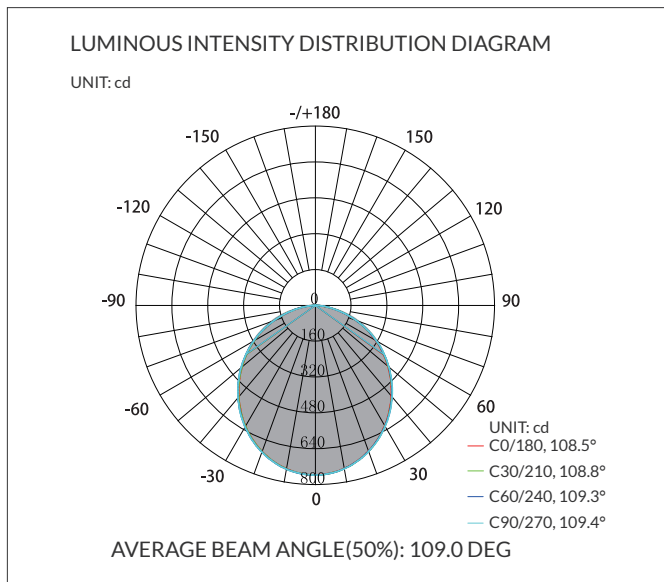
MAG-PMK1-12FT

Aircraft Cable Pendant Mount Kits for Dry Ceiling, with 12ft aircraft cable and 12ft power cord (One set per fixture).

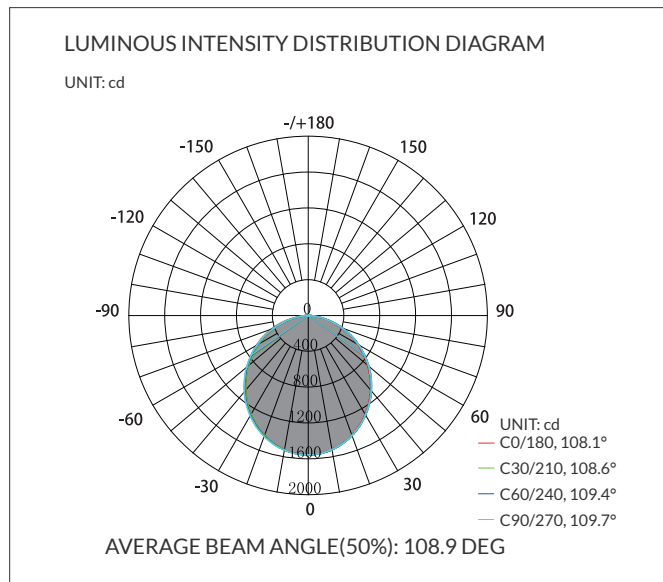
PHOTOMETRY

All published luminaire photometric testing performed to IESNA LM-79-08 standards by a NVLAP certified laboratory. IESNA LM-79-08 specifies the entire luminaire as the source resulting in a fixture efficiency of 100%. Results may vary per actual order.

20W, Distribution Diagram



40W, Distribution Diagram



MICROWAVE DIMMING SENSOR SETTING (120-277V)

By selecting the combination on the DIP switch, sensor data can be precisely set for each specific application. The sensor setting also can be done by a remote control (RC-100) which need to be bought separately.

	1	2	
I	↓	↓	20%
II	↓	↑	50%
III	↑	↓	75%
IV	↑	↑	100%

Sensitivity

Sensitivity can be reduced by selecting the combination on the DIP switches to fit precisely each application.

Default Setting: 100%

	3	4	
I	↓	↓	10s
II	↓	↑	1min
III	↑	↓	5mins
IV	↑	↑	15mins

Hold time

Refers to the time period the lamp remains at 100% illumination after no motion detected.

Default Setting: 15mins

	5	6	
I	↓	↓	☀
II	↓	↑	10 lux
III	↑	↓	30 lux
IV	↑	↑	50 lux

Daylight sensor

The sensor can be set to only allow the lamp to illuminate below a defined ambient brightness threshold.

Default Setting: ☀ (Disable)

	7	8	
I	↓	↓	0%
II	↓	↑	10%
III	↑	↓	30%
IV	↑	↑	50%

Stand-by dimming level

The low light level you would like to have after the hold time in the long absence of people.

Default Setting: 50%

	9	10	
I	↓	↓	+∞
II	↓	↑	1min
III	↑	↓	30mins
IV	↑	↑	60mins

Stand-by time

Refers to the time period the lamp remains at a low light level before it completely switches off in the long absence of people. When set to “ +∞ ” mode, the low light is maintained until motion is detected.

Default Setting: 30mins

WARRANTY

5 years limited warranty.

Specifications subject to change without notice.