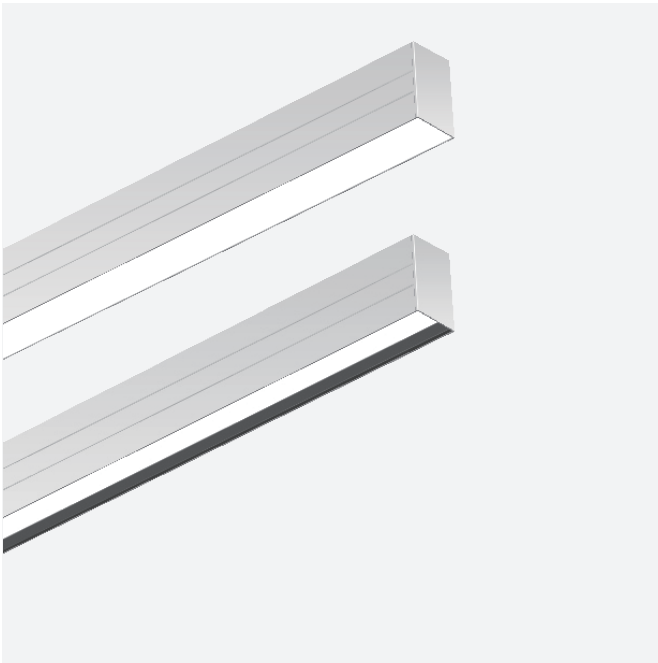


2" MAGIC DIRECT LINEAR LIGHT

Recessed / Suspended / Surface Mounted



The 2" Magic Linear Light is available in recessed mount. It is available in 2" width with 2ft, 3ft, 4ft and 8ft lengths options, simply provide linear, powerful lighting to any atmosphere. This linear lighting features a streamlined linear form factor designed for maximum versatility. With their superior flexibility by wattage selectable and selectable CCT, Magic Linear creates a balance between aesthetics, visual comfort and lighting performance, designed to meet the most demanding lighting challenges.

TECHNICAL DATA

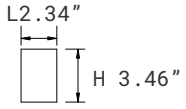
Length	2ft, 3ft, 4ft, 8ft
CRI	80
CCT	Selectable 3000K/3500K/4000K
Dimming	1-10V Dimming
Compatible Dimmer	LUTRON: DVSTV LEVITON: IP710
Input Voltage	120-277V, 50/60Hz
Operating Temp.	-4°F to 104°F (-20°C to 40°C)
Certifications	cULus conforms to UL Std. 1598 Cert. to CSA Std. C22.2 No.250.0 Suitable for damp locations RoHS compliant
Power Factor	>0.9 at full load
Harmonic Distortion	<20% at full load
Projected Lifetime	L70 - 100,000 Hours

FEATURES

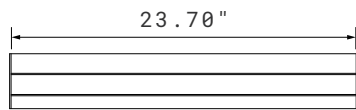
- **Dimensions & Configuration:** Available in 2', 3', 4', and 8' lengths with multiple lit joiner accessories for unlimited lighting pattern design.
- **Versatile Installation:** Trimless recessed, suspended and surface mounted. Compatible with T-grid or dry ceiling.
- **Performance & Control:** CCT and wattage selectable (up to 1000lm/ft) with optional microwave sensor and EBU.

SPECIFICATION

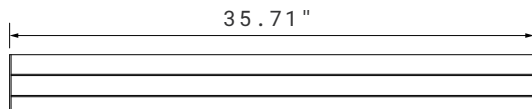
Side View



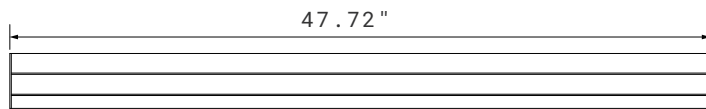
2ft



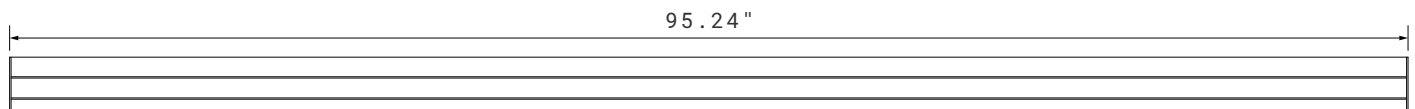
3ft



4ft



8ft



2" MAGIC DIRECT LINEAR LIGHT

Recessed / Suspended / Surface Mounted

ORDERING INFORMATION

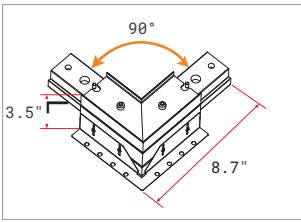
EXAMPLE: MAG1223-SW1-RM-D-FDL

MAG					
1. Series	2. Length	3. Width	4. Driver	5. CCT	6. Voltage
MAG Magic	06 2ft 09 3ft 12 4ft 24 8ft Option ¹ <i>Desired System Length</i>	23 2.3 Inch	BLANK Integral	SW ² Selectable 3000K 3500K ² 4000K	1 120-277V
	7. Mounting Options	8. Light Distribution	9. Lens Options	10. Finish	
	RSM ³ Recessed Suspended Surface Mounted	D 100% Downlight	FDL ⁴ Flush Diffused Lens RGL ^{4&5} Regressed Lens	BLANK White BK Black	

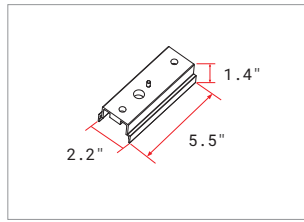
NOTE:

- Individual fixtures, Runs and Configurations are supplied in nominal lengths to ensure full, even, illumination. If desired runs and configurations are needed, please tell us the details in advance. Then we can prepare the middle run and end run in factory for easy installation, or end user need to modify the standard individual fixtures into middle run and end run.
- Default setting is 3500K.
- Please refer to the following accessory table to choose the right mounting kits.
- FDL is standard. RGL will ask MOQ and long lead time.
- Continuous run mount is not available for regressed lens.
- If the joined length exceeds 8ft, only continuous Roll-Out Lens can be used.

ACCESSORIES (ORDERED SEPARATELY AND FIELD INSTALLED)



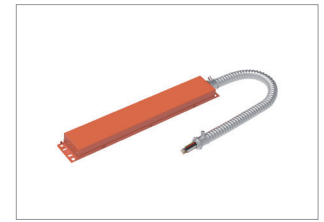
MAG23-RSM-L
 L Shape Mount Bracket
 for Recessed, Suspended
 and Surface Mount.



MAG23-RSM-LINE
 Line Shape Mount Bracket
 for Recessed, Suspended
 and Surface Mount.



MAG23-ROL¹
 Continuous Roll-Out
 Lens (42').



AAL-EBU-AC08D-YYY²
 Remote 8W LED
 Emergency Battery
 Back-up 120-347VAC.

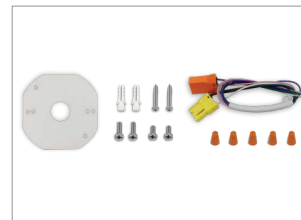
AAL-EBU-AC25D-YYY²
 Remote 25W LED
 Emergency Battery
 Back-up 120-347VAC.



MAG-MSW-PM/SM
 Microwave Motion Sensor
 Kit for Pendant Mounting.



AAL-RC-100
 Remote Control for
 Microwave Motion Sensor.



For Surface Mount
MAG-SMK
 Surface and Wall Mount Kits.



ACGP
 Aircraft Cable Gripper
 (a pair). Suitable for
 Ø0.06"-0.08" (1.5mm-2
 mm) aircraft cable
 including two pieces.

NOTE:

1. For joined lengths exceeding 8ft, only the Continuous Roll-Out Lens may be used.
2. The 8W EBU supports up to 60W total lighting load. The 25W EBU supports up to 150W total lighting load. The dimming control wire must be connected. The EBU is Title 20 compliant. Emergency battery backup operates within ambient temperatures of 32°F to 95°F (0°C to 35°C).

ACCESSORIES (ORDERED SEPARATELY AND FIELD INSTALLED)



Drop Ceiling Suspension Mount List

MAG-PMK3-5FT¹

Aircraft Cable Pendant Mount Kits for Drop Ceiling, with 5ft aircraft cable and 5ft power cord (One set per fixture).

MAG-PMK3-12FT¹

Aircraft Cable Pendant Mount Kits for Drop Ceiling, with 12ft aircraft cable and 12ft power cord (One set per fixture).

NOTE:

1. Suitable for 9/16" and 15/16" Flat Ceiling.
If for 9/16" slot ceiling please contact Customer Service.



Dry Ceiling Suspension Mount List.

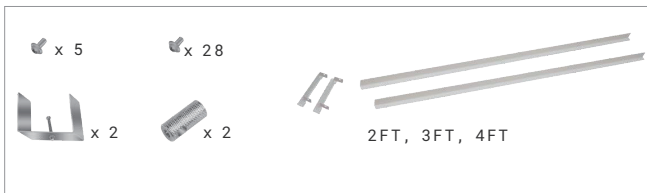
MAG-PMK1-5FT

Aircraft Cable Pendant Mount Kits for Dry Ceiling, with 5ft aircraft cable and 5ft power cord (One set per fixture).

MAG-PMK1-12FT

Aircraft Cable Pendant Mount Kits for Dry Ceiling, with 12ft aircraft cable and 12ft power cord (One set per fixture).

ACCESSORIES (ORDERED SEPARATELY AND FIELD INSTALLED)



Recessed in Dry Ceiling Trim (recessed with bracket)

MAG0623-RMK-DY-TM-BKT

Trim Recessed with bracket 2ft, 2" Linear.

MAG0923-RMK-DY-TM-BKT

Trim Recessed with bracket 3ft, 2" Linear.

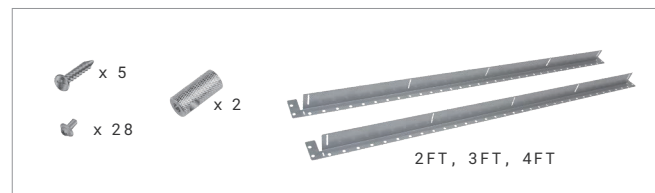
MAG1223-RMK-DY-TM-BKT

Trim Recessed with bracket 4ft, 2" Linear.

NOTE:

If for 8ft, two sets of

MAG1223-RMK-DY-TM-BKT will be needed.



Recessed in Dry Ceiling Trimless

MAG0623/38-RMK-DY-TMS

Trimless Recessed 2ft, 2"/ 4" Linear.

MAG0923/38-RMK-DY-TMS

Trimless Recessed 3ft, 2"/ 4" Linear.

MAG1223/38-RMK-DY-TMS

Trimless Recessed with bracket 4ft, 2"/ 4" Linear.

NOTE:

If for 8ft, two sets of

MAG1223/38-RMK-DY-TMS will be needed.



Recessed in Dry or Drop Ceiling Trim (recessed with Pendant Stem)

MAG0623-RMK-DY/DP-TM-STEM

Trim Recessed with pendant stem 2ft, 2" Linear.

MAG0923-RMK-DY/DP-TM-STEM

Trim Recessed with pendant stem 3ft, 2" Linear.

MAG1223-RMK-DY/DP-TM-STEM

Trim Recessed with pendant stem 4ft, 2" Linear.

NOTE:

If for 8ft, two sets of

MAG1223-RMK-DY/DP-TM-STEM will be needed.

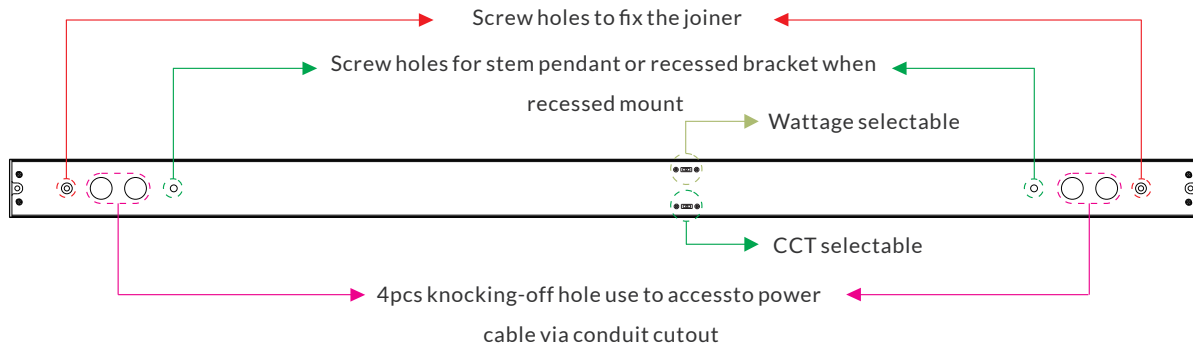


Recessed in Drop Ceiling Trimless (T-grid Hooks)

MAG23/38-RMK-DP-TMS

T-grid Recessed Kits for 2"/ 4" Magic Linear.

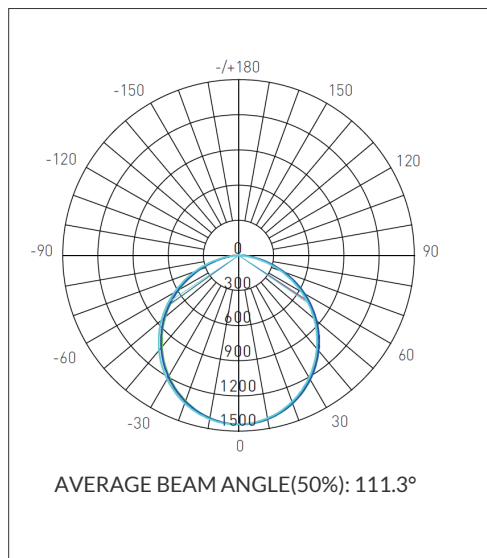
MOUNTING LOCATION



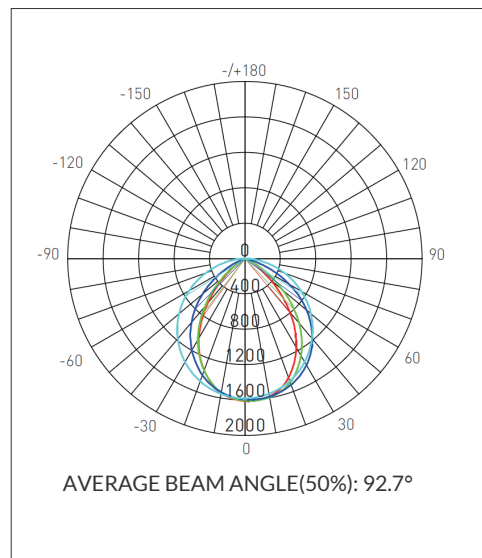
PHOTOMETRY

All published luminaire photometric testing performed to IESNA LM-79-08 standards by a NVLAP certified laboratory. IESNA LM-79-08 specifies the entire luminaire as the source resulting in a fixture efficiency of 100%. Results may vary per actual order.

With Flush Diffused Lens



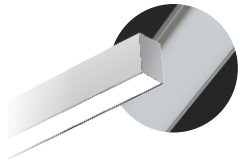
With Recessed Lens



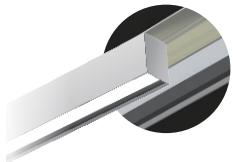
PERFORMANCE DATA

Lumen values are measured by third party certified laboratories performed in accordance with IESNA LM-79-08 as well as Lighting Facts listed.

Flush Diffused Lens



Regressed Lens



Optics	Width	Lumen Package			Wattage
		High	Medium	Low	
Flat Lens	2.3"	1000lm/ft, 10W/ft	750lm/ft, 7.5W/ft	500lm/ft, 5W/ft	10W/15W/20W@2FT 15W/20W/30W@3FT 20W/30W/40W@4FT 40W/60W/80W@8FT
Regressed Lens	2.3"	800lm/ft, 10W/ft	600lm/ft, 7.5W/ft	400lm/ft, 5W/ft	

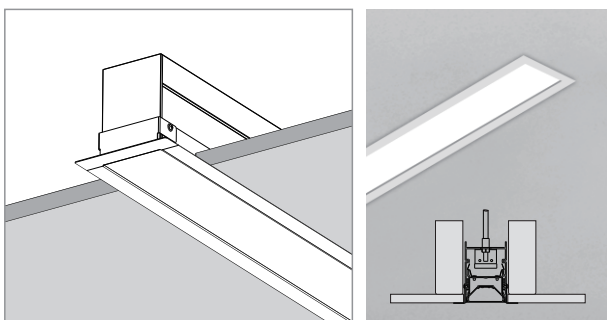
NOTE

1. Above are subject to 3500K.
2. All efficacy is $\pm 5\%$ base on different CCT and wattage. Check the IES file to gain the accurate data .

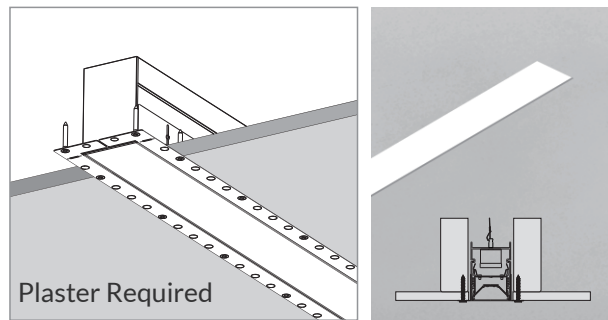
RECESSED MOUNTING

Recessed In Dry Ceiling

Trim (Recessed with pendant stem)



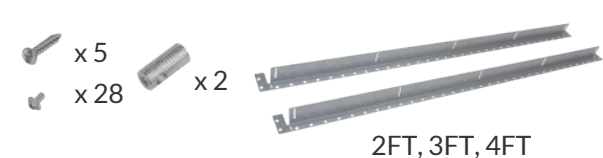
Trimless



Mounting Kits



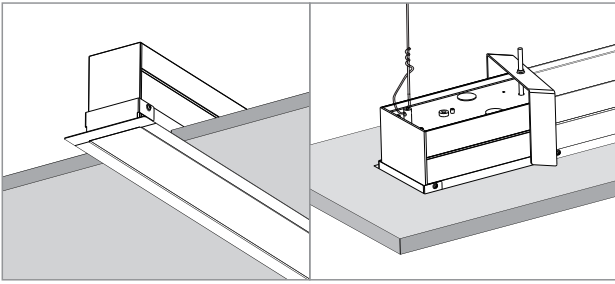
Mounting Kits



2" MAGIC DIRECT LINEAR LIGHT

Recessed / Suspended / Surface Mounted

Trim (Recessed Wit Brackets)

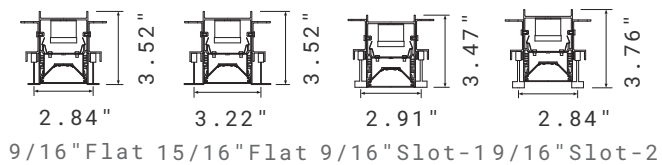
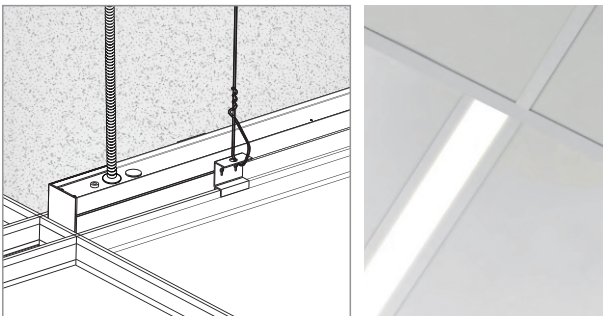


Mounting Kits

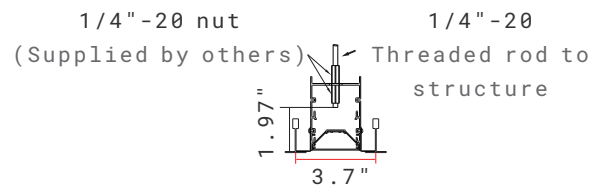
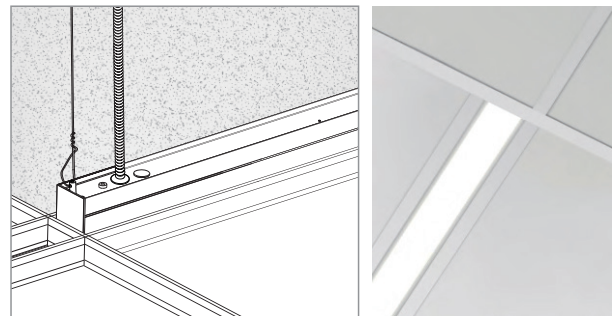


Recessed In Grid Ceiling

T-Grid Hooks



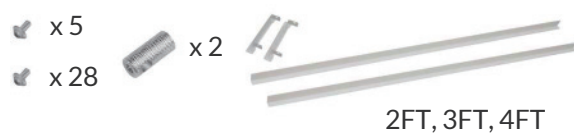
Flanged Trim



Mounting Kits



Mounting Kits



WARRANTY

5 years limited warranty.
Specifications subject to change without notice.